

STJ VORTAC 115.5 Chan 102	APP CRS 348°	Rwy Idg TDZE Apt Elev	8061 815 827
---	------------------------	-----------------------------	---

VOR or TACAN RWY 35

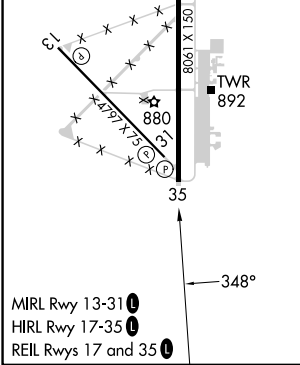
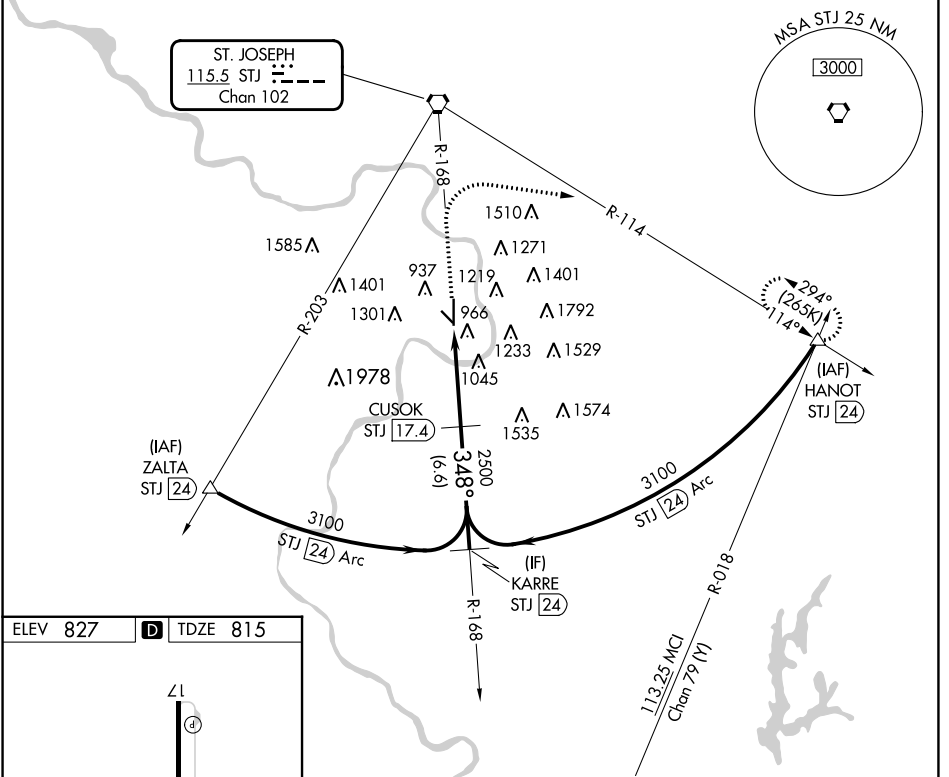
ROSECRANS MEML (STJ)

DME required.

MISSED APPROACH: Climb to 2700 then climbing right turn to 3100 on heading 090° and STJ VORTAC R-114 to HANOT/24 DME and hold.

ASR/PAR

ATIS 125.05	ST. JOSEPH APP CON * 120.35 360.8	ST. JOSEPH TOWER * 126.9 (CTAF) 239.0	GND CON 121.9	UNICOM 122.95
-----------------------	---	---	-------------------------	-------------------------



2700	3100	STJ R-114	HANOT	CUSOK STJ 17.4	KARRE STJ 24
↑	hdg R-114		△		
		STJ 13.5		3100	
		STJ 11.9	2500	348°	
		1.6	3.9 NM	6.6 NM	
≤ 2.79°	TCH 64				
CATEGORY	A	B	C	D	E
S-35	1360/55	545 (600-1)	1360-1½ 545 (600-1½)	1360-1¾ 545 (600-1¾)	1360-2 545 (600-2)
CIRCLING	1400-1 573 (600-1)	1420-1 593 (600-1)	1620-2¼ 793 (800-2¼)	1640-2¾ 813 (900-2¾)	1760-3 933 (1000-3)

NC-3, 26 DEC 2024 to 23 JAN 2025

NC-3, 26 DEC 2024 to 23 JAN 2025