

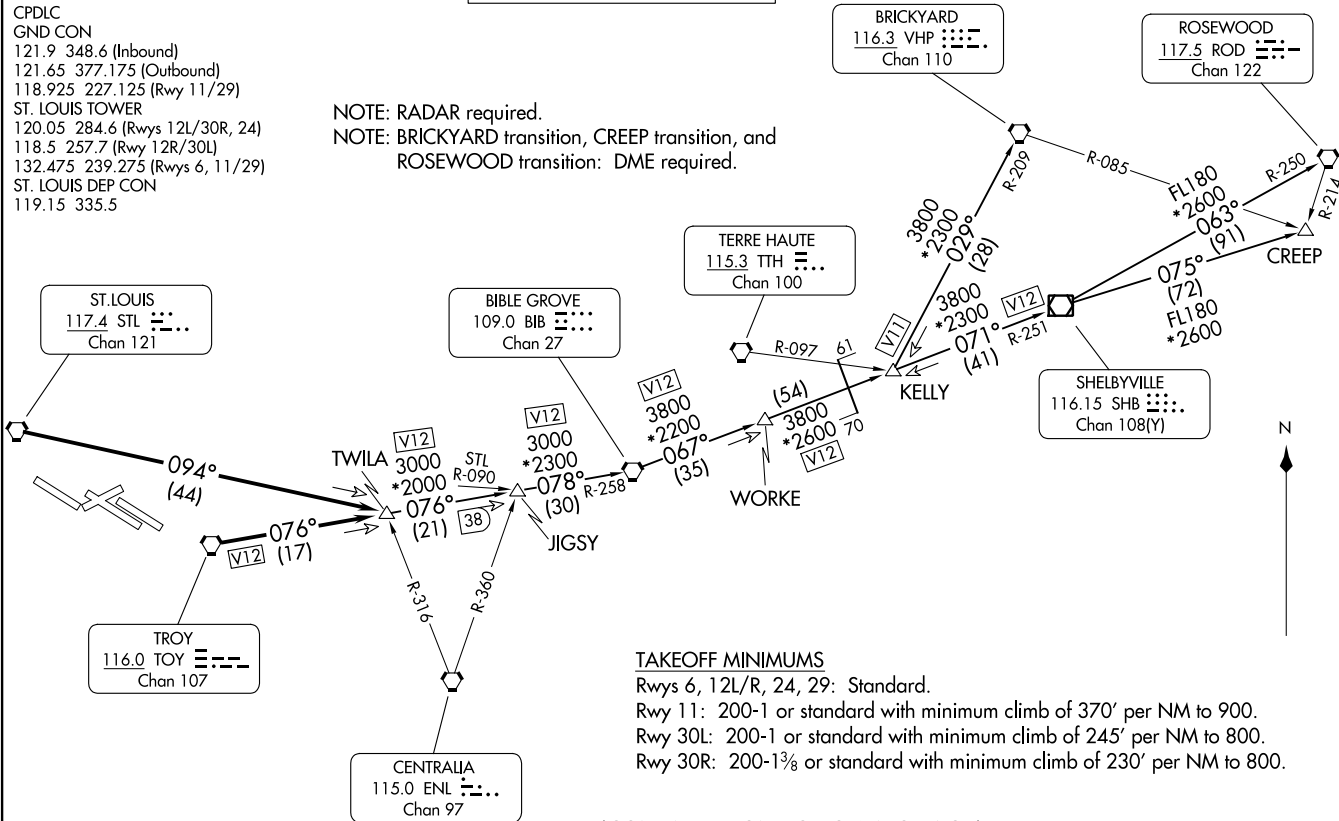
GATEWAY ONE DEPARTURE  
(GATWY1.TWILA) 08NOV18

ST. LOUIS, MISSOURI  
ST. LOUIS LAMBERT INTL (STL)

D-ATIS  
125.025 379.925  
CLNC DEL  
119.5 363.1  
CPDLC  
GND CON  
121.9 348.6 (Inbound)  
121.65 377.175 (Outbound)  
118.925 227.125 (Rwy 11/29)  
ST. LOUIS TOWER  
120.05 284.6 (Rwys 12L/30R, 24)  
118.5 257.7 (Rwy 12R/30L)  
132.475 239.275 (Rwys 6, 11/29)  
ST. LOUIS DEP CON  
119.15 335.5

**TOP ALTITUDE:  
(JETS) 5000/  
(PROPS) 3000**

NOTE: RADAR required.  
NOTE: BRICKYARD transition, CREEP transition, and ROSEWOOD transition: DME required.



TAKEOFF MINIMUMS

Rwys 6, 12L/R, 24, 29: Standard.  
Rwy 11: 200-1 or standard with minimum climb of 370' per NM to 900.  
Rwy 30L: 200-1 or standard with minimum climb of 245' per NM to 800.  
Rwy 30R: 200-1½ or standard with minimum climb of 230' per NM to 800.

(CONTINUED ON FOLLOWING PAGE)

NOTE: Chart not to scale.

(GATWY1.TWILA) 24025  
GATEWAY ONE DEPARTURE

AL-360 (FAA)

ST. LOUIS LAMBERT INTL (STL)  
ST. LOUIS, MISSOURI



DEPARTURE ROUTE DESCRIPTION

Climb on assigned heading for vector to appropriate route.

JETS: Maintain 5000 or assigned altitude, thence. . . .

PROPS: Maintain 3000 or assigned altitude, thence. . . .

. . . .from over TOY VORTAC on TOY R-076 or over STL VORTAC on STL R-094 to TWILA INT. Then on (transition), expect clearance to filed altitude 10 minutes after departure.

BIBLE GROVE TRANSITION (GATWY1.BIB): From over TWILA on TOY R-076 to JIGSY, then on BIB R-258 to BIB VORTAC.

BRICKYARD TRANSITION (GATWY1.VHP): From over TWILA on TOY R-076 to JIGSY, then on BIB R-258 to BIB VORTAC, then on BIB R-067 to WORKE, then on BIB R-067 and SHB R-251 to KELLY, then on VHP R-209 to VHP VORTAC.

CREEP TRANSITION (GATWY1.CREEP): From over TWILA on TOY R-076 to JIGSY, then on BIB R-258 to BIB VORTAC, then on BIB R-067 to WORKE, then on BIB R-067 and SHB R-251 to KELLY, then on SHB R-251 to SHB VOR/DME, then on SHB R-075 to CREEP.

JIGSY TRANSITION (GATWY1.JIGSY): From over TWILA on TOY R-076 to JIGSY.

ROSEWOOD TRANSITION (GATWY1.ROD): From over TWILA on TOY R-076 to JIGSY, then on BIB R-258 to BIB VORTAC, then on BIB R-067 to WORKE, then on BIB R-067 and SHB R-251 to KELLY, then on SHB R-251 to SHB VOR/DME, then on SHB R-063 and ROD R-250 to ROD VORTAC.

NC-3, 26 DEC 2024 to 23 JAN 2025

NC-3, 26 DEC 2024 to 23 JAN 2025