

LOC/DME I-OGZ 111.95 Chan 56(Y)	APP CRS 123°	Rwy ldg TDZE Apt Elev	9000 618 618
--	------------------------	-----------------------------	---

ILS or LOC RWY 11

ST LOUIS LAMBERT INTL (STL)

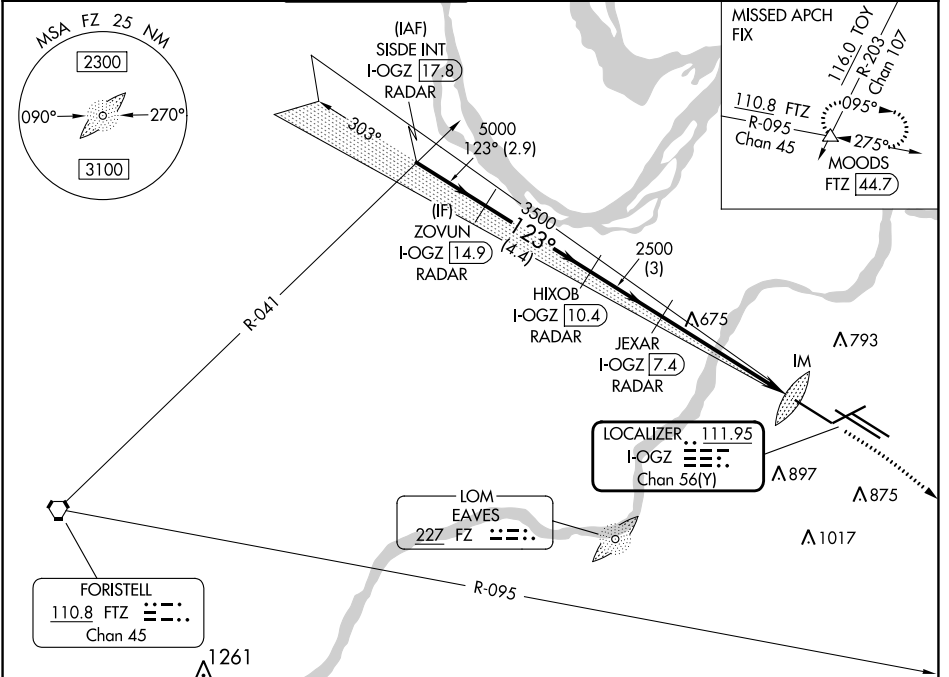
RADAR required for procedure entry. DME or RADAR required.

Simultaneous approach authorized with Rwy 12R/L. Disregard OM signal associated with ILS to Rwy 12R. For inop ALS, increase S-ILS Cat E visibility to RVR 4000, and S-LOC Cat C/D/E visibility to RVR 5500.



MISSED APPROACH: Climb to 1060 then climbing right turn to 3000 on heading 130° and FTZ R-095 to MOODS INT/FTZ 44.7 DME and hold.

D-ATIS 125.025 379.925	ST. LOUIS APP CON 132.125 360.6	ST. LOUIS TOWER 132.475 239.275	GND CON 121.9 348.6 (Inbound) 121.65 377.175 (Outbound) 118.925 227.125 (Rwy 11/29)	CLNC DEL 119.5 363.1	CPDLC
--	---	---	---	--------------------------------	-------



VGSIs and ILS glidepath not coincident (VGS Angle 3.00/TCH 67).					1060	3000	FTZ R-095	MOODS	
SISDE INT I-OGZ [17.8] RADAR	ZOVUN I-OGZ [14.9] RADAR	HIXOB I-OGZ [10.4] RADAR	JEXAR I-OGZ [7.4] RADAR	* I-OGZ [2.7]	I-OGZ [1.8]	*LOC only			
5000	5000	3500	2500	2500	IM				
GS 3.00° TCH 55									
	2.9 NM	4.4 NM	3 NM	4.6 NM	0.9 NM	0.1			
CATEGORY	A	B	C	D	E				
S-ILS 11	818/18				200 (200-½)				
S-LOC 11	980/24	362 (400-½)	980/35		362 (400-¾)				

ELEV 618 **D** TDZE 618

Rwy 6-24 7603 X 150
Rwy 11-29 9000 X 150
Rwy 12L-30R 9013 X 150
Rwy 12R-30L 11020 X 150

HIRL all Rwy's
TDZ/CL Rwy's 11, 12L, 12R, 29, and 30R
FAF to MAP 5.6 NM

Knots	60	90	120	150	180
Min:Sec	5:36	3:44	2:48	2:14	1:52

NC-3, 26 DEC 2024 to 23 JAN 2025

NC-3, 26 DEC 2024 to 23 JAN 2025