

LOC/DME I-RQN 111.95 Chan 56(Y)	APP CRS 303°	Rwy Idg TDZE Apt Elev 9000 580 618
---	------------------------	--

ILS or LOC RWY 29

ST LOUIS LAMBERT INTL (STL)

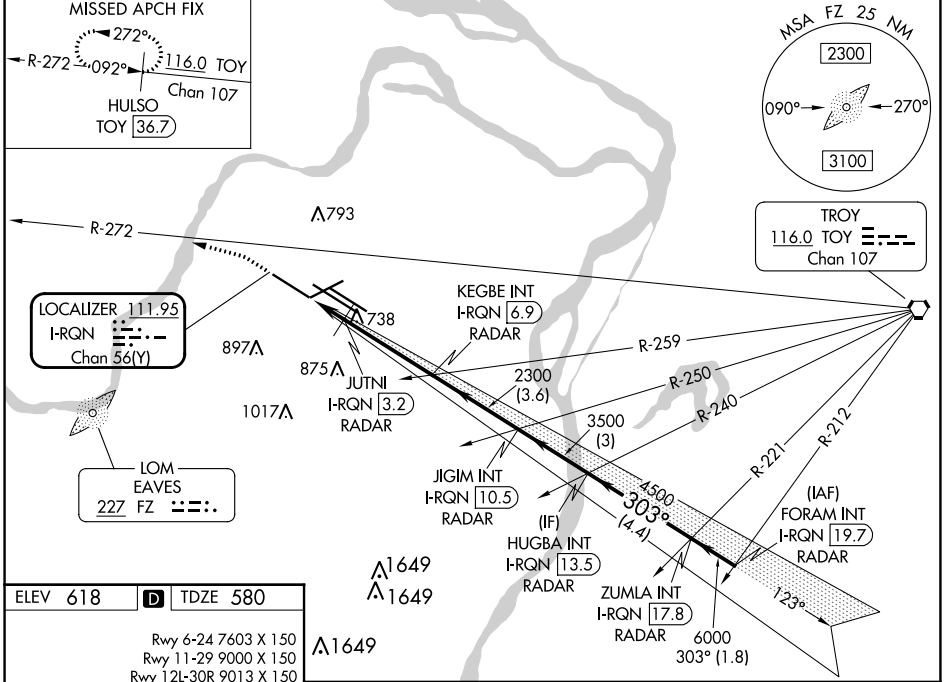
RADAR required for procedure entry. DME or RADAR required.

⚠ Simultaneous approach authorized with Rwy 30R/L. Autopilot coupled approach NA. Rwy 29 helicopter visibility reduction below RVR 4000 NA. For inop ALS, increase S-ILS Cat E visibility to RVR 4000, increase S-LOC Cats A/B visibility to RVR 5500, and Cat C/D/E to RVR 6000.

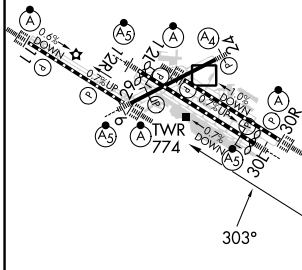
ALSF-2

MISSED APPROACH: Climb to 1040 then climbing left turn to 3000 on heading 286° and on TOY VORTAC R-272 to HULSO/TOY 36.7 DME and hold.

D-ATIS 125.025 379.925	ST. LOUIS APP CON 132.125 360.6	ST. LOUIS TOWER 132.475 239.275	GND CON 121.9 348.6 (Inbound) 121.65 377.175 (Outbound) 118.925 227.125 (Rwy 11/29)	CLNC DEL 119.5 363.1	CPDLC
--	---	---	---	--------------------------------	-------



ELEV 618	D	TDZE 580
Rwy 6-24 7603 X 150		
Rwy 11-29 9000 X 150		
Rwy 12L-30R 9013 X 150		
Rwy 12R-30L 11020 X 150		



CATEGORY	A	B	C	D	E
S-ILS 29		780/18	200 (200-½)		
S-LOC 29		980/40	400 (400-¾)		

NC-3, 26 DEC 2024 to 23 JAN 2025

NC-3, 26 DEC 2024 to 23 JAN 2025