

LOC/DME I-JAK <b>110.3</b> Chan <b>40</b>	APP CRS <b>064°</b>	Rwy Idg <b>7323</b> TDZE <b>551</b> Apt Elev <b>618</b>
-------------------------------------------------	------------------------	---------------------------------------------------------------

# ILS or LOC RWY 6

ST LOUIS LAMBERT INTL (STL)

DME or RADAR required. DME or RADAR required for procedure entry.



MISSED APPROACH: Climb to 2200 then climbing left turn to 3000 direct STL VORTAC and hold, continue climb-in-hold to 3000.

For inop ALS, increase S-ILS 6 Cat E visibility to RVR 4000 and S-LOC 6 Cat C/D/E visibility to 1/2 SM.

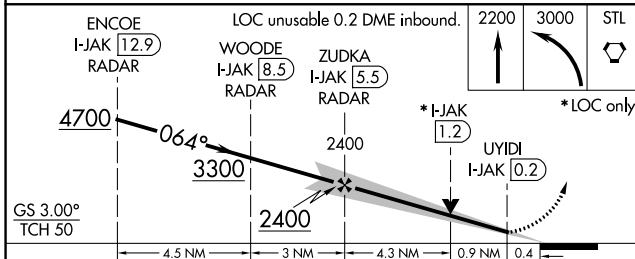
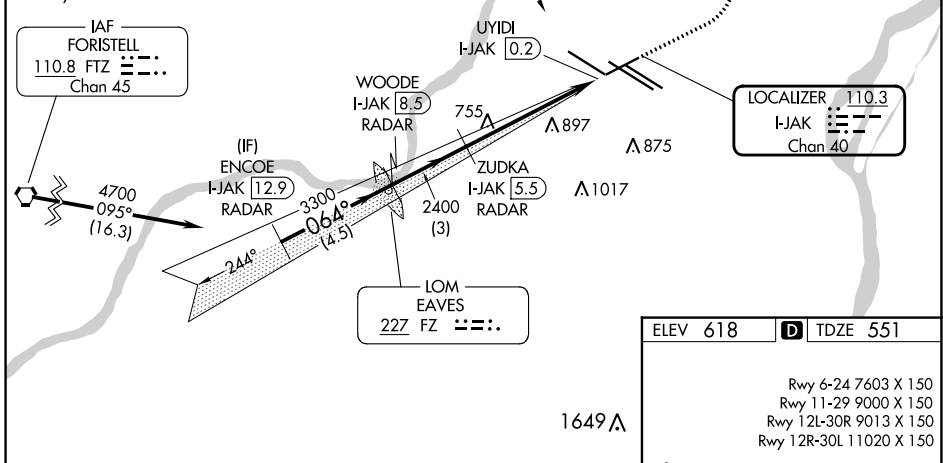
D-ATIS <b>125.025</b> <b>379.925</b>	ST. LOUIS APP CON <b>132.125 360.6</b>	ST. LOUIS TOWER <b>132.475 239.275</b>	GND CON <b>121.9 348.6</b> (Inbound) <b>121.65 377.175</b> (Outbound) <b>118.925 227.125</b> (Rwy 11/29)	CLNC DEL <b>119.5 363.1</b>	CPDLC
--------------------------------------------	-------------------------------------------	-------------------------------------------	-------------------------------------------------------------------------------------------------------------------	--------------------------------	-------

ALTERNATE MISSED APCH FIX

090°  
270°  
R-090

TROY  
TOY  
116.0  
Chan 107

Procedure NA for arrival on FTZ VORTAC airway radials 082 CW 095.



CATEGORY	A	B	C	D	E
S-ILS 6	751/24 200 (200-1/2)				
S-LOC 6	1020/24	469 (500-1/2)	1020/50 469 (500-1)		

ELEV 618 TDZE 551

Rwy 6-24 7603 X 150  
Rwy 11-29 9000 X 150  
Rwy 12L-30R 9013 X 150  
Rwy 12R-30L 11020 X 150

HIRL all Rwy's  
TDZ/CL Rwy's 11, 12L, 12R, 29, and 30R  
FAF to MAP 5.3 NM

Knots	60	90	120	150	180
Min:Sec	5:18	3:32	2:39	2:07	1:46

NC-3, 26 DEC 2024 to 23 JAN 2025

NC-3, 26 DEC 2024 to 23 JAN 2025