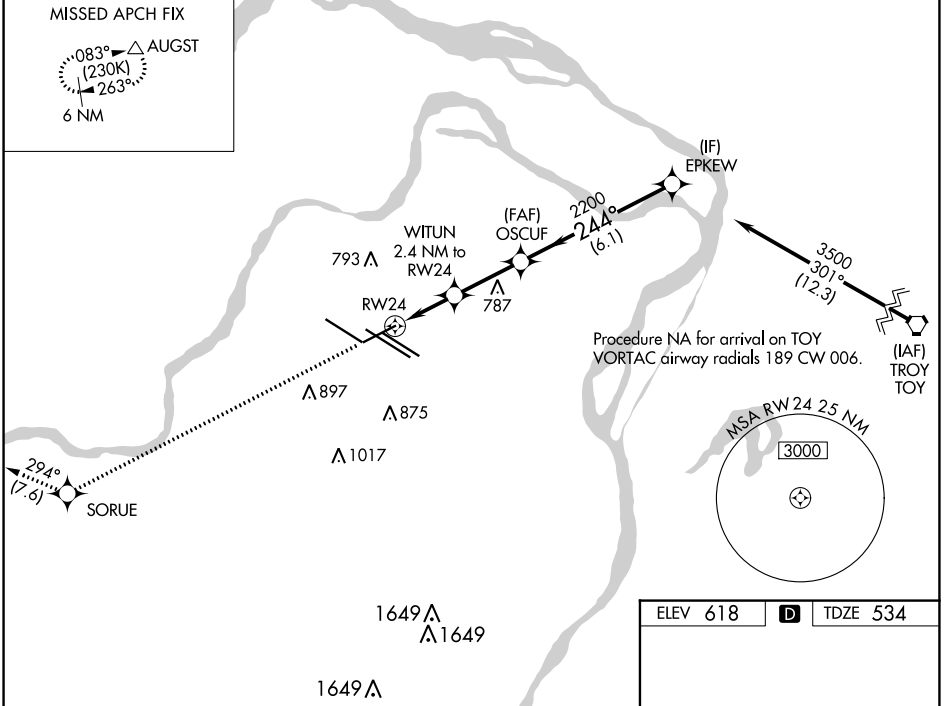


WAAS CH 87021 W24A	APP CRS 244°	Rwy Idg 7603 TDZE 534 Apt Elev 618
--	------------------------	---

RNAV (GPS) RWY 24
ST LOUIS LAMBERT INTL (STL)

<p>▼ For uncompensated Baro-VNAV systems, LNAV/VNAV NA below -16°C (4°F) or above 54°C (130°F). Rwy 24 helicopter visibility reduction below ¼ SM NA. DME/DME RNP-0.3 NA. For inop ALS, increase LNAV/VNAV all Cats visibility to 1½ and LNAV Cats C, D and E visibility to 1½.</p>		<p>MALS </p>	<p>MISSED APPROACH: Climb to 3000 direct SORUE and on track 294° to AUGST and hold.</p>		
<p>D-ATIS 125.025 379.925</p>	<p>ST. LOUIS APP CON 132.125 360.6</p>	<p>ST. LOUIS TOWER 120.05 284.6</p>	<p>GND CON 121.9 348.6 (Inbound) 121.65 377.175 (Outbound) 118.925 227.125 (Rwy 11/29)</p>	<p>CLNC DEL 119.5 363.1</p>	<p>CPDLC</p>



3000	SORUE	tr 294°	AUGST	EPKEW	
*LNAV only					
	WITUN 2.4 NM to RWY24	OSCUF 2200	3500		
	1.6 NM to RWY24	1340	2200	GP 3.00° TCH 50	
	1.6 NM	0.8 NM	2.7 NM	6.1 NM	
CATEGORY	A	B	C	D	E
LPV DA		734/40	200 (200-¾)		
LNAV/VNAV DA		931/50	397 (400-1)		
LNAV MDA	1080/40	546 (500-¾)	1080-1¾	546 (500-1¾)	

ELEV 618	D	TDZE 534
----------	----------	----------

Rwy 6-24 7603 X 150
Rwy 11-29 9000 X 150
Rwy 12L-30R 9013 X 150
Rwy 12R-30L 11020 X 150

244°

TWR 774

HIRL all Rwys
TDZ/CL Rwys 11, 12L, 12R, 29, and 30R

NC-3, 26 DEC 2024 to 23 JAN 2025

NC-3, 26 DEC 2024 to 23 JAN 2025