

# RNAV (RNP) Z RWY 30R

ST LOUIS LAMBERT INTL (STL)

APP CRS	Rwy Idg	<b>9013</b>
<b>303°</b>	TDZE	<b>605</b>
	Apt Elev	<b>618</b>

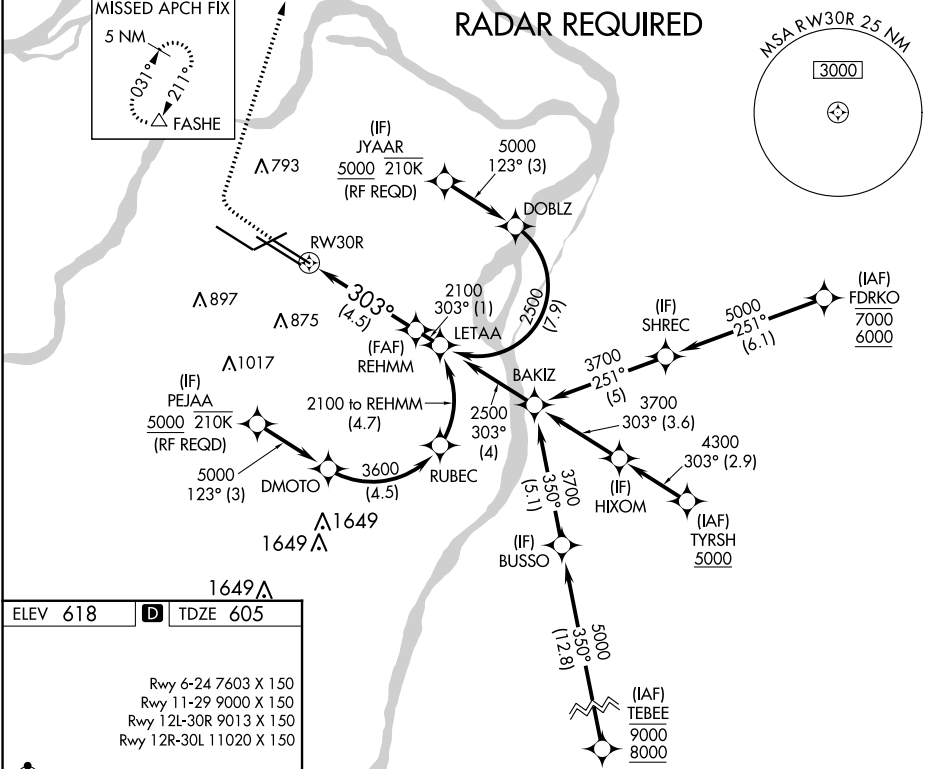
For uncompensated Baro-VNAV systems, procedure NA below -16°C (4°F) or above 54°C (130°F). GPS required. Simultaneous approach authorized with Rwy 29, except for arrivals at JYAAR and PEJAA. Use of FD or AP required during simultaneous operations. For inop ALS, increase RNP 0.30 all Cats visibility to RVR 6000.

ALSF-2



MISSED APPROACH: Climb to 1100 then climbing right turn to 3000 direct FASHE and hold.

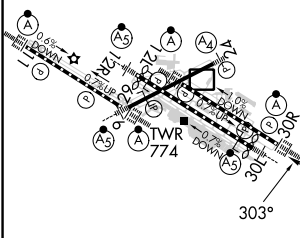
D-ATIS <b>125.025</b> <b>379.925</b>	ST. LOUIS APP CON <b>132.125 360.6</b>	ST. LOUIS TOWER <b>120.05 284.6</b>	GND CON <b>121.9 348.6</b> (Inbound) <b>121.65 377.175</b> (Outbound) <b>118.925 227.125</b> (Rwy 11/29)	CLNC DEL <b>119.5 363.1</b>	CPDLC
--	---	--	---	--------------------------------	-------



NC-3, 26 DEC 2024 to 23 JAN 2025

NC-3, 26 DEC 2024 to 23 JAN 2025

ELEV 618	<b>D</b>	TDZE 605
Rwy 6-24 7603 X 150		
Rwy 11-29 9000 X 150		
Rwy 12L-30R 9013 X 150		
Rwy 12R-30L 11020 X 150		



1100	3000	FASHE	See planview for multiple IF locations.
		REHMM 2100	
		RW30R	
		303°	
		2100	
		GP 3.00°	
		TCH 57	

CATEGORY	A	B	C	D
RNP 0.30 DA		969/40	364 (400-¾)	

## AUTHORIZATION REQUIRED