

ILS or LOC Z RWY 31

MCNARY FLD (SLE)

LOC/DME I-SLE 110.3 Chan 40	APP CRS 313°	Rwy Idg TDZE 213 Apt Elev 213	5811
--	------------------------	---	-------------

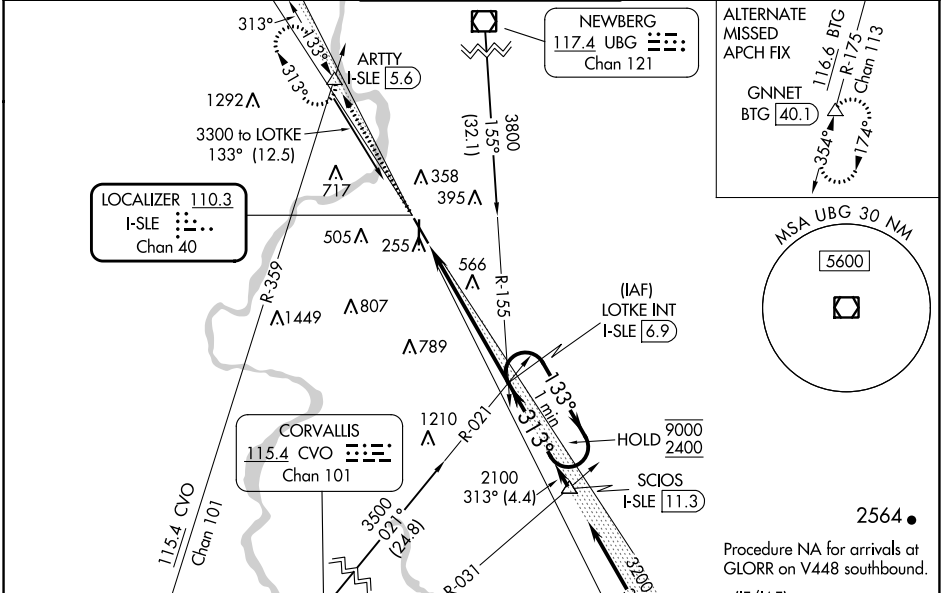
RADAR required for procedure entry at ARTY.

⚠ Circling Rwy 16, 34 NA at night. For inop ALS, increase S-LOC 31 Cat C/D visibility to 2½ SM.
⚠ *RVR 1800 authorized with use of FD or AP or HUD to DA (NA when using Mc Minnville altimeter setting).

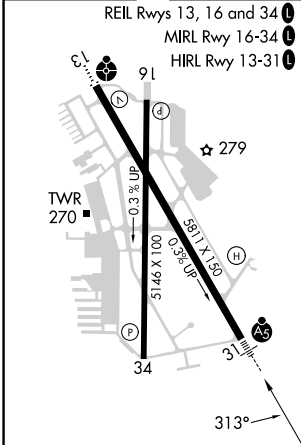
MALSR

MISSED APPROACH: Climb to 4000 on I-SLE localizer NW course (313°) to ARTY INT/I-SLE 5.6 DME and hold, continue climb-in-hold to 4000.

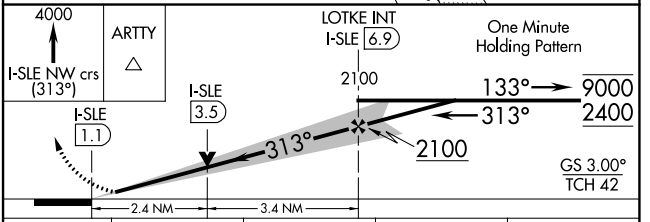
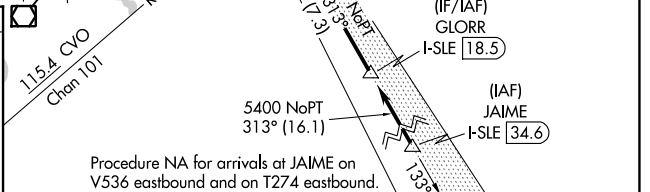
ATIS 124.55	SEATTLE CENTER 125.8 291.7	SALEM TOWER ★ 119.1 (CTAF) 0 257.2	GND CON 121.9	UNICOM 122.95
-----------------------	--------------------------------------	--	-------------------------	-------------------------



ELEV 213	D	TDZE 213
----------	----------	----------



FAF to MAP 5.8 NM					
Knots	60	90	120	150	180
Min:Sec	5:48	3:52	2:54	2:19	1:56



CATEGORY	A	B	C	D
S-ILS 31*	413/24 200 (200-½)			
S-LOC 31	1020/24 807 (900-½)	1020/40 807 (900-¾)	1020-1⅞ 807 (900-1⅞)	807 (900-1⅞)
C CIRCLING	1020-1 807 (900-1)	1020-1¼ 807 (900-1¼)	1060-2½ 847 (900-2½)	1260-3 1047 (1100-3)

NW-1, 26 DEC 2024 to 23 JAN 2025

NW-1, 26 DEC 2024 to 23 JAN 2025