

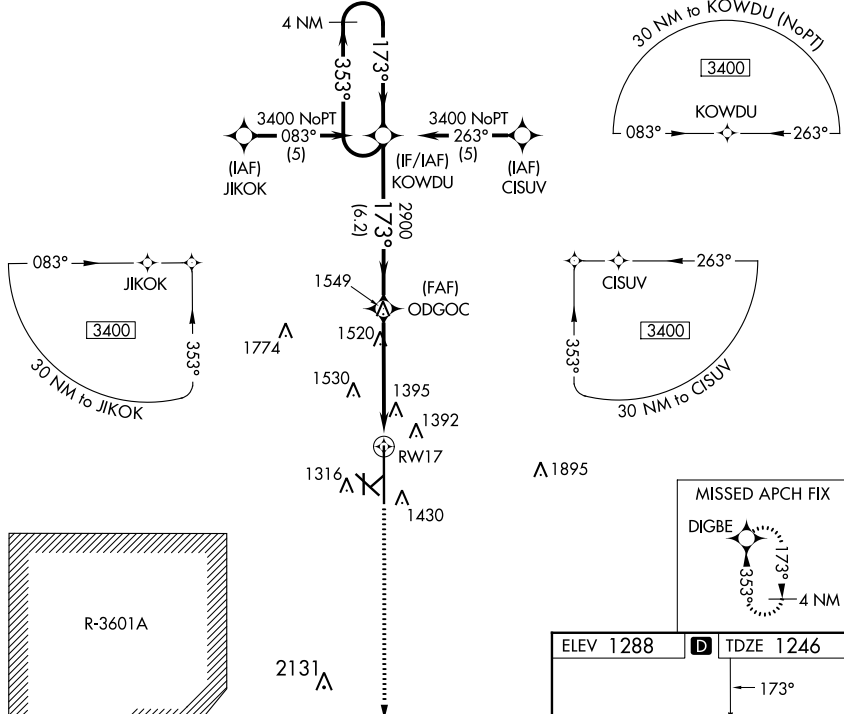
WAAS CH 70322 W17A	APP CRS 173°	Rwy ldg 12300 TDZE 1246 Apt Elev 1288
--	------------------------	--

RNAV (GPS) RWY 17

SALINA RGNL (SLN)

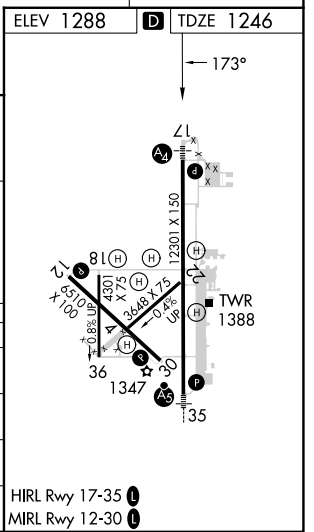
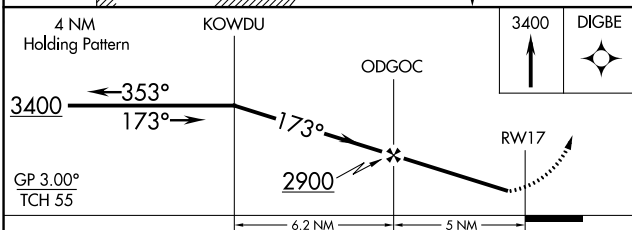
▽ DME/DME RNP-0.3 NA. Baro-VNAV NA below -17°C (2°F). Circling NA for Cat D southwest of Rwy 12-30. Inoperative table does not apply.	MALS 	MISSED APPROACH: Climb to 3400 direct DIGBE and hold.
--	----------	---

ATIS 120.15	KANSAS CITY CENTER 134.9 363.2	SALINA TOWER ★ 119.3 (CTAF) 257.7	GND CON 121.9 360.8	UNICOM 122.95
-----------------------	--	---	-------------------------------	-------------------------



NC-2, 26 DEC 2024 to 23 JAN 2025

NC-2, 26 DEC 2024 to 23 JAN 2025



CATEGORY	A	B	C	D
LPV DA	1496-1 250 (300-1)			
LNAV/VNAV DA	1741-1¾ 495 (500-1¾)			
LNAV MDA	1780-1 534 (500-1)	1780-1½ 534 (500-1½)	1780-1¾ 534 (500-1¾)	
CIRCLING	1820-1¾ 532 (600-1¾)	1840-1¾ 552 (600-1¾)	1860-1¾ 572 (600-1¾)	1860-2 572 (600-2)