

WAAS CH 77522 W35A	APP CRS 353°	Rwy ldg 12300 TDZE 1271 Apt Elev 1288
--	------------------------	--

RNAV (GPS) RWY 35

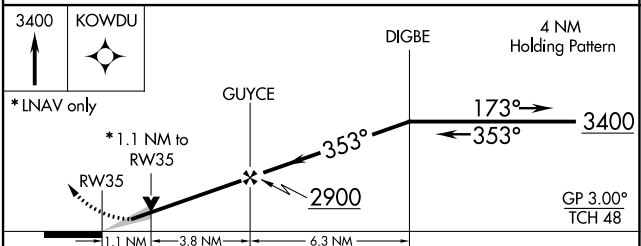
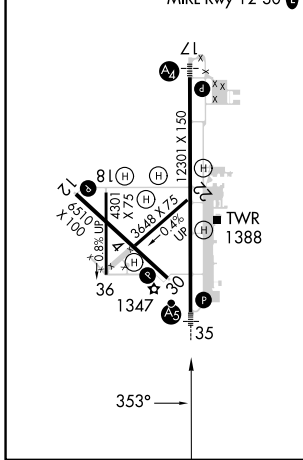
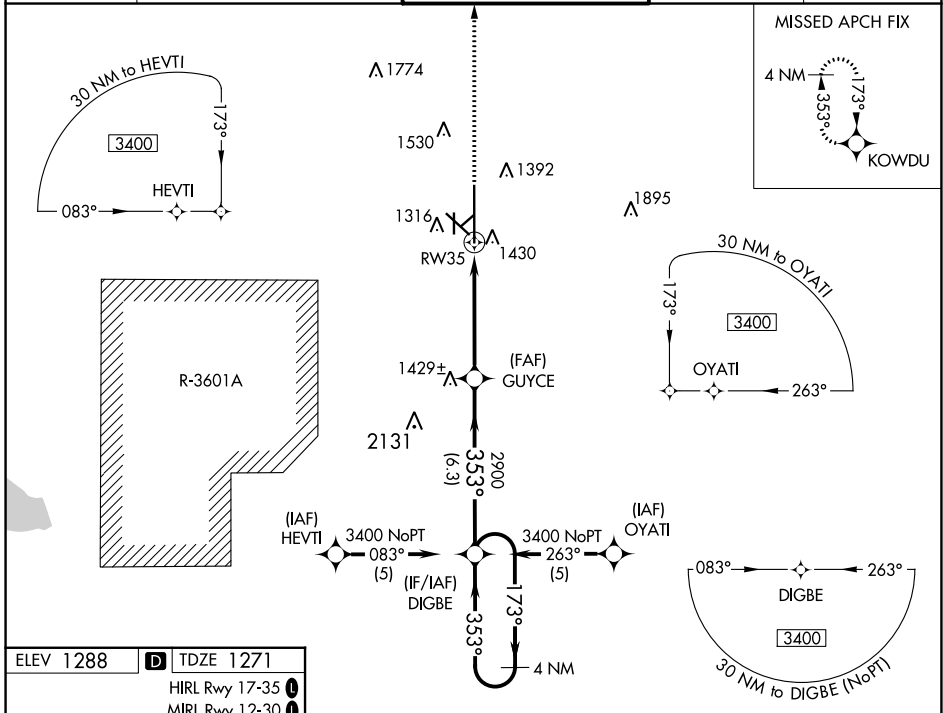
SALINA RGNL (SLN)

▼ DME/DME RNP-0.3 NA. Baro-VNAV NA below -17°C (2°F).
 Circling NA for Cat D southwest of Rwy 12-30. For inoperative MALSR, increase LNAV Cat D visibility to 1¼ and LPV visibility all Cats to ¾.



MISSED APPROACH: Climb to 3400 direct KOWDU and hold.

ATIS 120.15	KANSAS CITY CENTER 134.9 363.2	SALINA TOWER * 119.3 (CTAF) 0 257.7	GND CON 121.9 360.8	UNICOM 122.95
-----------------------	--	---	-------------------------------	-------------------------



CATEGORY	A	B	C	D
LPV DA		1521-1/2	250 (300-1/2)	
LNAV/VNAV DA		1623-3/4	352 (400-3/4)	
LNAV MDA	1680-1/2	409 (400-1/2)	1680-3/4 409 (400-3/4)	1680-1 409 (400-1)
CIRCLING	1820-1 1/4 532 (600-1 1/4)	1840-1 1/4 552 (600-1 1/4)	1860-1 1/2 572 (600-1 1/2)	1860-2 572 (600-2)

NC-2, 26 DEC 2024 to 23 JAN 2025

NC-2, 26 DEC 2024 to 23 JAN 2025