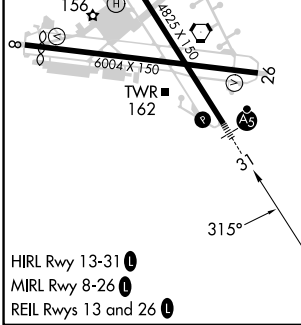
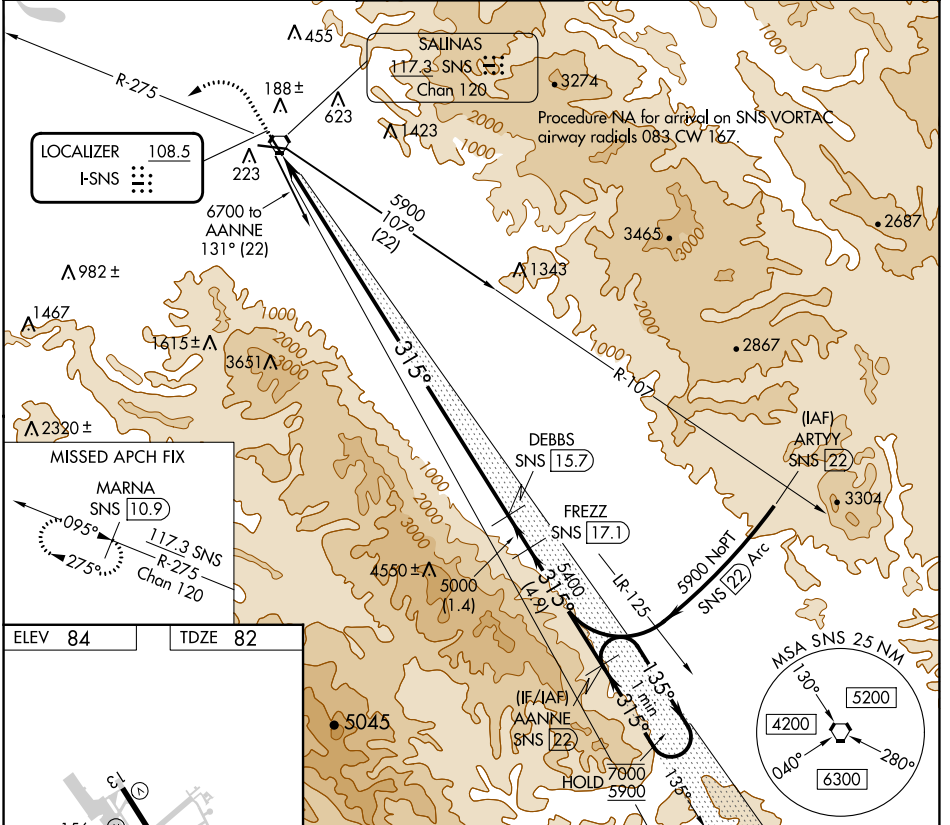


LOC I-SNS <b>108.5</b>	APP CRS <b>315°</b>	Rwy Idg TDZE Apt Elev	<b>4825</b> <b>82</b> <b>84</b>
---------------------------	------------------------	-----------------------------	---------------------------------------

# ILS RWY 31

SALINAS MUNI (SNS)

DME required.		MALSR	MISSED APPROACH: Climb to 800, then climbing left turn to 3000 on SNS VORTAC R-275 to MARNA/SNS 10.9 DME and hold, continue climb-in-hold to 3000.	
ATIS <b>124.85</b>	NORCAL APP CON <b>133.0 251.15</b>	SALINAS TOWER* <b>119.525 (CTAF) 239.3</b>	GND CON <b>121.7</b>	UNICOM <b>123.0</b>



800	3000	MARNASNS 10.9	VGSI and ILS glidepath not coincident (VGSI Angle 3.00/TCH 59). AANNE SNS 22	One Minute Holding Pattern
		FREZZSNS 17.1	DEBBSSNS 15.7	
		5000	5400	7000 5900
15.3 NM		1.4 NM	4.9 NM	GS 3.00° TCH 50
CATEGORY	A	B	C	D
S-ILS 31	302/24 220 (300-1/2)			

SW-2, 26 DEC 2024 to 23 JAN 2025

SW-2, 26 DEC 2024 to 23 JAN 2025