

(FFU9.FFU) 24025

# FAIRFIELD NINE DEPARTURE

AL-365 (FAA)

SALT LAKE CITY INTL (SLC)  
SALT LAKE CITY, UTAH

D-ATIS  
124.75 125.625  
CLNC DEL  
127.3 379.975  
CPDLC  
SALT LAKE CITY DEP CON  
128.6 322.3

**TOP ALTITUDE:  
10000**

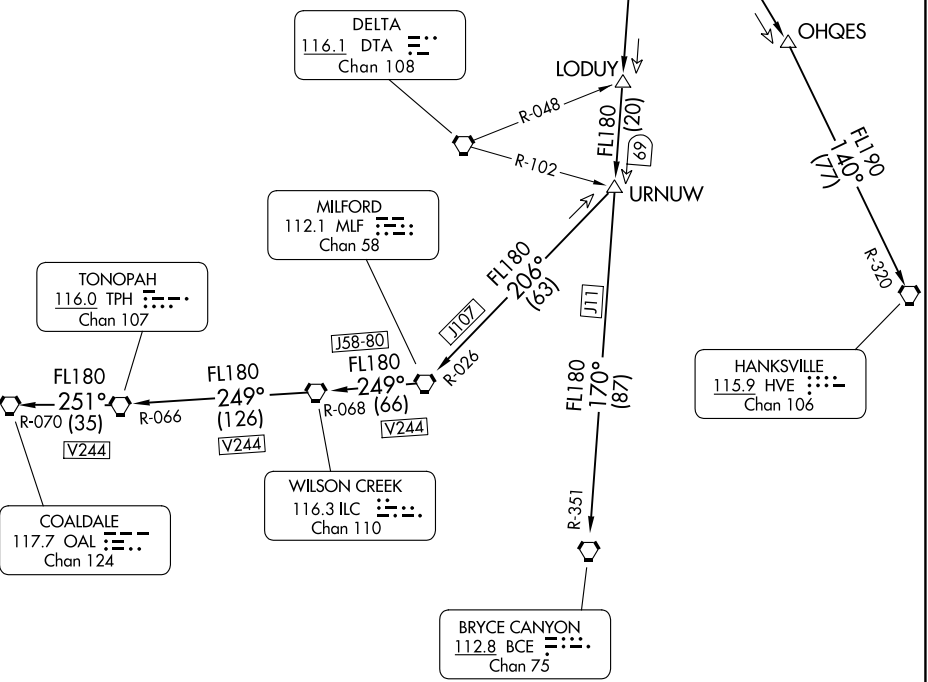
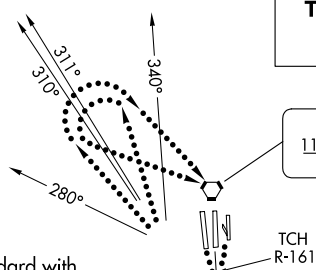
WASATCH  
116.8 TCH  
Chan 115

FAIRFIELD  
116.6 FFU  
Chan 113

### TAKEOFF MINIMUMS

Rwys 14, 32, 34L/R, 35: NA- ATC.  
Rwys 16L/R, 17: Assigned heading 160°, standard with minimum climb of 260' per NM to 6000; assigned heading 280° CW 340°, standard with minimum climb of 400' per NM to 8300.

NOTE: DME required.  
NOTE: RADAR required.  
NOTE: This is a RADAR vector departure to assigned route or fix.



SW-4, 26 DEC 2024 to 23 JAN 2025

SW-4, 26 DEC 2024 to 23 JAN 2025

(CONTINUED ON FOLLOWING PAGE)

NOTE: Chart not to scale.

# FAIRFIELD NINE DEPARTURE

(FFU9.FFU) 17AUG17

SALT LAKE CITY, UTAH  
SALT LAKE CITY INTL (SLC)



DEPARTURE ROUTE DESCRIPTION

TAKEOFF RUNWAYS 16L/R, 17: Climb on heading 160° or as assigned, maintain 10000 or assigned lower altitude. Thence . . . .  
. . . . expect RADAR vectors to FFU VORTAC then on filed/assigned transition.  
Expect clearance to filed altitude 10 minutes after departure.

LOST COMMUNICATIONS: If not in contact with departure control 1 minute after takeoff:

RUNWAYS 16L and 17: Assigned heading 160°, turn right, thence . . . .

RUNWAY 16R: Assigned heading 160°, turn left, thence . . . .

. . . . climb to 11000 via TCH R-161 to FFU VORTAC and continue climb via assigned/filed transition.

RUNWAYS 16L/R, 17: Assigned heading 280° CW 340°, fly assigned heading to 11000. Then, aircraft heading 280° CW 310°, execute a climbing right turn, thence . . . .

. . . . aircraft heading 311° CW 340°, execute a climbing left turn, thence . . . .

. . . . direct TCH VORTAC, TCH R-161 to FFU VORTAC, and continue climb via assigned/filed transition.

BRYCE CANYON TRANSITION (FFU9.BCE): From over FFU VORTAC on FFU R-170 to URNUW, then on FFU R-170 and BCE R-351 to BCE VORTAC.

COALDALE TRANSITION (FFU9.OAL): From over FFU VORTAC on FFU R-170 and MLF R-026 to MLF VORTAC, then on MLF R-249 and ILC R-068 to ILC VORTAC, then on ILC R-249 and TPH R-066 to TPH VORTAC, then on TPH R-251 and OAL R-070 to OAL VORTAC.

HANKSVILLE TRANSITION (FFU9.HVE): From over FFU VORTAC on FFU R-133 and HVE R-320 to HVE VORTAC.

MILFORD TRANSITION (FFU9.MLF): From over FFU VORTAC on FFU R-170 and MLF R-026 to MLF VORTAC.

SW-4, 26 DEC 2024 to 23 JAN 2025

SW-4, 26 DEC 2024 to 23 JAN 2025