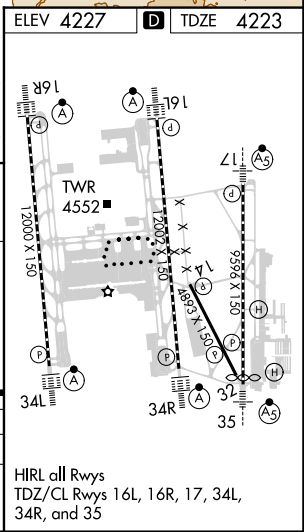
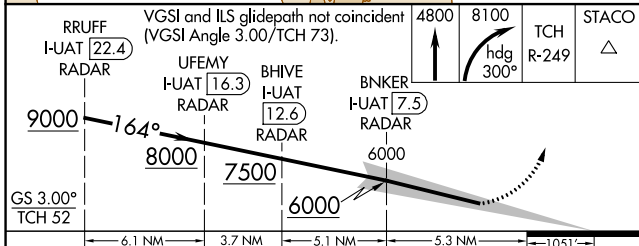
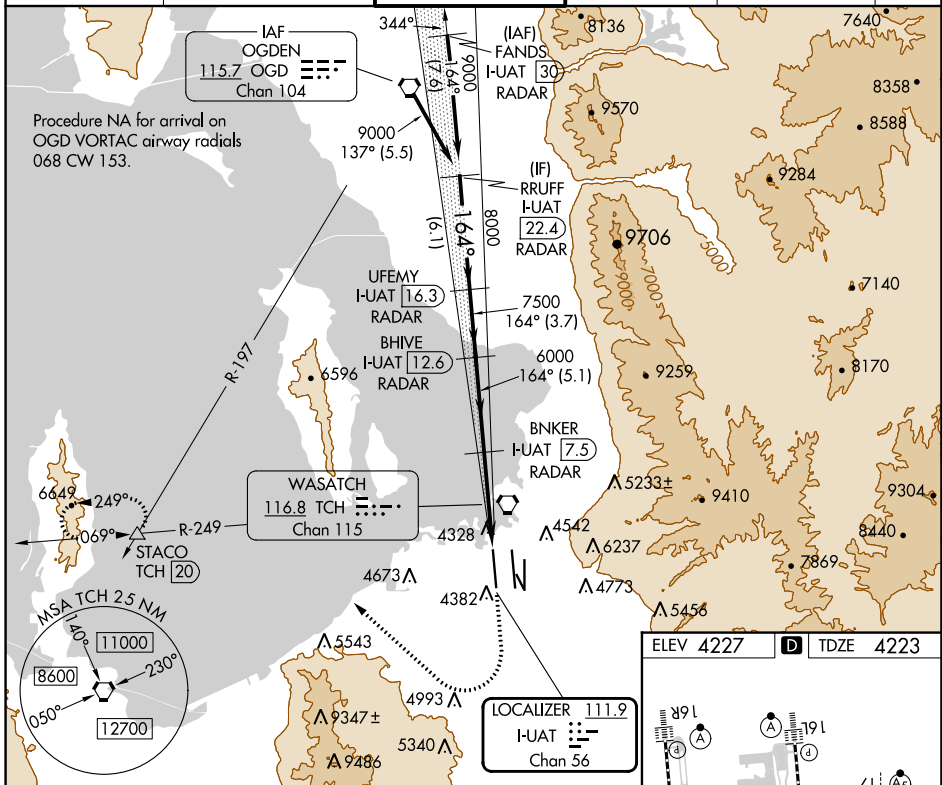


LOC/DME I-UAT 111.9 Chan 56	APP CRS 164°	Rwy ldg 12000
		TDZE 4223
		Apt Elev 4227

ILS RWY 16R (SA CAT I)

SALT LAKE CITY INTL (SLC)

DME or RADAR required.		ALSIF-2	MISSED APPROACH: Climb to 4800 then climbing right turn to 8100 on heading 300° and on TCH VORTAC R-249 to STACO INT/TCH 20 DME and hold.		
⚠ Simultaneous approach authorized. Requires specific OPSPEC, MSPEC, or LOA approval and use of HUD to DH.		(A)			
D-ATIS 124.75 125.625	SALT LAKE CITY APP CON 125.7 284.6	SALT LAKE CITY TOWER 132.65 336.4	GND CON 123.775 348.6	CLNC DEL 127.3 379.975	CPDLC



RRUFF I-UAT 22.4 RADAR	UFEY I-UAT 16.3 RADAR	BHIVE I-UAT 12.6 RADAR	BNKER I-UAT 7.5 RADAR	STACO TCH 20
9000	8000	7500	6000	4800
6.1 NM	3.7 NM	5.1 NM	5.3 NM	1051'
GS 3.00° TCH 52	4800 8100 TCH STACO			
RRUFF I-UAT 22.4 RADAR	VGSI and ILS glidepath not coincident (VGSI Angle 3.00/TCH 73).			
RRUFF I-UAT 22.4 RADAR	UFEY I-UAT 16.3 RADAR	BHIVE I-UAT 12.6 RADAR	BNKER I-UAT 7.5 RADAR	STACO TCH 20
9000	8000	7500	6000	4800
6.1 NM	3.7 NM	5.1 NM	5.3 NM	1051'
GS 3.00° TCH 52	4800 8100 TCH STACO			
RRUFF I-UAT 22.4 RADAR	VGSI and ILS glidepath not coincident (VGSI Angle 3.00/TCH 73).			

SW-4, 26 DEC 2024 to 23 JAN 2025

SW-4, 26 DEC 2024 to 23 JAN 2025