

LOC/DME I-BNT 111.5 Chan 52	APP CRS 169°R	Rwy Idg TDZE 9596 4219	Apt Elev 4227
--	-------------------------	--	-------------------------

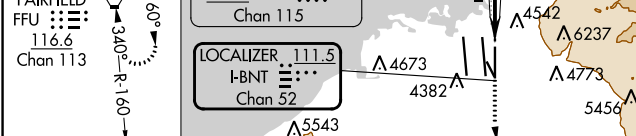
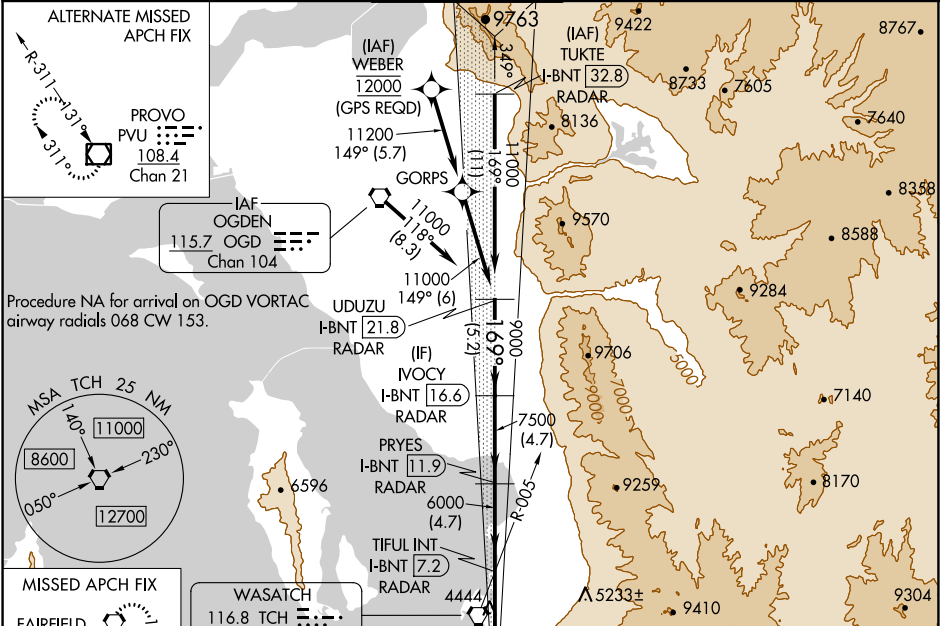
ILS RWY 17 (SA CAT I & II)

SALT LAKE CITY INTL (SLC)

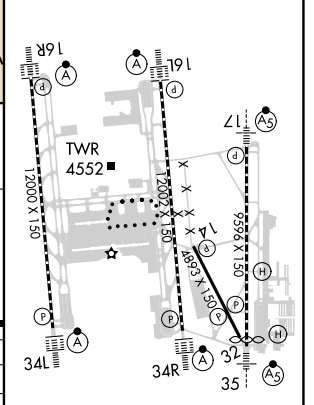
▼ DME or RADAR required. Simultaneous approach authorized. SA CAT I: Requires specific OPSPEC, MSPEC, or LOA approval and use of HUD to DH. SA CAT II: Reduced lighting: Requires specific OPSPEC, MSPEC, or LOA approval and use of autoland or HUD to touchdown.

MALS MISSED APPROACH: Climb to 5800 then climbing left turn to 10000 direct FFU VORTAC and hold.

D-ATIS 124.75 125.625	SALT LAKE CITY APP CON 125.7 284.6	SALT LAKE CITY TOWER 118.3 257.8	GND CON 121.9 348.6	CLNC DEL 127.3 379.975	CPDLC
---------------------------------	--	--	-------------------------------	----------------------------------	-------



ELEV 4227	D	TDZE 4219
-----------	---	-----------



UDUZU I-BNT 21.8 RADAR	VOCY I-BNT 16.6 RADAR	PRYES I-BNT 11.9 RADAR	TIFUL INT I-BNT 7.2 RADAR
VGSIs and ILS glidepath not coincident (VGSi Angle 3.00/TCH 73).			

CATEGORY	A	B	C	D
S-ILS 17	SA CAT I RA 149/14 150 DA 4369			
S-ILS 17	SA CAT II RA 99/12 100 DA 4319			

HIRL all Rwwys
TDZ/CL Rwwys 16L, 16R, 17, 35, 34L, and 34R

SA CATEGORY I & II ILS - SPECIAL AIRCREW & AIRCRAFT CERTIFICATION REQUIRED

SW-4, 26 DEC 2024 to 23 JAN 2025

SW-4, 26 DEC 2024 to 23 JAN 2025