

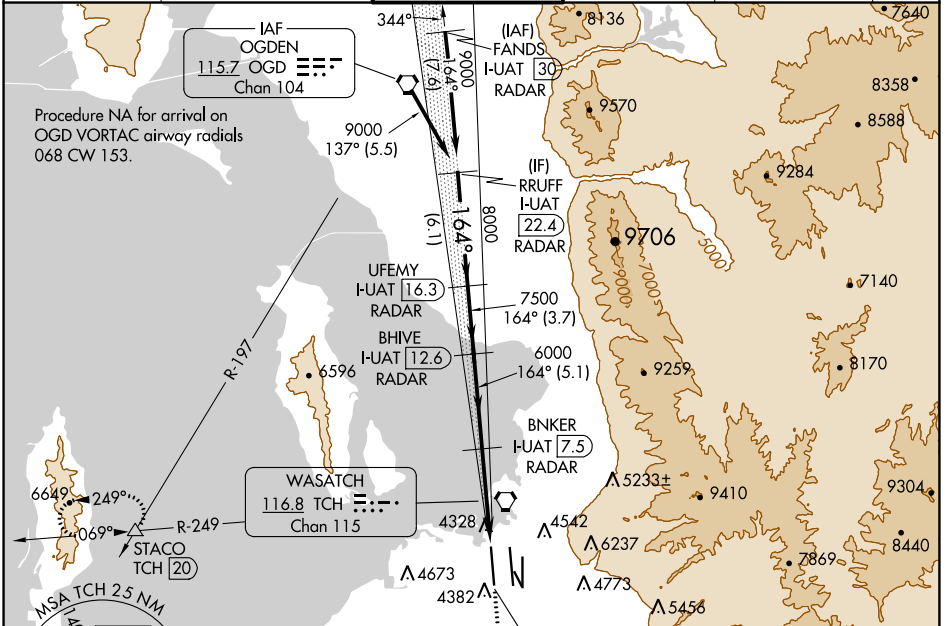
LOC/DME I-UAT 111.9 Chan 56	APP CRS 164°	Rwy ldg 12000 TDZE 4223 Apt Elev 4227
---	------------------------	--

ILS or LOC RWY 16R

SALT LAKE CITY INTL (SLC)

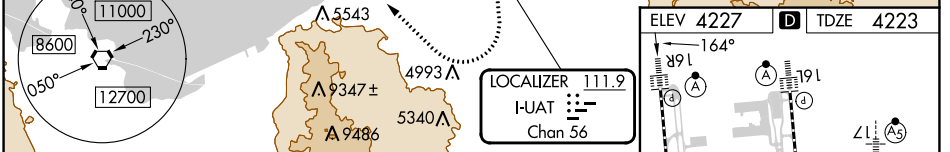
DME or RADAR required.	ALSF-2	MISSED APPROACH: Climb to 4800 then climbing right turn to 8100 on heading 300° and on TCH VORTAC R-249 to STACO INT/TCH 20 DME and hold.
▼ Simultaneous approach authorized. For inop ALS, increase S-LOC 16R Cat C and D visibilities to RVR 5500.		

D-ATIS 124.75 125.625	SALT LAKE CITY APP CON 125.7 284.6	SALT LAKE CITY TOWER 132.65 336.4	GND CON 123.775 348.6	CLNC DEL 127.3 379.975	CPDLC
---------------------------------	--	---	---------------------------------	----------------------------------	-------



SW-4, 26 DEC 2024 to 23 JAN 2025

SW-4, 26 DEC 2024 to 23 JAN 2025



VGSIs and ILS glidepath not coincident (VGSi Angle 3.00/TCH 73).				
RRUFF I-UAT 22.4 RADAR	UFEMY I-UAT 16.3 RADAR	BHIVE I-UAT 12.6 RADAR	BNKER I-UAT 7.5 RADAR	STACO TCH R-249
9000	8000	7500	6000	6000
* I-UAT 3 (2.1) * LOC only				
GS 3.00° TCH 52				
6.1 NM 3.7 NM 5.1 NM 4.5 NM 0.9 NM				

CATEGORY	A	B	C	D
S-ILS 16R	4423/18		200 (200-½)	
S-LOC 16R	4580/24	357 (400-½)	4580/30 357 (400-¾)	4580/40 357 (400-¾)

