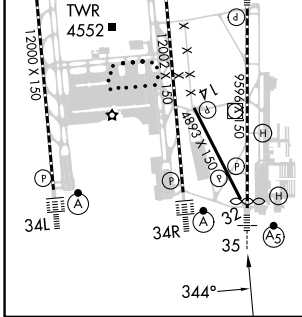
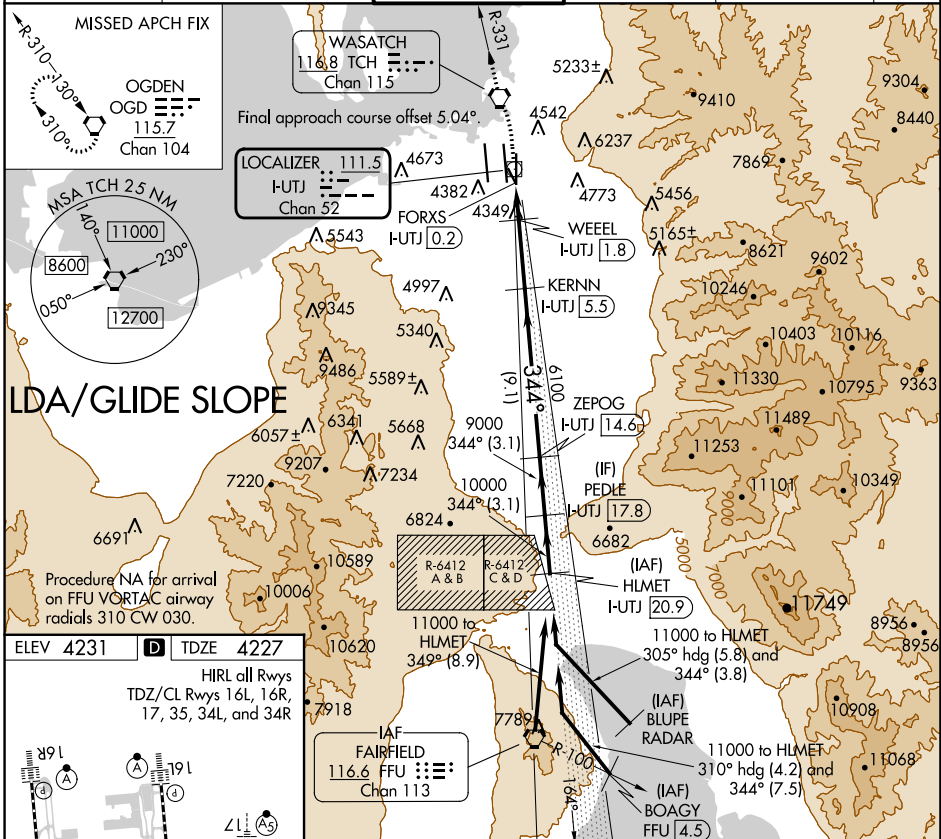


LOC/DME I-UTJ <b>111.5</b> Chan <b>52</b>	APP CRS <b>344°</b>	Rwy Idg TDZE Apt Elev <b>9272</b> <b>4227</b> <b>4231</b>
---	------------------------	--

**LDA RWY 35**  
SALT LAKE CITY INTL (SLC)

DME required.				MALSR	MISSED APPROACH: Climb to 4800 then climbing left turn to 9000 direct TCH VORTAC and on TCH VORTAC R-331 to OGD VORTAC and hold.		
Simultaneous approach authorized. For inop ALS, increase S-LDA/GS 35 Cat E visibility to RVR 4000, increase S-LDA 35 Cat E visibility to 1/4 SM.							
D-ATIS <b>124.75 125.625</b>	SALT LAKE CITY APP CON <b>125.7 284.6</b>	SALT LAKE CITY TOWER <b>118.3 257.8</b>	GND CON <b>121.9 348.6</b>	CLNC DEL <b>127.3 379.975</b>	CPDLC		



ELEV 4231		D		TDZE 4227		HIRL all Rwys TDZ/CL Rwys 16L, 16R, 17, 35, 34L, and 34R				VGS and LDA glidepath not coincident (VGS Angle 3.00°/TCH 74).	
4800			9000			TCH			OGD		
↑			↶			□			□		
↑			↶			□			□		
			TCH			R-331					
			R-331								
			FORXS			WEEL			KERNN		
			I-UTJ [0.2]			I-UTJ [1.8]			I-UTJ [5.5]		
			DME ANT.								
			I-UTJ [0.9]			I-UTJ [1.8]			I-UTJ [5.5]		
			4900			6100			11000		
			4900			6100			11000		
			1.1 NM			0.9 NM			3.7 NM		
			1.1 NM			0.9 NM			3.7 NM		
			CATEGORY			A			B		
			CATEGORY			A			B		
			S-LDA/GS 35			4477/24			250 (300-1/2)		
			S-LDA 35			4660/24			433 (500-1/2)		
			S-LDA 35			4660/40			433 (500-3/4)		

SW-4, 26 DEC 2024 to 23 JAN 2025

SW-4, 26 DEC 2024 to 23 JAN 2025