

LEEHY FIVE ARRIVAL (RNAV)

AL-365 (FAA)

SALT LAKE CITY INTL (SLC)
SALT LAKE CITY, UTAH

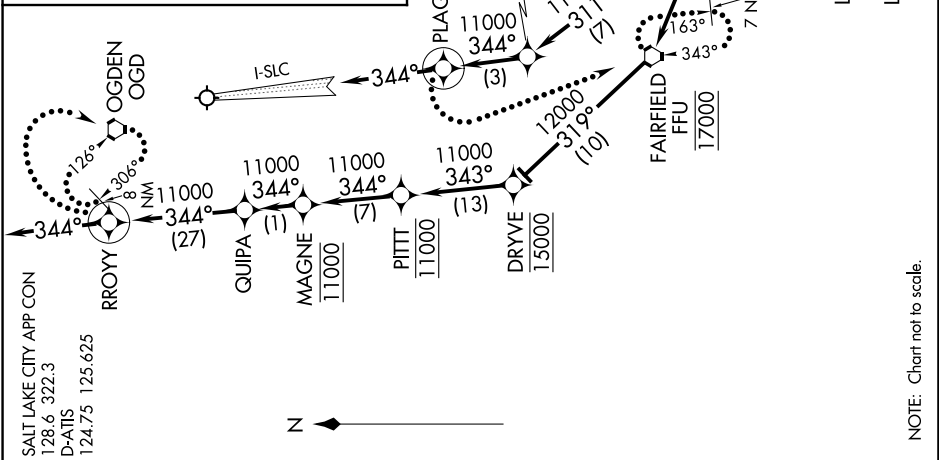
SW-4, 26 DEC 2024 to 23 JAN 2025

HELPR TRANSITION (HELPR.LEEHY5)
MEEKER TRANSITION (EKR.LEEHY5)

From SPANE on track 285° to LEEHY, thence via runway transition.
LANDING RUNWAYS 16L/R and 17: From LEEHY on track 285° to FFU VORTAC, then on track 319° to DRYVE, then as depicted to RROYY, then on 344° heading. Expect RADAR vectors to final approach course.
LANDING NORTH RUNWAYS 34L/R and 35: From LEEHY on track 303° to BLUPE, then on track 311° to KAMMP, then on track 344° to PLAGE, then on 344° heading. Rwy 34R intercept I-SLC localizer. Proceed inbound, expect ILS/VISUAL approach. Rwys 34L and 35 expect RADAR vectors to final approach course.

LOST COMMUNICATIONS
LANDING NORTH: At PLAGE, turn left direct FFU VORTAC and hold. Maintain 11000.
LANDING SOUTH: At RROYY, turn right direct OGD VORTAC and hold. Maintain 11000.

NOTE: EKR Transition landing north: For non-GPS equipped aircraft PUC and DTA DMEs must be operational.
 Landing south: For non-GPS equipped aircraft DTA, TCH, PUC, and PVU DMEs must be operational.
NOTE: HELPR Transition landing north: For non-GPS equipped aircraft FFU DME must be operational.
 Landing south: For non-GPS equipped aircraft TCH and PVU DMEs must be operational.
NOTE: RADAR required.
NOTE: RNAV 1
NOTE: DME/DME/IRU or GPS required.
NOTE: Turbojet aircraft only.



LEEHY FIVE ARRIVAL (RNAV)

(SPANE.LEEHY5) 17AUG17

SALT LAKE CITY, UTAH
SALT LAKE CITY INTL (SLC)

NOTE: Chart not to scale.

SW-4, 26 DEC 2024 to 23 JAN 2025