

RUGGD THREE DEPARTURE (RNAV)
(RUGGD3, RUGGD) 20APR23

D-ATIS
124.75 125.625
CLNC DEL
127.3 379.975
CPDLC
GND CON
121.9 348.6 (Rwys 14-32, 17-35)
123.775 348.6 (Rwys 16L-34R, 16R-34L)
SALT LAKE CITY TOWER
119.05 257.8 (Rwy 16L-34R)
118.3 257.8 (Rwys 14-32, 17-35)
132.65 336.4 (Rwy 16R-34L)
SALT LAKE CITY DEP CON
135.5 316.15

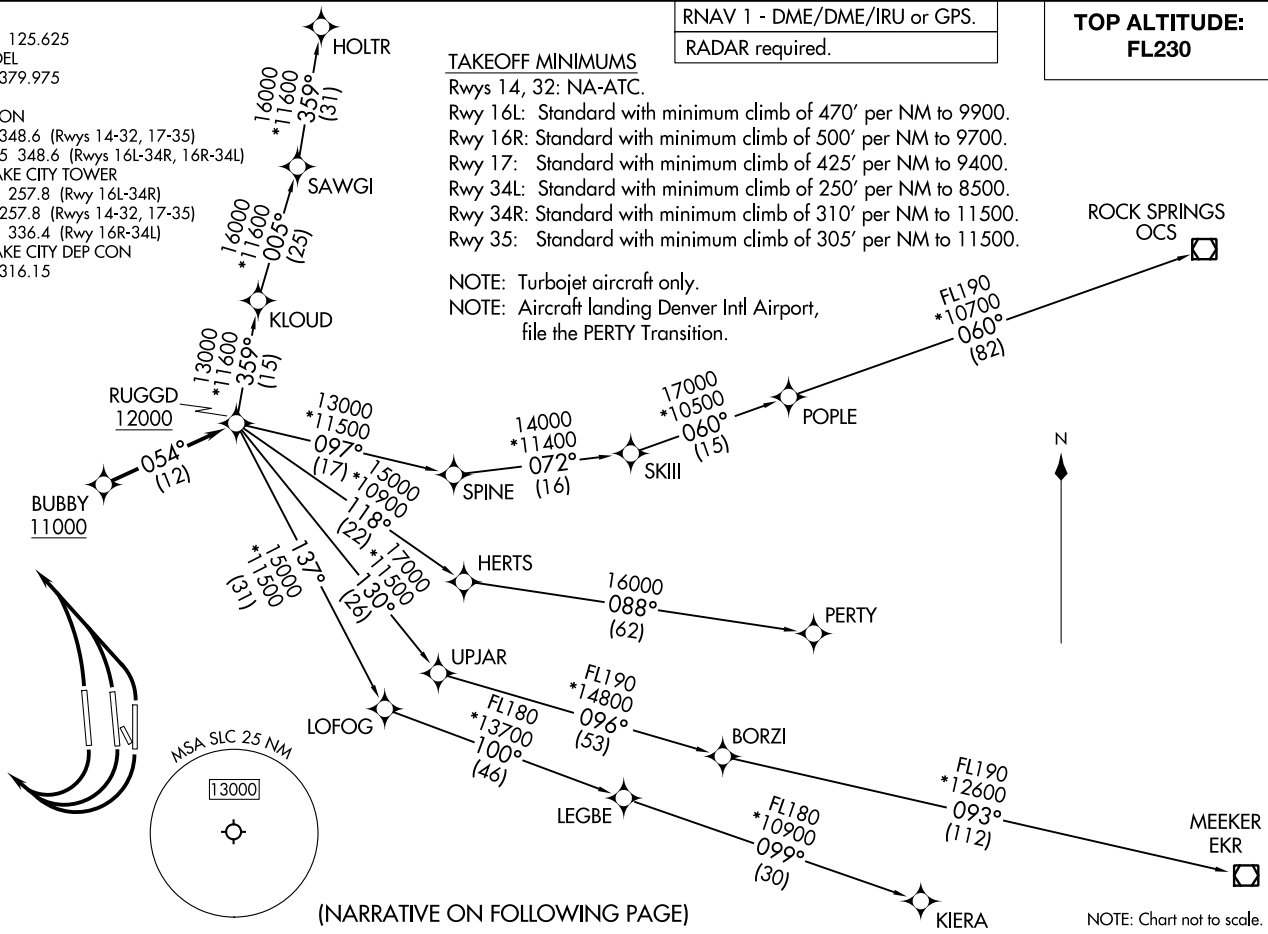
RNAV 1 - DME/DME/IRU or GPS.
RADAR required.

TOP ALTITUDE:
FL230

TAKEOFF MINIMUMS

Rwys 14, 32: NA-ATC.
Rwy 16L: Standard with minimum climb of 470' per NM to 9900.
Rwy 16R: Standard with minimum climb of 500' per NM to 9700.
Rwy 17: Standard with minimum climb of 425' per NM to 9400.
Rwy 34L: Standard with minimum climb of 250' per NM to 8500.
Rwy 34R: Standard with minimum climb of 310' per NM to 11500.
Rwy 35: Standard with minimum climb of 305' per NM to 11500.

NOTE: Turbojet aircraft only.
NOTE: Aircraft landing Denver Intl Airport, file the PERTY Transition.



(NARRATIVE ON FOLLOWING PAGE)

NOTE: Chart not to scale.

SALT LAKE CITY, UTAH
SALT LAKE CITY INTL (SLC)

(RUGGD3, RUGGD) 23110
RUGGD THREE DEPARTURE (RNAV)

AL:365 (FAA)

SALT LAKE CITY INTL (SLC)
SALT LAKE CITY, UTAH



DEPARTURE ROUTE DESCRIPTION

TAKEOFF RUNWAYS 16L/R, 17: Climbing right turn on a heading between 280° CW 340° from DER as assigned by ATC, thence

TAKEOFF RUNWAYS 34L/R, 35: Climbing left turn on a heading between 310° CW 340° from DER as assigned by ATC, thence

. . . . on RADAR vectors to cross BUBBY at or above 11000, then on track 054° to cross RUGGD at or above 12000, then on (transition). Maintain FL230 or lower filed altitude. Expect filed altitude 10 minutes after departure.

HOLTR TRANSITION (RUGGD3.HOLTR)

KIERA TRANSITION (RUGGD3.KIERA)

MEEKER TRANSITION (RUGGD3.EKR)

PERTY TRANSITION (RUGGD3.PERTY)

ROCK SPRINGS TRANSITION (RUGGD3.OCS)

SW-4, 26 DEC 2024 to 23 JAN 2025

SW-4, 26 DEC 2024 to 23 JAN 2025