

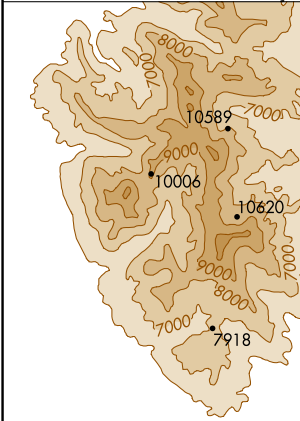
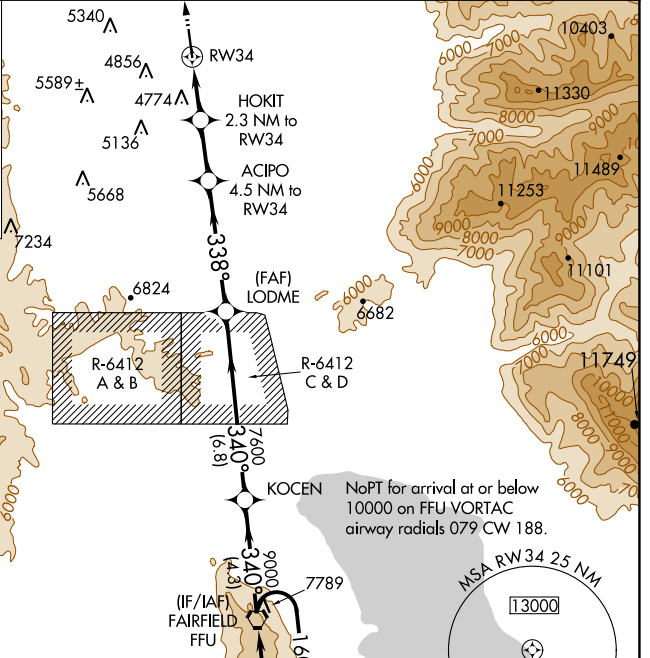
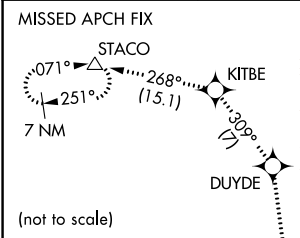
WAAS CH 82740 W34A	APP CRS 338°	Rwy Idg TDZE Apt Elev	5862 4606 4606
--	------------------------	-----------------------------	---

RNAV (GPS) RWY 34

SOUTH VALLEY RGNL (U42)

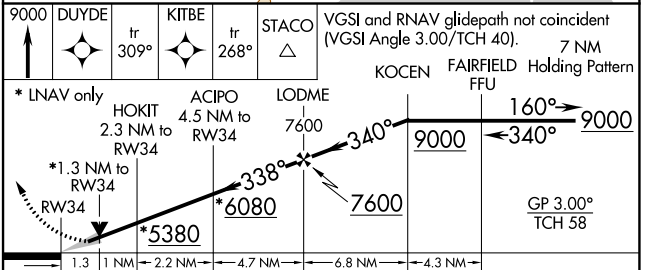
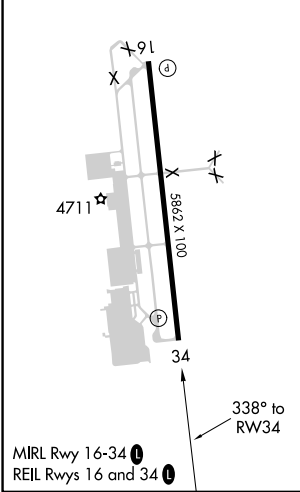
Baro-VNAV NA. DME/DME RNP-0.3 NA.
VDP NA when using Salt Lake City Intl altimeter setting.
MISSED APPROACH: Climb to 9000 direct DUYDE and on track 309° to KITBE and on track 268° to STACO and hold.

AWOS-3 134.425	SALT LAKE CITY APP CON 120.9 322.3	CLNC DEL 127.0	UNICOM 122.7 (CTAF) 0
--------------------------	--	--------------------------	---------------------------------



ELEV 4606	TDZE 4606
-----------	-----------

All arrivals descend to 10000 in FFU VORTAC holding pattern before departing FFU VORTAC.



CATEGORY	A	B	C	D
LPV DA		4881-7/8	275 (300-7/8)	
LNAV/VNAV DA		5022-1 1/2	416 (500-1 1/2)	
LNAV MDA	5040-1	434 (500-1)	5040-1 1/4	434 (500-1 1/4)
CIRCLING	5160-1 554 (600-1)	5360-1 754 (800-1)	5780-3 1174 (1200-3)	6040-3 1434 (1500-3)

SW-4, 26 DEC 2024 to 23 JAN 2025

SW-4, 26 DEC 2024 to 23 JAN 2025