

(SVALY1.FFU) 22083

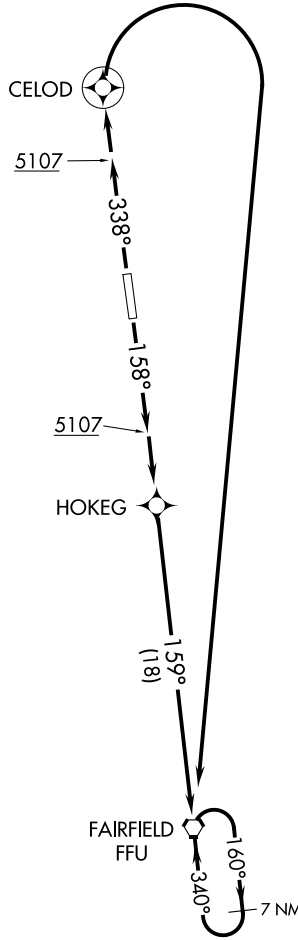
SOUTH VALLEY ONE DEPARTURE (RNAV)

AL-366 (FAA)

SOUTH VALLEY RGNL (U42)
SALT LAKE CITY, UTAH

SALT LAKE CITY DEP CON
120.9 322.3
CLNC DEL
127.0
UNICOM
122.7 (CTAF)
AWOS-3
134.425

**TOP ALTITUDE:
9000**



NOTE: RNAV 1.
NOTE: GPS required.

TAKEOFF MINIMUMS

Rwy 16: Standard with minimum climb of 300' per NM to 7800.
Rwy 34: Standard with minimum climb of 495' per NM to 9000.

NOTE: Chart not to scale.



DEPARTURE ROUTE DESCRIPTION

TAKEOFF RUNWAY 16: Climb heading 158° to 5107, then climb to 9000 direct HOKEG, and on track 159° to FFU VORTAC and hold, thence. . . .

TAKEOFF RUNWAY 34: Climb heading 338° to 5107, then climb to 9000 direct CELOD, and right turn direct FFU VORTAC and hold, thence. . . .

. . . maintain 9000. Expect further clearance to filed altitude and route within 10 minutes after departure.

SOUTH VALLEY ONE DEPARTURE (RNAV)

(SVALY1.FFU) 01FEB18

SALT LAKE CITY, UTAH
SOUTH VALLEY RGNL (U42)

SW-4, 26 DEC 2024 to 23 JAN 2025

SW-4, 26 DEC 2024 to 23 JAN 2025