

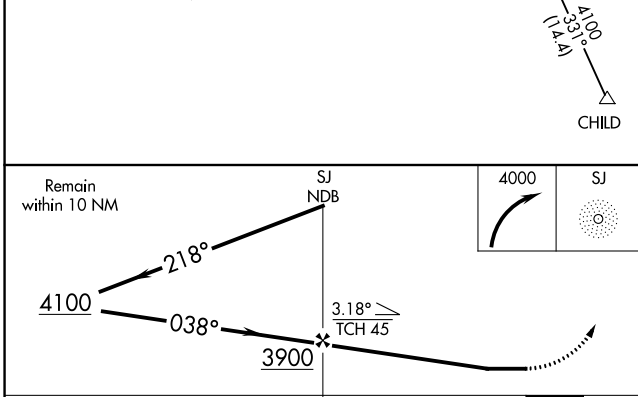
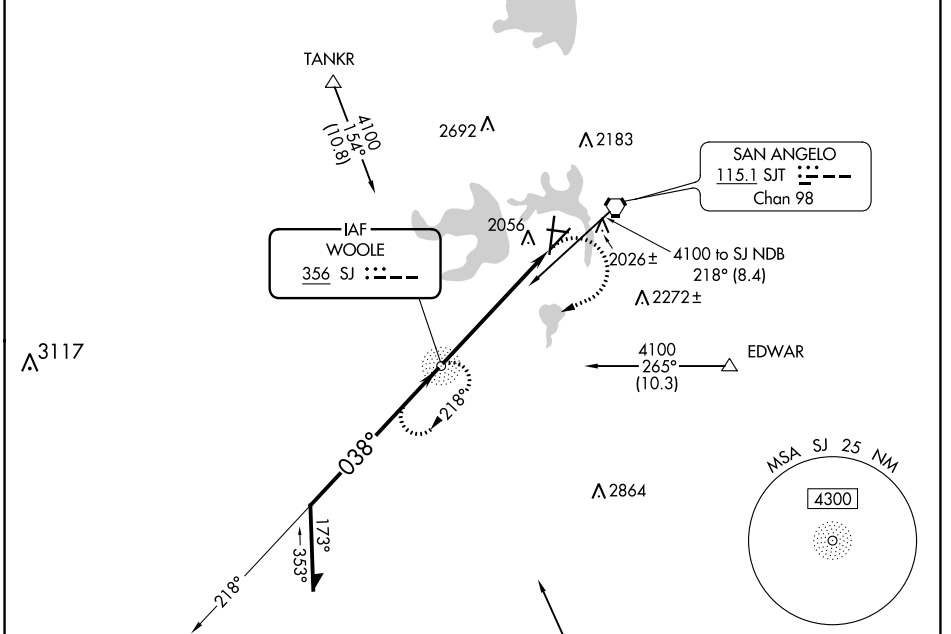
NDB SJ <b>356</b>	APP CRS <b>038°</b>	Rwy Idg TDZE Apt Elev	<b>5940</b> <b>1917</b> <b>1919</b>
----------------------	------------------------	-----------------------------	---

# NDB RWY 3

SAN ANGELO RGNL/MATHIS FLD (SJT)

<p>For inop ALS, increase Cat A/B visibility to RVR 5500, and Cat C/D to 2 SM.</p>		<p>MISSED APPROACH: Climbing right turn to 4000 direct SJ NDB and hold.</p>		
			<p>ATIS <b>128.45 319.0</b></p>	<p>SAN ANGELO APP CON ★ <b>125.35 354.1</b></p>

ATIS <b>128.45 319.0</b>	SAN ANGELO APP CON ★ <b>125.35 354.1</b>	MATHIS TOWER ★ <b>118.3 (CTAF) 284.7</b>	GND CON <b>121.9 348.6</b>	UNICOM <b>122.95</b>
-----------------------------	---	---	-------------------------------	-------------------------



ELEV 1919	<b>D</b>	TDZE 1917
MIRL Rwy 9-27 and 18-36 $\bullet$		
HIRL Rwy 3-21 $\bullet$		
REIL Rwy 18 $\bullet$		

TWR 1990  $\star$

81

0.3% UP

4406 X 75

8054 X 150

0.4% UP

5940 X 150

36

0.3% DOWN

038° 5.7 NM from FAF

FAF to MAP 5.7 NM

Knots	60	90	120	150	180
Min:Sec	5:42	3:48	2:51	2:17	1:54

CATEGORY	A	B	C	D
S-3	2640/40	723 (800-3/4)	2640-1 5/8	723 (800-1%)
<b>C</b> CIRCLING	2640-1	721 (800-1)	2640-2	2700-2 1/2 781 (800-2 1/2)

SC-3, 26 DEC 2024 to 23 JAN 2025

SC-3, 26 DEC 2024 to 23 JAN 2025