

# ALAMO FOUR DEPARTURE

**TOP ALTITUDE:  
5000**

RADAR required.

SAN ANTONIO DEP CON  
125.1 307.0 (Rwys 04/22/31)  
127.1 269.1 (Rwy 13)  
D-ATIS  
118.9  
CLNC DEL  
126.7  
CPDLC  
GND CON  
121.9 348.6  
SAN ANTONIO TOWER  
119.8 257.8

### TAKEOFF MINIMUMS

Rwys 4, 13L/R, 22, 31L/R: Standard.

COWBOY  
116.2 CVE  
Chan 109

BROWNWOOD  
113.55 BWD  
Chan 82 (Y)

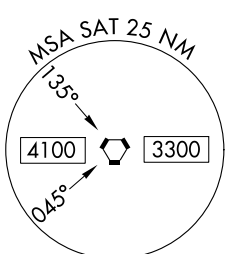
GOOCH SPRINGS  
112.5 AGJ  
Chan 72

STONEWALL  
113.8 STV  
Chan 85

CENTEX  
112.8 CWK  
Chan 75

SAN ANTONIO  
116.8 SAT  
Chan 115

NOTE: GOBBY Transition: Right turn at GOBBY NA for ACFT REQ FL240 and ABV.  
NOTE: HENLY Transition: Right turn at HENLY NA for ACFT REQ FL240 and ABV.



(CONTINUED ON FOLLOWING PAGE)

NOTE: Chart not to scale.

# ALAMO FOUR DEPARTURE

SC-3, 26 DEC 2024 to 23 JAN 2025

SC-3, 26 DEC 2024 to 23 JAN 2025

# ALAMO FOUR DEPARTURE



## DEPARTURE ROUTE DESCRIPTION

TAKEOFF ALL RUNWAYS: Climb on assigned heading for RADAR vectors to SAT VORTAC, then on transition/route. Maintain 5000. Expect filed altitude 10 minutes after departure.

GOBBY TRANSITION (ALAMO4.GOBBY): From over SAT VORTAC on SAT R-002 to GOBBY.

GOOCH SPRINGS TRANSITION (ALAMO4.AGJ): From over SAT VORTAC on SAT R-002 to GOBBY, then on SAT R-002 and AGJ R-185 to AGJ VORTAC.

HENLY TRANSITION (ALAMO4.HENLY): From over SAT VORTAC on SAT R-359 to HENLY.

JUMBO TRANSITION (ALAMO4.JUMBO): From over SAT VORTAC on SAT R-359 to JUMBO.

SC-3, 26 DEC 2024 to 23 JAN 2025

SC-3, 26 DEC 2024 to 23 JAN 2025