

RNAV 1 - DME/DME/IRU or GPS.

RADAR required.

See following page for Arrival Routes	
CRVZA	
17000	250K
11000	

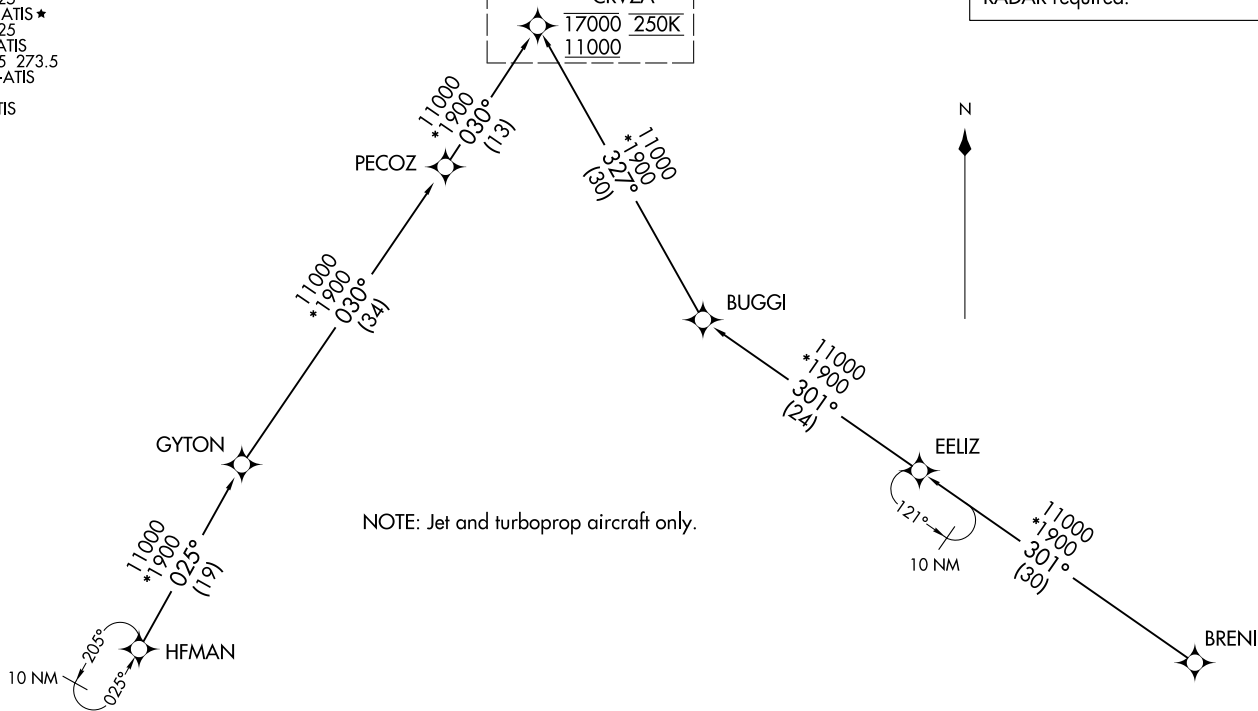


(CRVZA.CRVZA1) 25JAN24

CRVZA ONE ARRIVAL (RNAV) Transition Routes

SAN ANTONIO, TEXAS

SAN ANTONIO APP CON  
 125.7 290.225  
 BAZ ATIS  
 119.325  
 KRND ATIS ★  
 290.525  
 KSKF ATIS  
 120.45 273.5  
 SAT D-ATIS  
 118.9  
 SSF ATIS  
 128.8



NOTE: Jet and turboprop aircraft only.

BRENI TRANSITION (BRENI.CRVZA1)  
EELIZ TRANSITION (EELIZ.CRVZA1)  
HFMAN TRANSITION (HFMAN.CRVZA1)

(CONTINUED ON FOLLOWING PAGE)

NOTE: Chart not to scale.

(CRVZA.CRVZA1) 24025

AL-369 (FAA)  
CRVZA ONE ARRIVAL (RNAV) Transition Routes

SAN ANTONIO, TEXAS

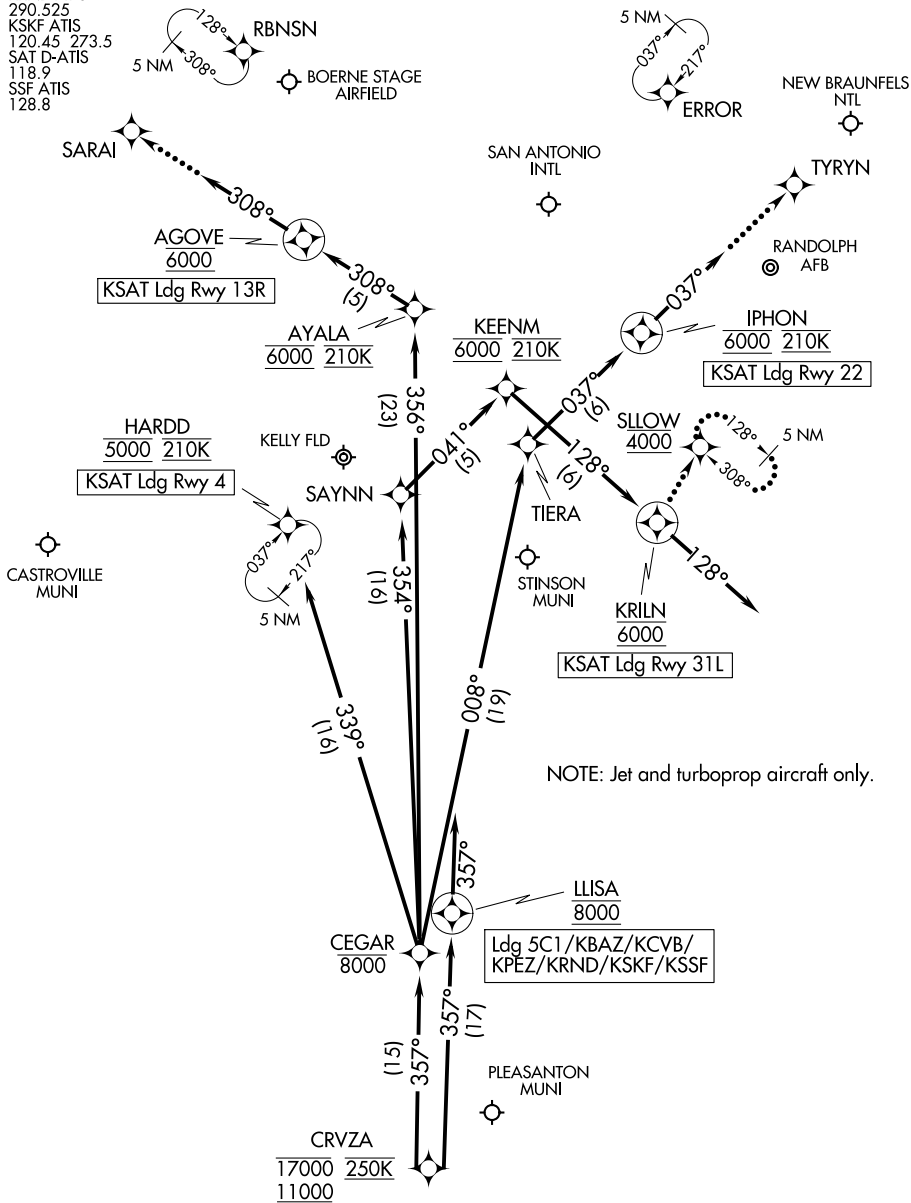
# CRVZA ONE ARRIVAL (RNAV) Arrival Routes

SAN ANTONIO, TEXAS

SAN ANTONIO APP CON  
 125.7 290.225  
 BAZ ATIS  
 119.325  
 KRND ATIS ★  
 290.525  
 KSKF ATIS  
 120.45 273.5  
 SAT D-ATIS  
 118.9  
 SSF ATIS  
 128.8

RNAV 1 - DME/DME/IRU or GPS.

RADAR required.



NOTE: Chart not to scale.

(CONTINUED ON FOLLOWING PAGE)

# CRVZA ONE ARRIVAL (RNAV) Arrival Routes

SAN ANTONIO, TEXAS

ARRIVAL ROUTE DESCRIPTION

SAN ANTONIO INTL (KSAT): From CRVZA on track 357° to cross CEGAR at or below 8000.

LANDING KSAT RUNWAY 4: From CEGAR on track 339° to cross HARDD at 5000 and at 210K. Expect ILS or LOC RWY 4 approach.

LANDING KSAT RUNWAY 13R: From CEGAR on track 356° to cross AYALA at 6000 and at 210K, then on track 308° to cross AGOVE at 6000, then on track 308°. Expect RADAR vectors to final approach course.

LANDING KSAT RUNWAY 22: From CEGAR on track 008° to TIERA, then on track 037° to cross IPHON at 6000 and at 210K, then on track 037°. Expect RADAR vectors to final approach course.

LANDING KSAT RUNWAY 31L: From CEGAR on track 354° to SAYNN, then on track 041° to cross KEENM at 6000 and at 210K, then on track 128° to cross KRILN at 6000, then on track 128°. Expect RADAR vectors to final approach course.

LANDING KSKF/KBAZ/KCVB/KSSF/KPEZ/5C1/KRND: From CRVZA on track 357° to cross LLISA at 8000, then on track 357°. Expect RADAR vectors to final approach course.

LOST COMMUNICATIONS

KSAT RUNWAY 13R: After AGOVE proceed to SARAI, then on ILS or LOC RWY 13R or RNAV (GPS) Y RWY 13R approach.

KSAT RUNWAY 22: After IPHON proceed to TYRYN, then on RNAV (GPS) Y RWY 22 approach.

KSAT RUNWAY 31L: After KRILN proceed to SLOW at 4000 and hold.

SC-3, 26 DEC 2024 to 23 JAN 2025

SC-3, 26 DEC 2024 to 23 JAN 2025