

LOC/DME I-ANT <b>110.9</b> Chan <b>46</b>	APP CRS <b>128°</b>	Rwy 13R Idg <b>8502</b> TDZE <b>809</b> Apt Elev <b>809</b>
---	------------------------	---

# ILS RWY 13R (CAT II)

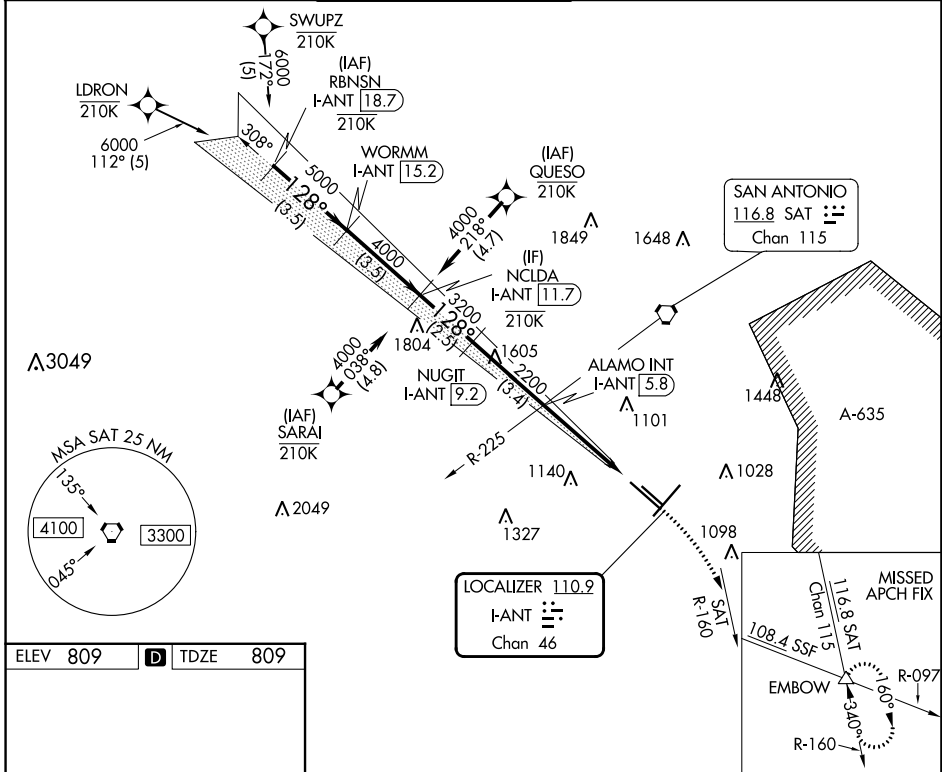
## SAN ANTONIO INTL (SAT)

RNP APCH-GPS. From LDRON, SWUPZ, SARAI, QUESO.  
 RNAV 1-GPS or RADAR required for procedure entry. DME required.

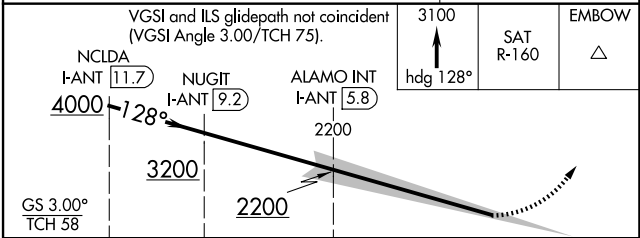
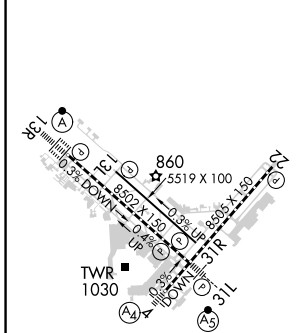
ALSF-2

MISSED APPROACH: Climb to 3100 on heading 128° and SAT VORTAC R-160 to EMBOW INT and hold.

D-ATIS <b>118.9</b>	SAN ANTONIO APP CON <b>125.1 307.0</b>	SAN ANTONIO TOWER <b>119.8 257.8</b>	GND CON <b>121.9 348.6</b>	CLNC DEL <b>126.7</b>	CPDLC
------------------------	---	---	-------------------------------	--------------------------	-------



ELEV <b>809</b>	<b>D</b>	TDZE <b>809</b>
-----------------	----------	-----------------



CATEGORY	A	B	C	D
S-ILS 13R	RA 104/12 100 DA 909			

**CATEGORY II ILS - SPECIAL AIRCREW & AIRCRAFT CERTIFICATION REQUIRED**

TDZ/CL Rwy 13R  
 REIL Rws 13L, 22 and 31R  
 HIRL Rws 4-22 and 13R-31L  
 MIRL Rwy 13L-31R

SC-3, 26 DEC 2024 to 23 JAN 2025

SC-3, 26 DEC 2024 to 23 JAN 2025