

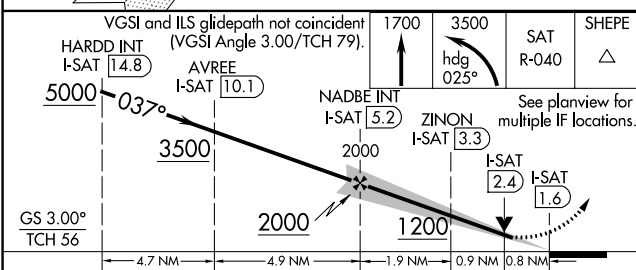
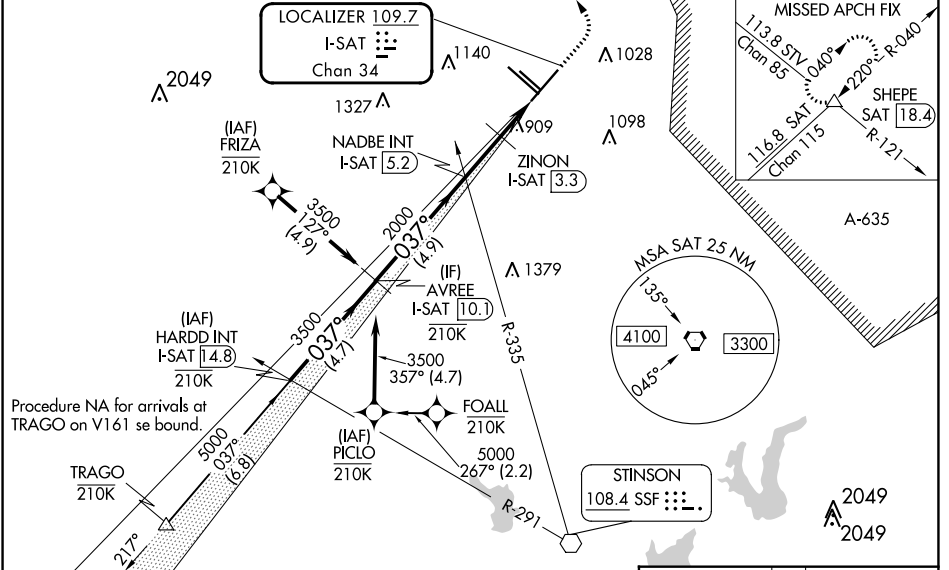
LOC/DME I-SAT 109.7 Chan 34	APP CRS 037°	Rwy ldg 8505 TDZE 786 Apt Elev 809
---	------------------------	---

ILS or LOC RWY 4

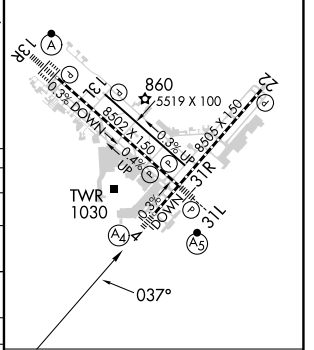
SAN ANTONIO INTL (SAT)

RNP APCH-GPS. From TRAGO or PICLO or FRIZA.		MALS ⊕	MISSED APPROACH: Climb to 1700 then climbing left turn to 3500 on heading 025° and on SAT VORTAC R-040 to SHEPE INT/SAT 18.4 DME and hold.
Aircraft not GPS equipped - RADAR required for procedure entry.			
<p>⚠ NA Circling NA northwest of Rws 4 and 13R. Autopilot coupled approach NA below 1189. Inop table does not apply to S-ILS 4. For inop ALS, increase S-LOC 4 Cat C/D visibility to RVR 6000.</p>			

D-ATIS 118.9	SAN ANTONIO APP CON 125.1 307.0	SAN ANTONIO TOWER 119.8 257.8	GND CON 121.9 348.6	CLNC DEL 126.7	CPDLC
------------------------	---	---	-------------------------------	--------------------------	-------



ELEV 809	TDZE 786
TDZ/CL Rwy 13R	
REIL Rws 13L, 22 and 31R	
HIRL Rws 4-22 and 13R-31L	
MIRL Rwy 13L-31R	



CATEGORY	A	B	C	D
S-ILS 4	986/40		200 (200-¾)	
S-LOC 4	1200/40	414 (400-¾)	1200/50	414 (400-1)
CIRCLING	1280-1	1340-1	1420-1¾	1520-2¼
	471 (500-1)	531 (600-1)	611 (700-1¾)	711 (800-2¼)
ZINON FIX MINIMUMS (DME REQUIRED)				
S-LOC 4	1120/40		334 (400-¾)	
CIRCLING	1280-1	1340-1	1420-1¾	1520-2¼
	471 (500-1)	531 (600-1)	611 (700-1¾)	711 (800-2¼)

FAF to MAP 3.6 NM					
Knots	60	90	120	150	180
Min:Sec	3:36	2:24	1:48	1:26	1:12

SC-3, 26 DEC 2024 to 23 JAN 2025

SC-3, 26 DEC 2024 to 23 JAN 2025