

RNAV (RNP) Z RWY 13R

SAN ANTONIO INTL (SAT)

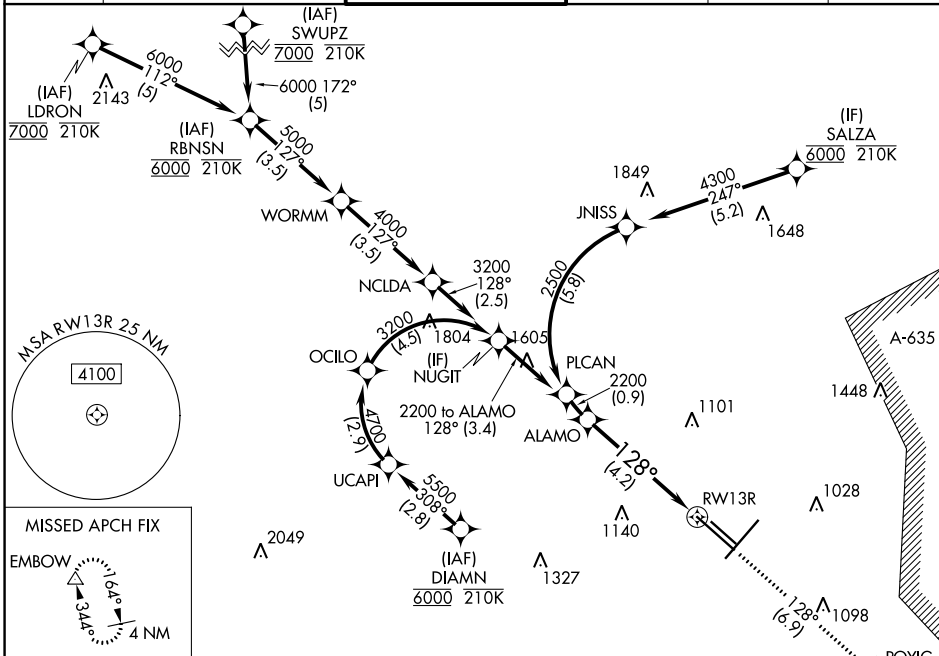
APP CRS	Rwy Idg	8502
128°	TDZE	809
	Apt Elev	809

RNP AR APCH - GPS.

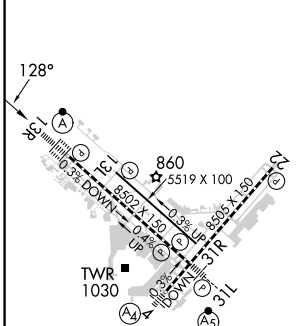
For uncompensated Baro-VNAV systems, procedure NA below -5°C or above 54°C. For inop ALS, increase RNP 0.3 all Cats visibility to RVR 6000.

ALS-F-2 MISSED APPROACH: (Do not exceed 210K until POYIG) Climb to 3100 on track 128° to POYIG and track 171° to EMBOW and hold.

D-ATIS	SAN ANTONIO APP CON	SAN ANTONIO TOWER	GND CON	CLNC DEL	CPDLC
118.9	125.1 307.0	119.8 257.8	121.9 348.6	126.7	



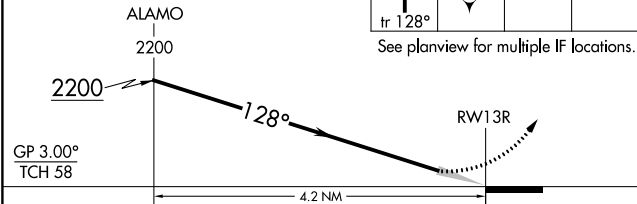
ELEV	809	D	TDZE	809
------	------------	---	------	------------



VGSI and RNAV glidepath not coincident (VGSI Angle 3.00/TCH 75).

3100	POYIG	EMBOW
tr 128°	tr 171°	

See planview for multiple IF locations.



CATEGORY	A	B	C	D
RNP 0.15 DA		1137/26	328 (400-½)	
RNP 0.30 DA		1218/40	409 (500-¾)	

TDZ/CL Rwy 13R
 REIL Rwy 13L, 22 and 31R
 HIRL Rwy 4-22 and 13R-31L
 MIRL Rwy 13L-31R