

# RNAV (RNP) Z RWY 31L


SAN ANTONIO INTL (SAT)

APP CRS	Rwy Idg	<b>8502</b>
<b>308°</b>	TDZE	<b>790</b>
	Apt Elev	<b>809</b>

**RNP AR APCH - GPS.**

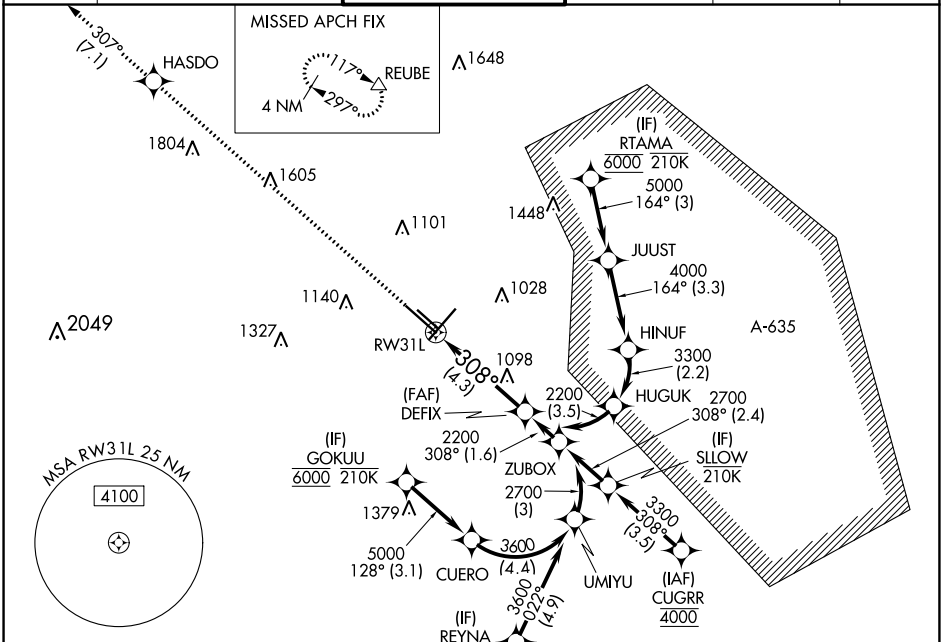
▼ For uncompensated Baro-VNAV systems, procedure NA below -5°C or above 54°C. For inop ALS, increase RNP 0.15 all Cats visibility to RVR 5500, increase RNP 0.30 all Cats visibility to RVR 6000.

**MALSR**

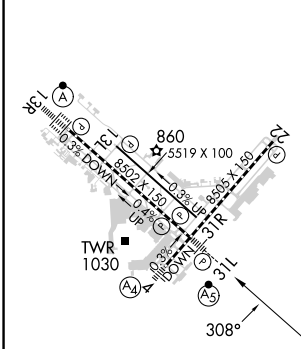


**MISSED APPROACH:** Climb to 4200 direct HASDO and track 307° to REUBE and hold.

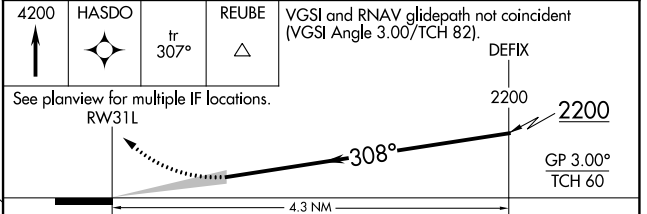
D-ATIS	SAN ANTONIO APP CON	SAN ANTONIO TOWER	GND CON	CLNC DEL	CPDLC
<b>118.9</b>	<b>125.1 307.0</b>	<b>119.8 257.8</b>	<b>121.9 348.6</b>	<b>126.7</b>	



ELEV	<b>809</b>	<b>D</b>	TDZE	<b>790</b>
------	------------	----------	------	------------



TDZ/CL Rwy 13R  
REIL Rwy 13L, 22 and 31R  
HIRL Rwy 4-22 and 13R-31L  
MIRL Rwy 13L-31R



CATEGORY	A	B	C	D
RNP 0.15 DA		1144/30	354 (400-¾)	
RNP 0.30 DA		1200/40	410 (400-¾)	

## AUTHORIZATION REQUIRED

SC-3, 26 DEC 2024 to 23 JAN 2025

SC-3, 26 DEC 2024 to 23 JAN 2025