

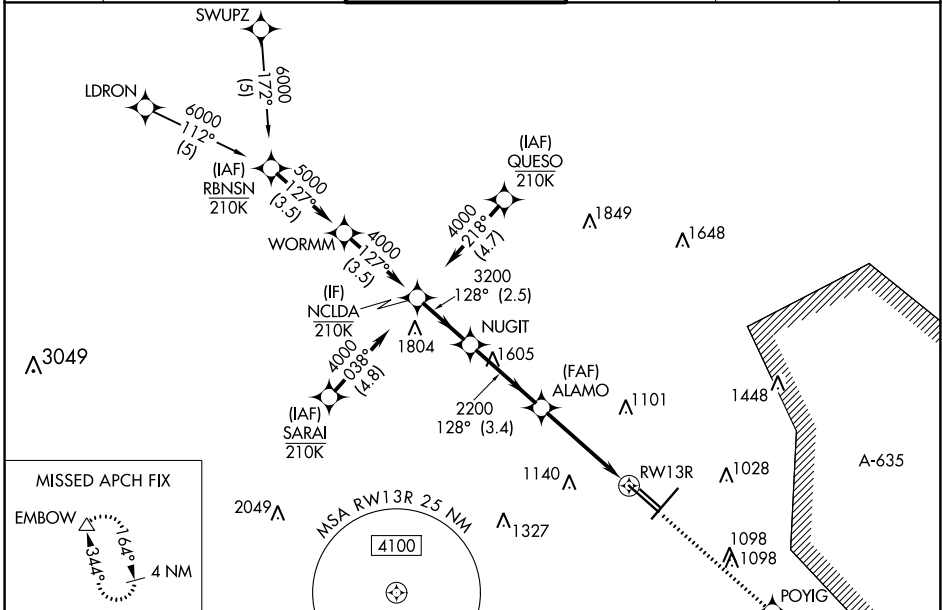
WAAS CH <b>82409</b> <b>W13A</b>	APP CRS <b>128°</b>	Rwy Idg TDZE <b>809</b> Apt Elev <b>809</b>	<b>8502</b>
----------------------------------------	------------------------	---------------------------------------------------	-------------

# RNAV (GPS) Y RWY 13R

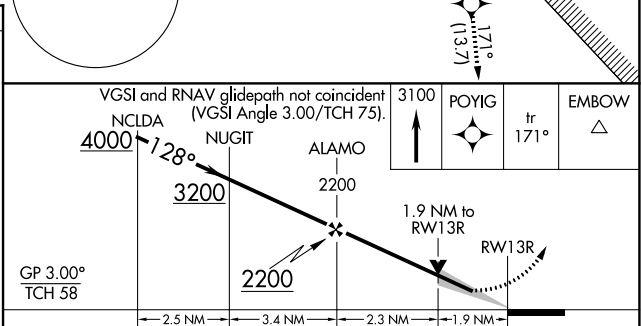
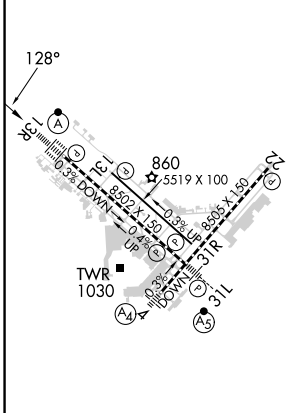
SAN ANTONIO INTL (SAT)

RNP APCH - GPS.		ALSF-2 	MISSED APPROACH: Climb to 3100 direct POYIG and on track 171° to EMBOW and hold.
Circling NA northwest of Rwy 4 and 13R. For uncompensated Baro-VNAV systems, LNAV/VNAV NA below -5°C or above 54°C. For inop ALS, increase LNAV/VNAV all Cats visibility to RVR 6000 and LNAV Cats C and D visibility to 1½ SM.			

D-ATIS <b>118.9</b>	SAN ANTONIO APP CON <b>125.1 307.0</b>	SAN ANTONIO TOWER <b>119.8 257.8</b>	GND CON <b>121.9 348.6</b>	CLNC DEL <b>126.7</b>	CPDLC
------------------------	-------------------------------------------	-----------------------------------------	-------------------------------	--------------------------	-------



ELEV <b>809</b>	<b>D</b>	TDZE <b>809</b>
-----------------	----------	-----------------



CATEGORY	A	B	C	D
LPV DA		1009/18	200 (200-½)	
LNAV/VNAV DA		1221/40	412 (500-¾)	
LNAV MDA	1480/24	671 (700-½)	1480-1½	671 (700-1½)
CIRCLING	1480-1	671 (700-1)	1480-2 671 (700-2)	1520-2¼ 711 (800-2¼)

TDZ/CL Rwy 13R  
REIL Rwy 13L, 22 and 31R  
HIRL Rwy 4-22 and 13R-31L  
MIRL Rwy 13L-31R

SC-3, 26 DEC 2024 to 23 JAN 2025

SC-3, 26 DEC 2024 to 23 JAN 2025