

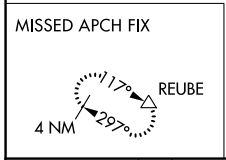
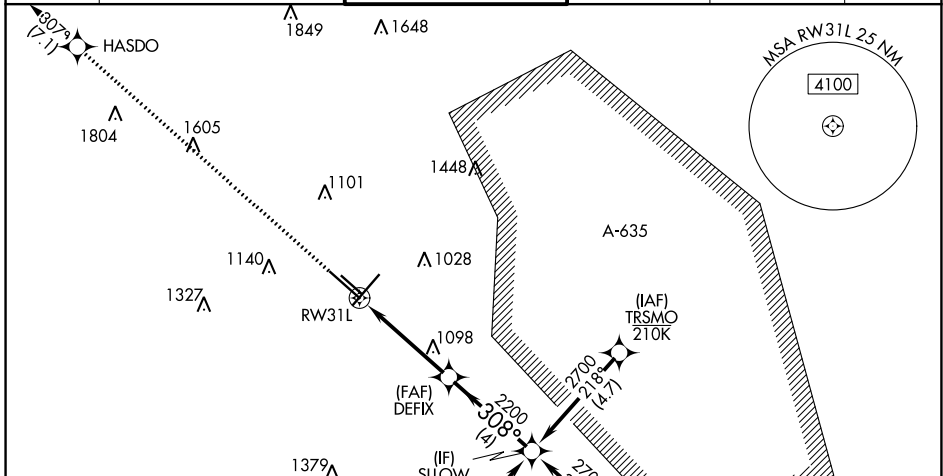
WAAS CH <b>61209</b> <b>W31A</b>	APP CRS <b>308°</b>	Rwy Idg <b>8502</b> TDZE <b>790</b> Apt Elev <b>809</b>
--	------------------------	---

# RNAV (GPS) Y RWY 31L

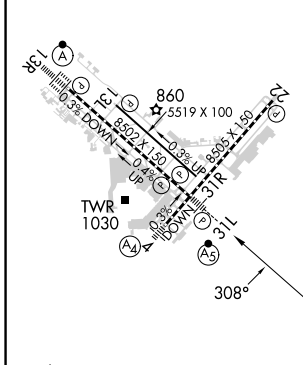
SAN ANTONIO INTL (SAT)

RNP APCH - GPS. ▼ For uncompensated Baro-VNAV systems, LNAV/VNAV NA below -5°C or above 54°C. Circling NA northwest of Rwy 4 and 13R. ▲ * RVR 1800 authorized with use of FD or AP or HUD to DA.	MALSR 45 45	MISSED APPROACH: Climb to 4200 direct HASDO and track 307° to REUBE and hold.
--	-------------------	---

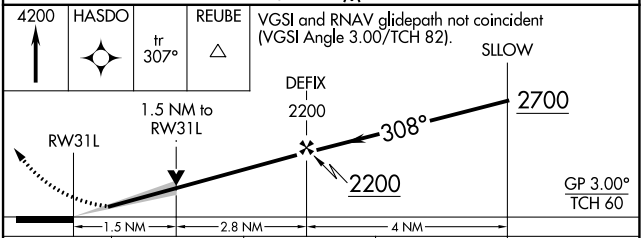
D-ATIS <b>118.9</b>	SAN ANTONIO APP CON <b>125.1 307.0</b>	SAN ANTONIO TOWER <b>119.8 257.8</b>	GND CON <b>121.9 348.6</b>	CLNC DEL <b>126.7</b>	CPDLC
------------------------	---	---	-------------------------------	--------------------------	-------



ELEV <b>809</b>	<b>D</b>	TDZE <b>790</b>
-----------------	----------	-----------------



TDZ/CL Rwy 13R  
REIL Rwy 13L, 22 and 31R  
HIRL Rwy 4-22 and 13R-31L  
MIRL Rwy 13L-31R



CATEGORY	A	B	C	D
LPV DA *		990/24	200 (200-½)	
LNAV/VNAV DA		1220/40	430 (500-¾)	
LNAV MDA	1360/24	570 (600-½)	1360/60	570 (600-1¼)
<b>C</b> CIRCLING	1360-1	551 (600-1)	1420-1¾ 611 (700-1¾)	1520-2¼ 711 (800-2¼)