

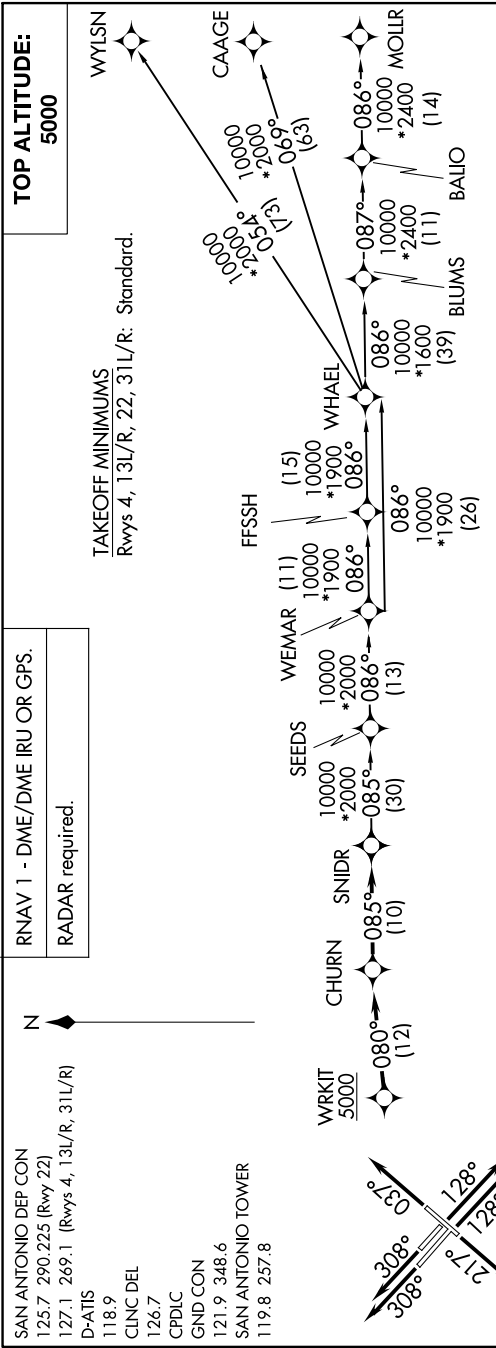
(SNIDR1.SNIDR) 24081

AL-369 (FAA)

SAN ANTONIO INTL (SAT)  
SAN ANTONIO, TEXAS

# SNIDR ONE DEPARTURE (RNAV)

SC-3, 26 DEC 2024 to 23 JAN 2025



RNAV 1 - DME/DME IRU OR GPS.  
RADAR required.

SAN ANTONIO DEP CON  
125.7 290.225 (Rwy 22)  
127.1 269.1 (Rwys 4, 13L/R, 31L/R)  
D-ATIS 118.9  
CLNC DEL 126.7  
CPDIC 126.7  
GND CON 121.9 348.6  
SAN ANTONIO TOWER 119.8 257.8

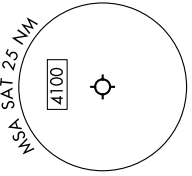
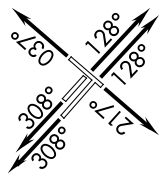
# SNIDR ONE DEPARTURE (RNAV)

(SNIDR1.SNIDR) 25JAN24

## DEPARTURE ROUTE DESCRIPTION

TAKEOFF RUNWAY 4: Climb on heading 037° or as assigned by ATC, for vectors to WRKIT, thence. . . .  
 TAKEOFF RUNWAY 13L/R: Climb on heading 128° or as assigned by ATC, for vectors to WRKIT, thence. . . .  
 TAKEOFF RUNWAY 22: Climb on heading 217° or as assigned by ATC, for vectors to WRKIT, thence. . . .  
 TAKEOFF RUNWAY 31L/R: Climb on heading 308° or as assigned by ATC, for vectors to WRKIT, thence. . . .  
 . . . on track 080° to CHURN, then on track 085° to SNIDR, then on transition. Maintain 5000.

- BLUMS TRANSITION (SNIDR1.BLUMS)
- CAAGE TRANSITION (SNIDR1.CAAGE)
- FFSSH TRANSITION (SNIDR1.FFSSH)
- MOLLR TRANSITION (SNIDR1.MOLLR)
- SEEDS TRANSITION (SNIDR1.SEEDS)
- WEMAR TRANSITION (SNIDR1.WEMAR)
- WHAEL TRANSITION (SNIDR1.WHAEL)
- WYLSN TRANSITION (SNIDR1.WYLSN)



Note: Chart not to scale.

SAN ANTONIO, TEXAS  
SAN ANTONIO INTL (SAT)

SC-3, 26 DEC 2024 to 23 JAN 2025