

SAN ANTONIO, TEXAS

HI-ILS or LOC/DME Z RWY 16

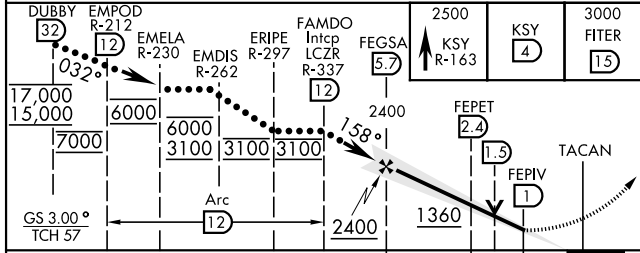
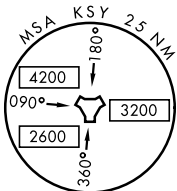
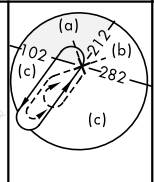
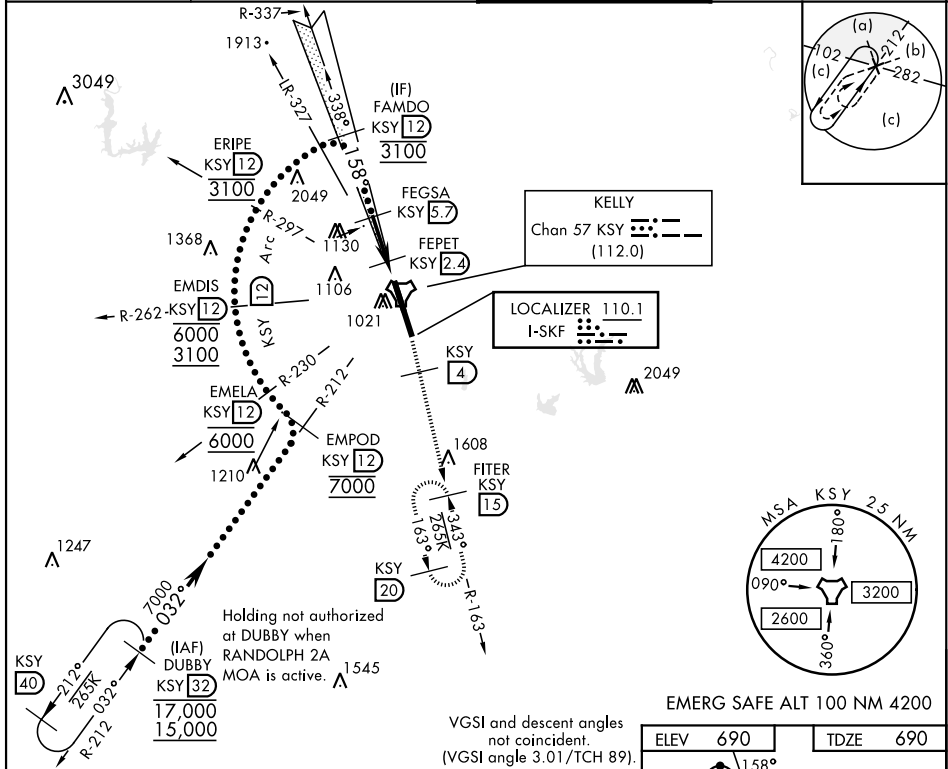
LOC I-SKF 110.1	APCH CRS 158°	Rwy ldg 11,550 TDZE 690 Arprt Elev 690	AL-371 [USAF]	KELLY FLD (KSKF)
---------------------------	-------------------------	---	---------------	------------------

▼ *When ALS inop, increase RVR to 40 and vis to 3/4 mile.
 **When ALS inop, increase RVR to 60 and vis to 1 1/2 miles.
 ***Circling not authorized E of Rwy 16-34.

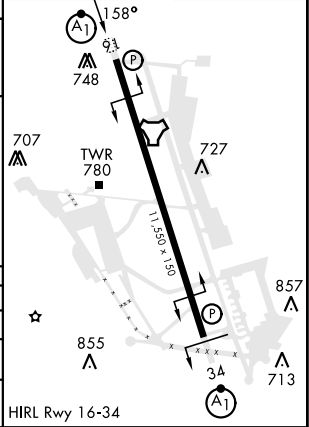


MISSED APPROACH: Climb to 2500 via KSY R-163 until 4 DME, then continue climb to 3000 to FITER/1.5 DME and hold.

ATIS 120.45 273.5	SAN ANTONIO APP CON 118.05 353.5	KELLY TOWER 124.3 322.35	GND CON 121.8 289.4
-----------------------------	--	------------------------------------	-------------------------------



ELEV 690	TDZE 690
----------	----------



CATEGORY	C	D	E
S-ILS 16 *	890/24	200	(200-1/2)
S-LOC/ DME 16 **	1080/35	390	(400-5/8)
CIRCLING ***	1340-1 3/4 650 (700-13/4)	1400-2 1/4 710 (800-21/4)	1900-3 1210 (1300-3)

SAN ANTONIO, TEXAS 29°23'N-98°35'W KELLY FLD (KSKF)

Amtd 2 29DEC22

HI-ILS or LOC/DME Z RWY 16

SC-3, 26 DEC 2024 to 23 JAN 2025

SC-3, 26 DEC 2024 to 23 JAN 2025