

# HI-TACAN Z RWY 16

TACAN KSY Chan <b>57</b>	APCH CRS <b>151°</b>	Rwy ldg <b>11,550</b> TDZE <b>690</b> Arpt Elev <b>690</b>
-----------------------------	-------------------------	--

AL-371 [USAF]

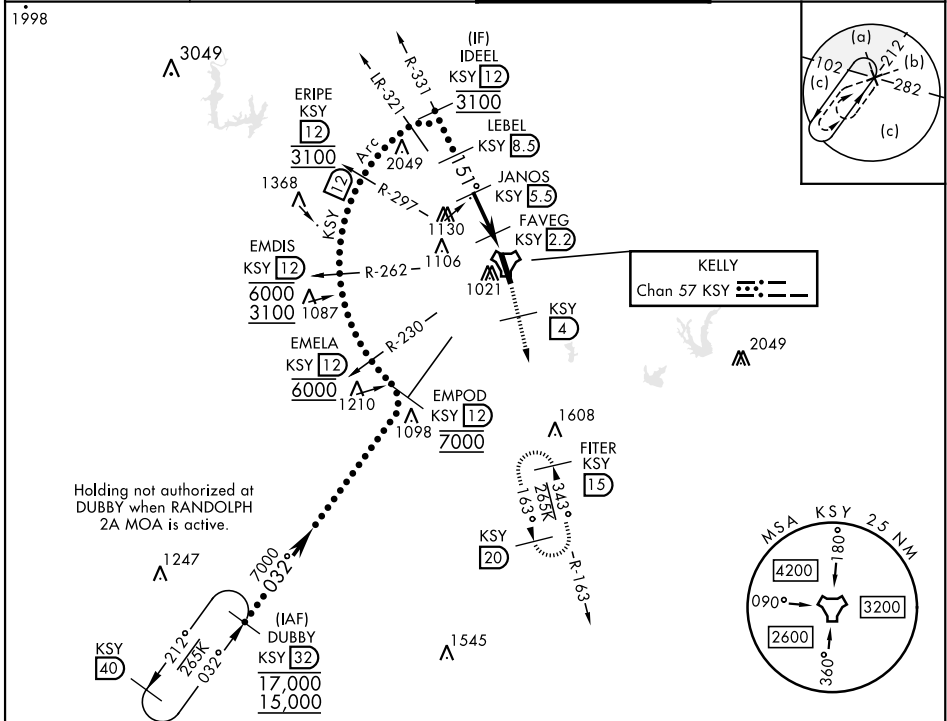
KELLY FLD (KSKF)

▼ \* When ALS inop, increase RVR to 60 and vis to 1½ miles.  
 \*\* Circling not authorized E of Rwy 16-34.



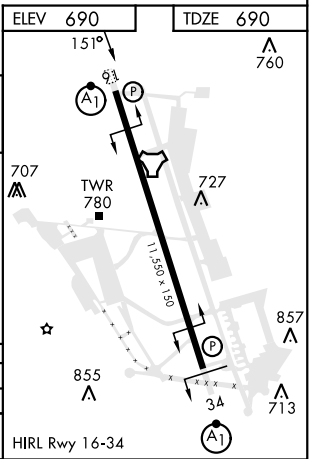
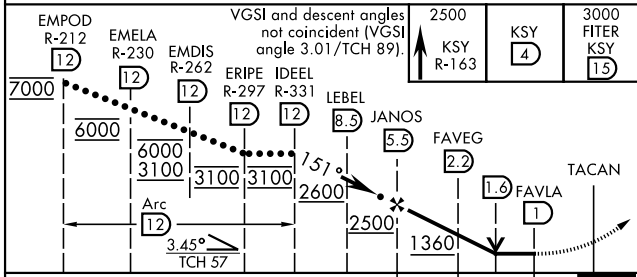
MISSED APPROACH: Climb to 2500 via KSY TACAN R-163 until 4 DME, then continue climb to 3000 to FITER/15 DME and hold.

ATIS <b>120.45 273.5</b>	SAN ANTONIO APP CON <b>118.05 353.5</b>	TOWER <b>124.3 322.35</b>	GND CON <b>121.8 289.4</b>
-----------------------------	--	------------------------------	-------------------------------



Holding not authorized at DUBBY when RANDOLPH 2A MOA is active.

EMERG SAFE ALT 100 NM 4200



CATEGORY	C	D	E
S-16*	1100/40	410	{500-34}
CIRCLING**	1340-134 650 (700-134)	1400-214 710 (800-214)	1900-3 1210 (1300-3)

# HI-TACAN Z RWY 16

SC-3, 26 DEC 2024 to 23 JAN 2025

SC-3, 26 DEC 2024 to 23 JAN 2025