

# TACAN Y RWY 16

TACAN KSY Chan 57	APCH CRS 151°	Rwy Idg 11,550 TDZE 690 Arprt Elev 690
----------------------	------------------	--

AL-371 [USAF]

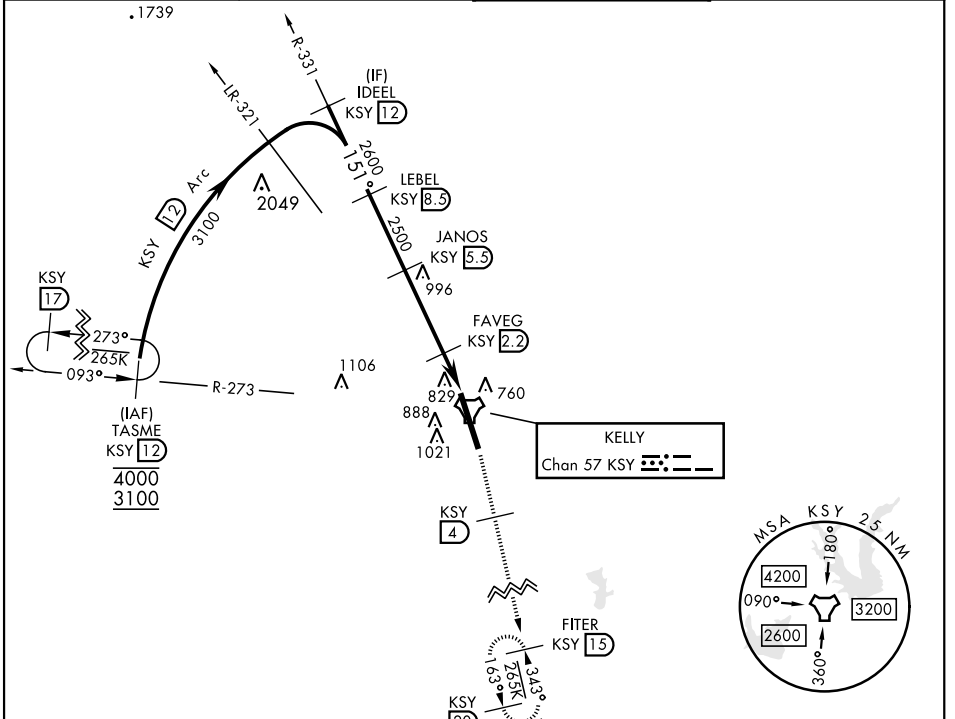
KELLY FLD (KSKF)

▼ \* When ALS inop, increase CAT AB RVR to 55 and vis to 1 mile, CAT CDE RVR to 60 and vis to 1½ miles.  
 \*\* Circling not authorized E of Rwy 16-34.

ALSF-1

MISSED APPROACH: Climb on 2500 via KSY R-163 until 4 DME, then climb to 3000 to FITER/ 15 DME and hold.

ATIS 120.45 273.5	SAN ANTONIO APP CON 118.05 353.5	TOWER 124.3 322.35	GND CON 121.8 289.4
----------------------	-------------------------------------	-----------------------	------------------------

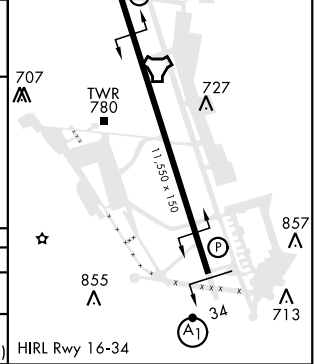


EMERG SAFE ALT 100 NM 4200

IDEEL 12	LEBEL 8.3	JANOS 5.3	FAVEG 2.2	FAVLA 1.0	TACAN
3100	2600	2500	1360		
3.3 NM		1.2 NM		0.5 NM	

ELEV 690	TDZE 690
----------	----------

	VGS1 and descent angles not coincident (VGS1 angle 3.01/TCH 89).		2500 KSY R-163	KSY 4	3000 FITER KSY 15
CATEGORY	A	B	C	D	E
S-16 *	1100/24 410 (500-½)		1100/40 410		(500-¾)
CIRCLING **	1200-1 510 (600-1)	1280-1 590 (600-1)	1340-1¾ 650 (700-1¾)	1400-2¼ 710 (800-2¼)	1900-3 1210 (1300-3)



# TACAN Y RWY 16

SC-3, 26 DEC 2024 to 23 JAN 2025

SC-3, 26 DEC 2024 to 23 JAN 2025