

TACAN Y RWY 34

| | | |
|----------------------|------------------|--|
| TACAN KSY Chan 57 | APCH CRS 343° | Rwy Idg 11,550 TDZE 660 Arprt Elev 690 |
|----------------------|------------------|--|

[USAF]

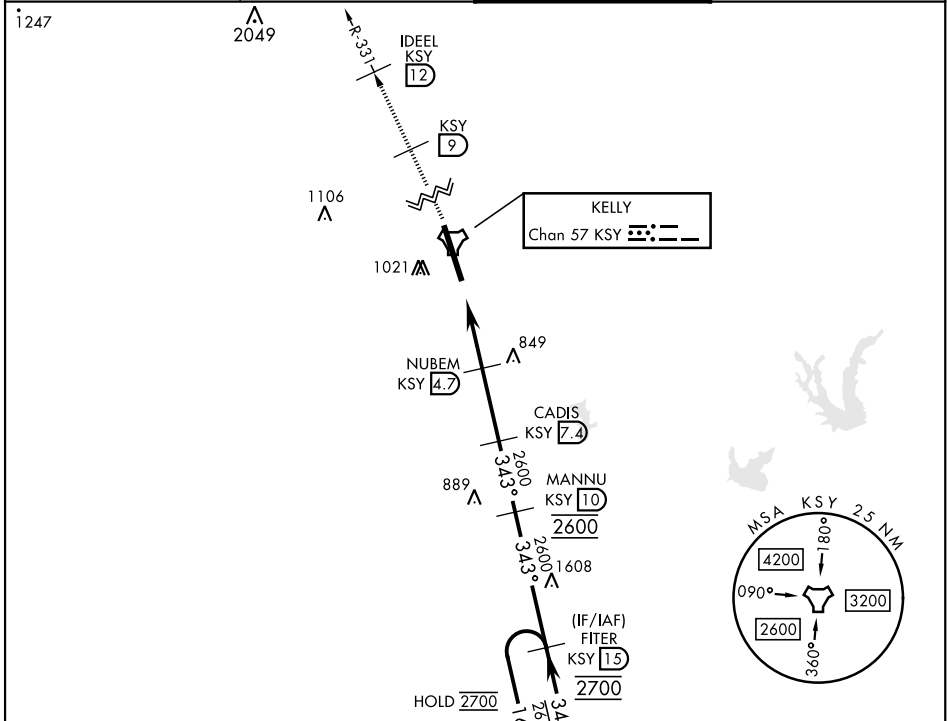
KELLY FLD (KSKF)

▼ * When ALS inop, increase CAT AB RVR to 55 vis to 1 mile, CAT CDE vis to 1¼ miles.
 ** Circling not authorized E of Rwy 16-34.



MISSED APPROACH: Climb to 2500 via KSY TACAN R-331 until 9 DME, cross 9 DME at 2500, then continue climb to 3100 to IDEEL/12 DME. Expect ATC instructions.

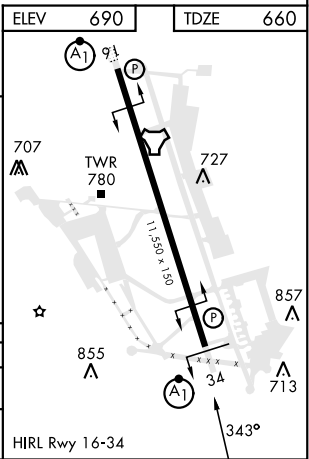
| | | | |
|-----------------------------|--|------------------------------|-------------------------------|
| ATIS 120.45 273.5 | SAN ANTONIO APP CON 118.05 353.5 | TOWER 124.3 322.35 | GND CON 121.8 289.4 |
|-----------------------------|--|------------------------------|-------------------------------|



SC-3, 26 DEC 2024 to 23 JAN 2025

SC-3, 26 DEC 2024 to 23 JAN 2025

| | | | | | |
|------------------------------|---------------------------|---|-------------------------|-------------------------|-------------------------|
| EMERG SAFE ALT 100 NM 4200 | | ELEV 690 | TDZE 660 | | |
| 2500 KSY R-331 [9] | 3100 IDEEL KSY [12] | CADIS KSY [7.4] MANNU KSY [10] FITER KSY [15] KSY [20] | | | |
| KSY TACAN FRSTY KSY [1.9] | NUBEM KSY [4.7] | 2600 2600 2700 | | | |
| 1740 2.89° TCH 60 | | VGSI and descent angles not coincident. [VGSI angle 3.02/TCH 93] | | | |
| CATEGORY | A | B | C | D | E |
| S-34 * | 1100/24 | 440 (500-½) | 1100/40 | 440 | (500-¾) |
| ** CIRCLING | 1200-1 510 (600-1) | 1280-1 590 (600-1) | 1340-1¼ 650 (700-1¾) | 1400-2¼ 710 (800-2¼) | 1900-3 1210 (1300-3) |
| HIRL Rwy 16-34 | | | | | |



TACAN Y RWY 34