

# BOWIE SEVEN DEPARTURE

ATIS  
128.8  
CLNC DEL (When twr closed)  
121.7  
GND CON  
121.7 379.9  
SAN ANTONIO DEP CON  
125.7 290.225  
STINSON TOWER\*  
118.2 379.9

SAN ANTONIO  
116.8 SAT  
Chan 115

COTULLA  
115.8 COT  
Chan 105

THREE RIVERS  
111.4 THX  
Chan 51

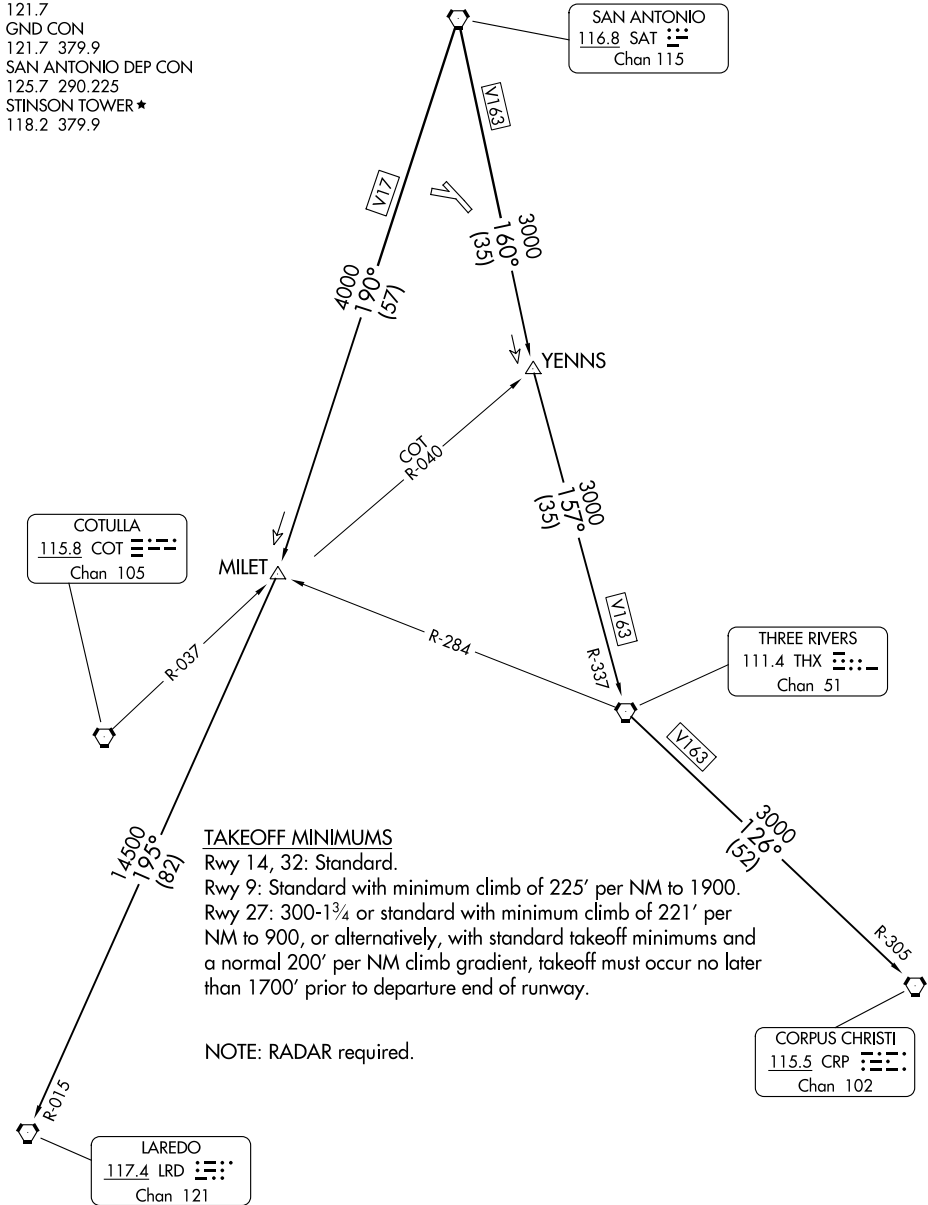
CORPUS CHRISTI  
115.5 CRP  
Chan 102

LAREDO  
117.4 LRD  
Chan 121

### TAKEOFF MINIMUMS

Rwy 14, 32: Standard.  
Rwy 9: Standard with minimum climb of 225' per NM to 1900.  
Rwy 27: 300-1<sup>3</sup>/<sub>4</sub> or standard with minimum climb of 221' per NM to 900, or alternatively, with standard takeoff minimums and a normal 200' per NM climb gradient, takeoff must occur no later than 1700' prior to departure end of runway.

NOTE: RADAR required.



NOTE: Chart not to scale

(CONTINUED ON FOLLOWING PAGE)

# BOWIE SEVEN DEPARTURE

# BOWIE SEVEN DEPARTURE



## DEPARTURE ROUTE DESCRIPTION

TAKEOFF RWYS 9, 14, 27, 32: Climb on assigned heading and altitude for RADAR vectors to SAT VORTAC, thence. . . .

. . . .on transition/route. Expect filed altitude 10 minutes after departure.

CORPUS CHRISTI TRANSITION (BOWIE7.CRP): From over SAT VORTAC on SAT R-160 to YENNS/SAT 35 DME, then on THX R-337 to THX VORTAC, then on THX R-126 and CRP R-305 to CRP VORTAC.

LAREDO TRANSITION (BOWIE7.LRD): From over SAT VORTAC on SAT R-190 to MILET/SAT 57 DME, then on LRD R-015 to LRD VORTAC.

SC-3, 26 DEC 2024 to 23 JAN 2025

SC-3, 26 DEC 2024 to 23 JAN 2025