

(TJANO1.TJANO) 24053

AL-372 (FAA)

STINSON MUNI (SSF)
SAN ANTONIO, TEXAS

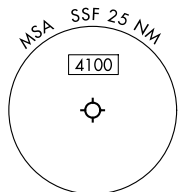
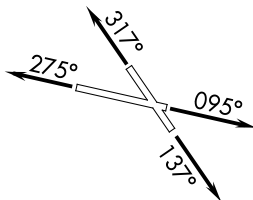
TJANO ONE DEPARTURE (RNAV)

SAN ANTONIO DEP CON
125.7 290.225
ATIS
128.8
CLNC DEL (When twr closed)
121.7
GND CON
121.7 379.9
STINSON TOWER*
118.2 379.9

RNAV 1 - DME/DME IRU or GPS.

RADAR required.

**TOP ALTITUDE:
ASSIGNED BY ATC**



LVACA
5000

NOTE: For non-GPS equipped aircraft,
THX and SAT DME must be operational.

TJANO

TAKEOFF MINIMUMS

- Rwy 9: Standard with minimum climb of 230'/NM to 1900.
- Rwy 14: Standard with minimum climb of 220'/NM to 1900.
- Rwy 27: 300-1% or standard with minimum climb of 230'/NM to 900, or alternatively, with standard takeoff minimums and a normal 200'/NM climb gradient, takeoff must occur no later than 1800' prior to DER.
- Rwy 32: Standard with minimum climb of 230'/NM to 1700.

TEEPY

DEPARTURE ROUTE DESCRIPTION

TAKEOFF RUNWAY 9: Climb on heading 095° or as assigned by ATC, for vectors to LVACA, thence. . .

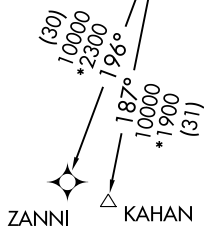
TAKEOFF RUNWAY 14: Climb on heading 137° or as assigned by ATC, for vectors to LVACA, thence. . .

TAKEOFF RUNWAY 27: Climb on heading 275° or as assigned by ATC, for vectors to LVACA, thence. . .

TAKEOFF RUNWAY 32: Climb on heading 317° or as assigned by ATC, for vectors to LVACA, thence. . .

. . .on track 205° to TJANO, then on Transition.
Maintain ATC assigned altitude.

KAHAN TRANSITION (TJANO1.KAHAN)
ZANNI TRANSITION (TJANO1.ZANNI)



Note: Chart not to scale.

TJANO ONE DEPARTURE (RNAV)
(TJANO1.TJANO) 25JAN24

SAN ANTONIO, TEXAS
STINSON MUNI (SSF)

SC-3, 26 DEC 2024 to 23 JAN 2025

SC-3, 26 DEC 2024 to 23 JAN 2025