

**BARET FIVE ARRIVAL**  
[BARET, BARET5] 08LAN15

SOCAL APP CON  
124.35 279.625  
KNZY ATIS\*  
317.8  
SAN D-ATIS  
134.8



NOTE: Turbojet aircraft only.  
NOTE: RADAR required.  
NOTE: When SAN arrivals are using Rwy 9, aircraft can expect to depart and re-enter the TCA southwest of PGY VORTAC.

TURBOJET VERTICAL NAVIGATION

PLANNING INFORMATION

TNP, EED and PKE transitions  
expect FL240 at SALTN  
expect 12000 at CARUL

OCEANSIDE  
115.3 OCN  
Chan 100

LOCALIZER  
I-SAN  
111.55  
Chan 52 (Y)

MISSION BAY  
117.8 MZB  
Chan 125

LOCALIZER  
I-UBR  
110.9  
Chan 46

JULIAN  
114.0 JUL  
Chan 87

TWENTYNINE PALMS  
114.2 TNP  
Chan 89

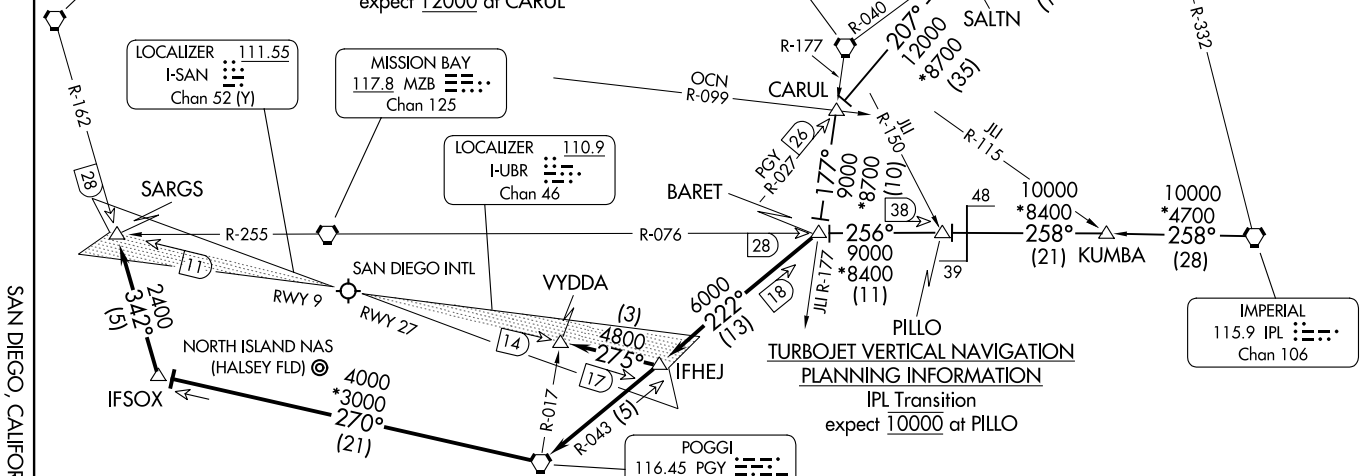
THERMAL  
116.2 TRM  
Chan 109

NEEDLES  
115.2 EED  
Chan 99

PARKER  
117.9 PKE  
Chan 126

IMPERIAL  
115.9 IPL  
Chan 106

POGGI  
116.45 PGY  
Chan 111(Y)



TURBOJET VERTICAL NAVIGATION

PLANNING INFORMATION

IPL Transition  
expect 10000 at PILLO

SAN DIEGO, CALIFORNIA

(CONTINUED ON FOLLOWING PAGE)

NOTE: Chart not to scale.

**BARET FIVE ARRIVAL**  
[BARET, BARET5] 23334

AL-373 (FAA)

SAN DIEGO, CALIFORNIA

ARRIVAL ROUTE DESCRIPTION

IMPERIAL TRANSITION (IPL.BARET5): From over IPL VORTAC on IPL R-258 and MZB R-076 to BARET INT. Thence . . . .

NEEDLES TRANSITION (EED.BARET5): From over EED VORTAC on EED R-208 to SHADI INT, then on JLI R-040 to SALTN INT, then on PGY R-027 to CARUL INT, then on JLI R-177 to BARET INT. Thence . . . .

PARKER TRANSITION (PKE.BARET5): From over PKE VORTAC on PKE R-227 to SHADI INT, then on JLI R-040 to SALTN INT, then on PGY R-027 to CARUL INT, then on JLI R-177 to BARET INT. Thence . . . .

TWENTYNINE PALMS TRANSITION (TNP.BARET5): From over TNP VORTAC on TNP R-179 to MOMAR INT, then on JLI R-040 to SALTN INT, then on PGY R-027 to CARUL INT, then on JLI R-177 to BARET INT. Thence . . . .

. . . .LANDING SAN RWY 9: From BARET INT on PGY R-043 to PGY VORTAC, then on PGY R-270 to IFSOX, then on OCN R-162 to SARGS INT.

Expect ILS Rwy 9 approach to SAN or LOC/DME-B to NZY.

. . . .LANDING SAN RWY 27 and NZY: From BARET INT on PGY R-043 to IFHEJ, then on I-UBR localizer to VYDDA INT. Expect LOC Rwy 27 approach to SAN or LOC/DME-A to NZY.

LOST COMMUNICATIONS: In the event of lost communications, North Island arrivals shall execute the TACAN Rwy 29 or TACAN Rwy 36.

SW-3, 26 DEC 2024 to 23 JAN 2025

SW-3, 26 DEC 2024 to 23 JAN 2025