

# CLSSY ONE DEPARTURE (RNAV)

AL-373 (FAA)

SAN DIEGO INTL (SAN)  
SAN DIEGO, CALIFORNIA

SW-3, 26 DEC 2024 to 23 JAN 2025

**DEPARTURE ROUTE DESCRIPTION**

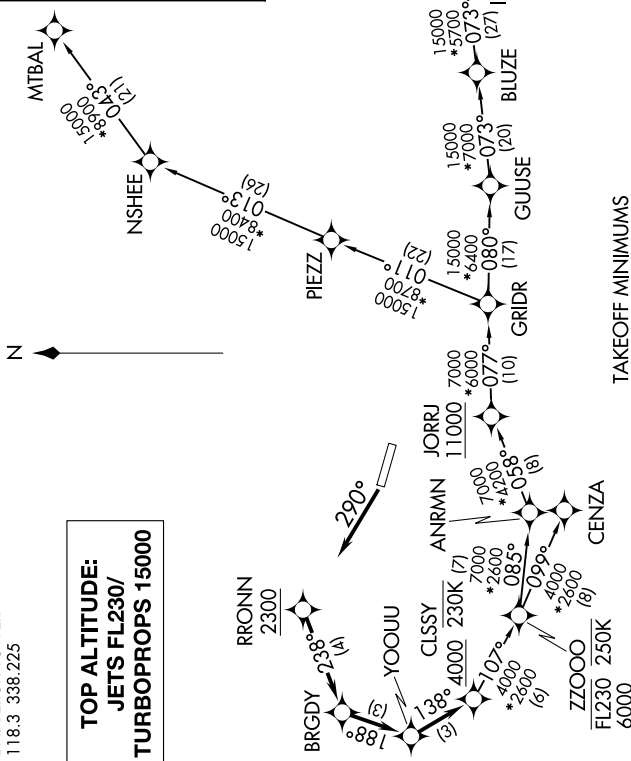
**TAKEOFF RUNWAY 27:** Climb on heading 290° or as assigned by ATC, for RADAR vectors to cross RRONN at or above 2300, then on depicted route to cross CLSSY at or above 4000 and at or below 230K, then on transition. Jets maintain FL230, turbo-props maintain 15000, expect filed altitude 10 minutes after departure.

CENZA TRANSITION (CLSSY1 .CENZA)  
GILA BEND TRANSITION (CLSSY1 .GBN)  
HOGGZ TRANSITION (CLSSY1 .HOGGZ)  
MTBAL TRANSITION (CLSSY1 .MTBAL)  
TGOLD TRANSITION (CLSSY1 .TGOLD)

RNAV 1 - DME/DME/IRU or GPS.  
 RADAR required.  
 For non-GPS equipped aircraft using TGOLD or GBN transitions, BLH DME must be operational.

SOCAL DEP CON  
119.6 363.1  
 D-ATIS  
134.8  
 CLINX DEL  
125.9  
 GND CON  
123.9  
 LINDBERGH TOWER  
118.3 338.225

**TOP ALTITUDE:  
 JETS FL230/  
 TURBOPROPS 15000**



**TAKEOFF MINIMUMS**  
 Rwy 27: Standard with minimum climb of 370'/NM to 4600.

NOTE: Jets/turbo-props only.  
 NOTE: HOGGZ Transition for PHX terminal area arrivals only.

NOTE: Chart not to scale.

# CLSSY ONE DEPARTURE (RNAV)