

# TACAN Y RWY 29

NORTH ISLAND NAS (HALSEY FIELD) (KNZY)

TACAN NZY Chan <b>117</b>	APCH CRS <b>299°</b>	Rwy Idg TDZE Arprt Elev <b>7501</b> <b>26</b> <b>26</b>
------------------------------	-------------------------	--

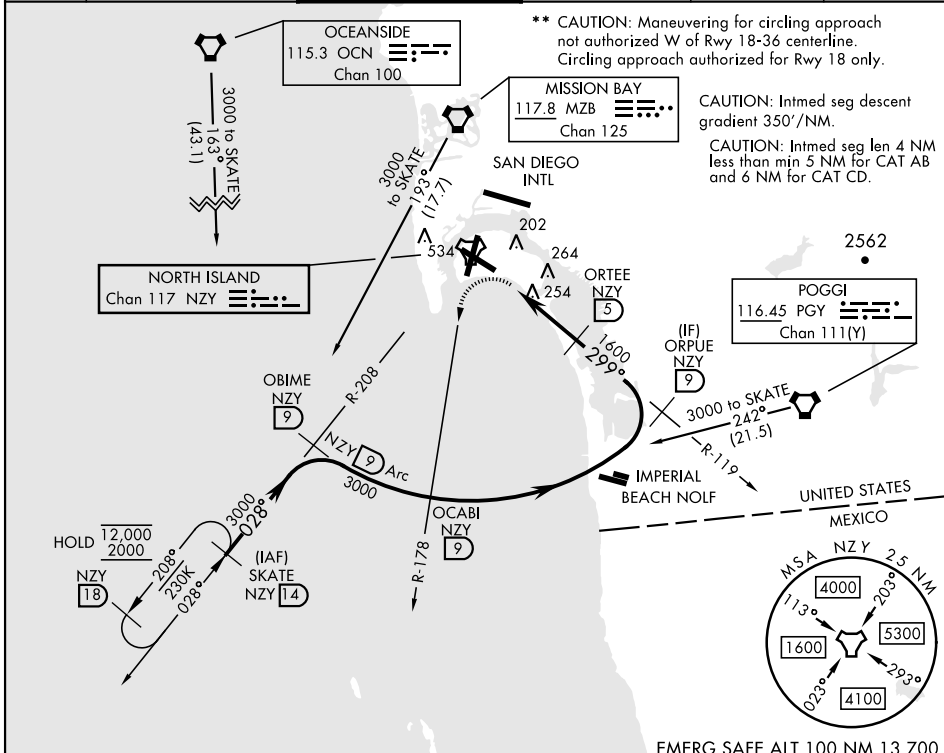
[USN]

▼ \* When ALS inop, increase CAT AB vis to 1 mile, CAT CD vis to 1½ mile.



MISSED APPROACH: Climbing left turn to 2000 via NZY TACAN R-178 to OCABI. Arc S on NZY 9 DME arc to OBIME, then via NZY R-208 to SKATE and hold.

ATIS ★ <b>317.8</b>	SOCAL APP CON <b>125.15 317.55</b>	TOWER ★ <b>135.1 336.4</b>	GND CON <b>118.0 360.675</b>	CLNC DEL <b>128.4 288.25</b>	PAR/ASR
------------------------	---------------------------------------	-------------------------------	---------------------------------	---------------------------------	---------



\*\* CAUTION: Maneuvering for circling approach not authorized W of Rwy 18-36 centerline. Circling approach authorized for Rwy 18 only.

CAUTION: Intmed seg descent gradient 350'/NM.

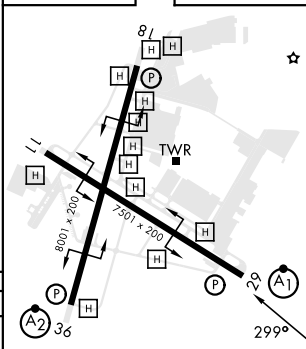
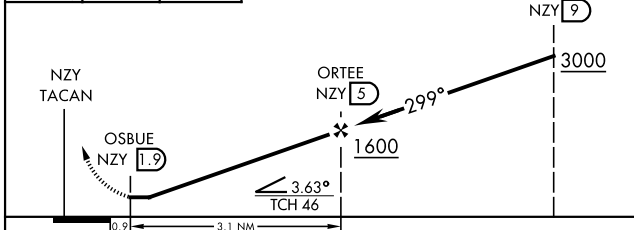
CAUTION: Intmed seg len 4 NM less than min 5 NM for CAT AB and 6 NM for CAT CD.

EMERG SAFE ALT 100 NM 13,700

2000 NZY R-178, OCABI NZY 9, Arc S NZY 9, OBIME

VGSI and descent angles not coincident (VGSI Angle 3.00/TCH 46).

ELEV 26	TDZE 26
---------	---------



CATEGORY	A	B	C	D
S-29 *	520-¾ 494 (500-¾)		520-1 494 (500-1)	
☉ CIRCLING **	620-1 594 (600-1)		NOT AUTHORIZED	

HIRL all rwys  
REIL Rwy 18, 29

# TACAN Y RWY 29

SW-3, 26 DEC 2024 to 23 JAN 2025

SW-3, 26 DEC 2024 to 23 JAN 2025