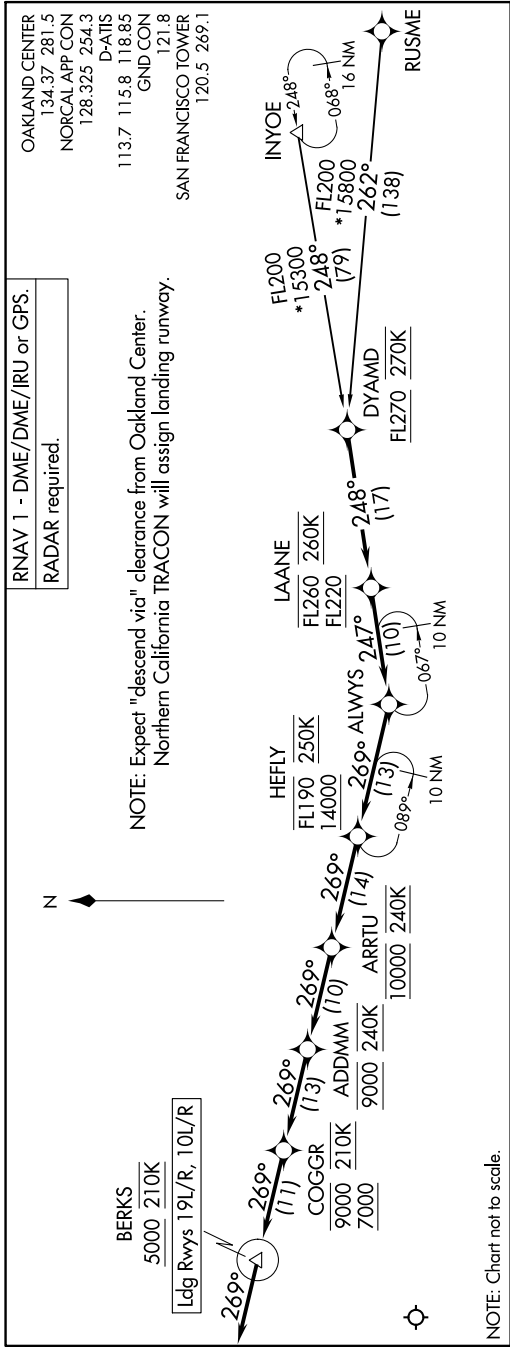


ALWAYS THREE ARRIVAL (RNAV)

AL-375 (FAA)

SAN FRANCISCO INTL (SFO)
SAN FRANCISCO, CALIFORNIA

SW-2, 26 DEC 2024 to 23 JAN 2025



ALWAYS THREE ARRIVAL (RNAV)
(DYAMD.ALWYS3) 11JUL24

ARRIVAL ROUTE DESCRIPTION

INYOE TRANSITION (INYOE.ALWYS3)

RUSME TRANSITION (RUSME.ALWYS3)

From DYAMD on track 248° to cross LAANE between FL220 and FL260K and at 260K, then on track 247° to ALWAYS.

LANDING RUNWAYS 10L/R: From ALWAYS on track 269° to cross HEFLY between 14000 and FL190 and at 250K, then on track 269° to cross ARRTU at 10000 and at 240K, then on track 269° to cross ADDMM at 9000 and at 240K, then on track 269° to cross COGGR between 7000 and 9000 and at 210K, then on track 269° to cross BERKS at or above 5000 and at 210K, then on track 269° . Expect RADAR vectors to final approach course.

LANDING RUNWAYS 19L/R: From ALWAYS on track 269° to cross HEFLY between 14000 and FL190 and at 250K, then on track 269° to cross ARRTU at 10000 and at 240K, then on track 269° to cross ADDMM at 9000 and at 240K, then on track 269° to cross COGGR between 7000 and 9000 and at 210K, then on track 269° to cross BERKS at or above 5000 and at 210K, then on track 269° . Expect ILS or RNAV (GPS) approach to Rwy 19L, or RADAR vectors to final approach course.

SW-2, 26 DEC 2024 to 23 JAN 2025

SAN FRANCISCO, CALIFORNIA
SAN FRANCISCO INTL (SFO)