

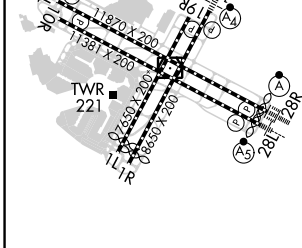
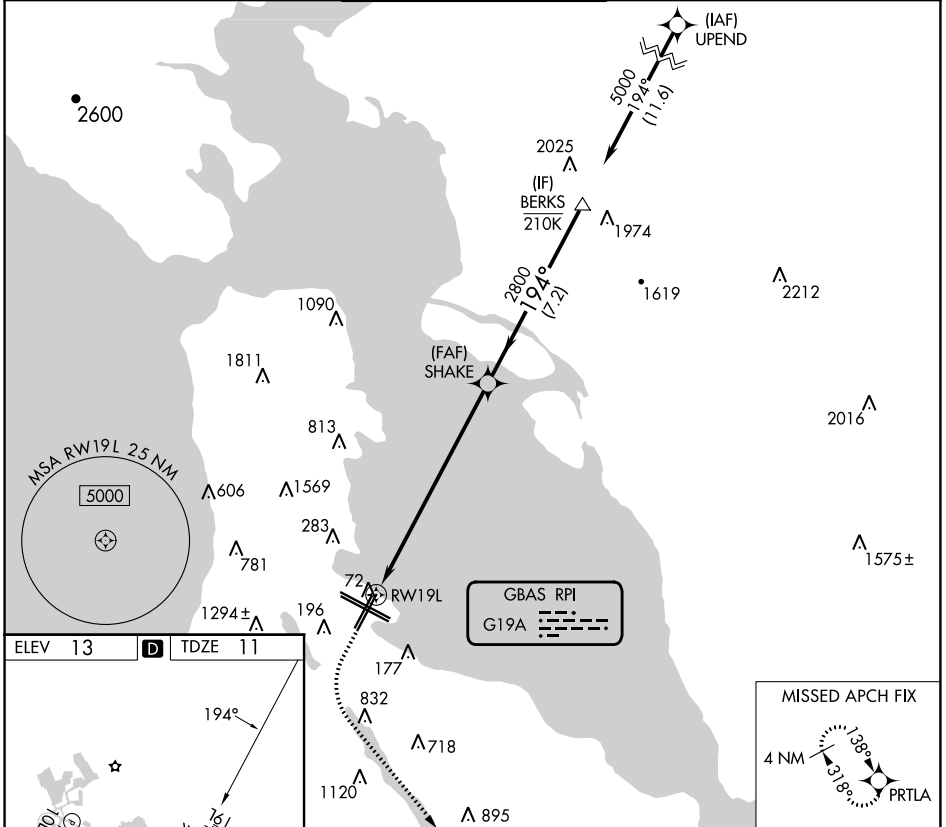
GBAS CH 21448 G19A	APP CRS 194°	Rwy Idg TDZE Apt Elev	8650 11 13
--	------------------------	-----------------------------	---------------------------------------

GLS RWY 19L

SAN FRANCISCO INTL (SFO)

RNP APCH-GPS.	MALSF	MISSED APPROACH: Climb to 920 then climbing left turn to 4000 direct PRTLA and hold. Missed approach requires minimum climb of 357 feet per NM to 2000.
Autopilot coupled approach NA below 293 feet. For inop ALS, increase GLS visibility to RVR 4500.		

D-ATIS 113.7 115.8 118.85	NORCAL APP CON 134.5 338.2	SAN FRANCISCO TOWER 120.5 269.1	GND CON 121.8	CLNC DEL 118.2	CPDLC
---	--------------------------------------	---	-------------------------	--------------------------	-------



920	4000	PRTLA	VGSI and GLS glidepath not coincident (VGSI Angle 3.00/TCH 71).	BERKS
SHAKE		2800	194°	5000
RWY 19L		2800		GP 3.00° TCH 55
8.6 NM		7.2 NM		

TDZ/CL Rwy 19L and 28R	REIL Rwy 1L, 1R and 10L	HIRL all Rwy		
CATEGORY	A	B	C	D
GLS DA	293/40		282 (300-¾)	