

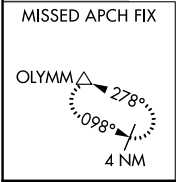
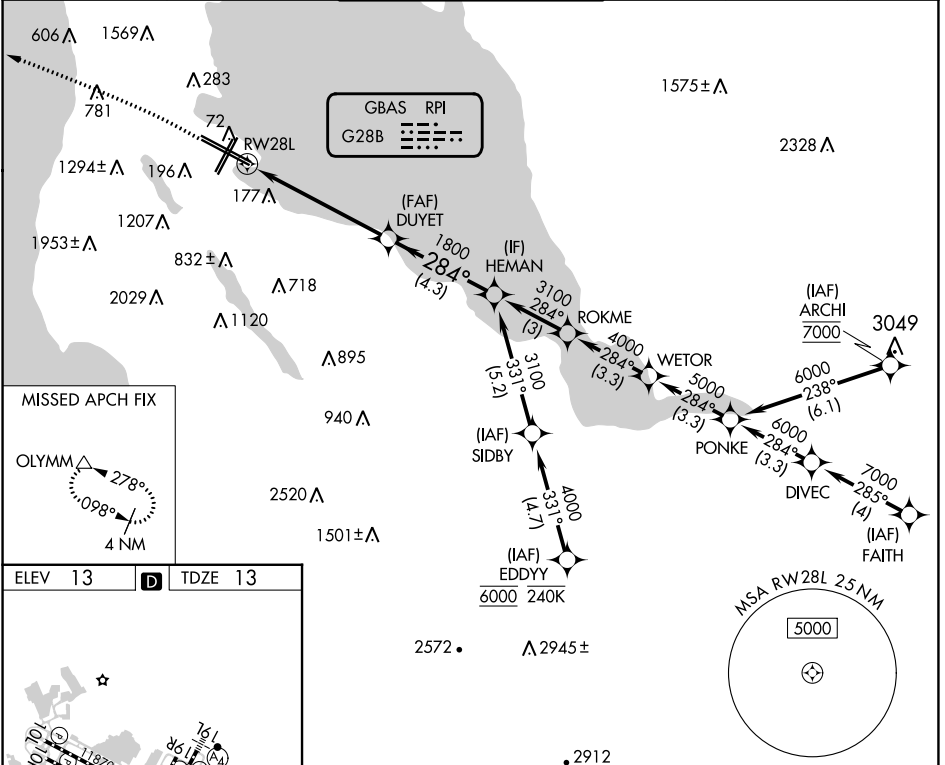
GBAS CH 21037 G28B	APP CRS 284°	Rwy Idg 10275 TDZE 13 Apt Elev 13
---------------------------------	------------------------	--

GLS RWY 28L

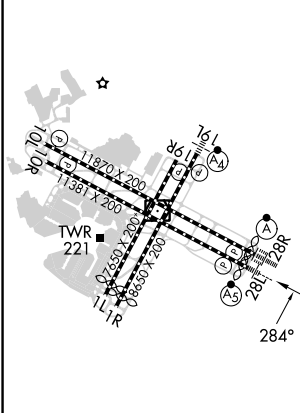
SAN FRANCISCO INTL (SFO)

RNP APCH-GPS.	<p>MALSRL</p>	<p>MISSED APPROACH: Climb to 1020 then climbing left turn to 4000 direct OLYMM and hold.</p> <p>*Missed approach requires minimum climb of 330 feet per NM to 1600; if unable to meet climb gradient, see RNAV (GPS) Rwy 28L.</p>
<p>Simultaneous approach authorized. Simultaneous operations require use of vertical guidance; maintain last assigned altitude until established on glidepath. Use of FD or AP required during simultaneous operations. Autopilot coupled during NA below 213.</p> <p>*RVR 1800 authorized with use of FD or AP or HUD to DA.</p>		

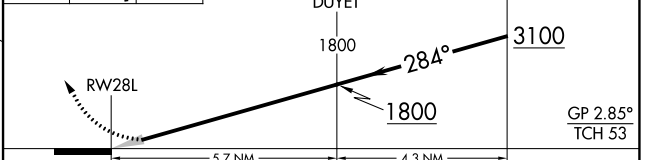
D-ATIS 113.7 115.8 118.85	NORCAL APP CON 134.5 338.2	SAN FRANCISCO TOWER 120.5 269.1	GND CON 121.8	CLNC DEL 118.2	CPDLC
---	--------------------------------------	---	-------------------------	--------------------------	-------



ELEV 13	D	TDZE 13
---------	----------	---------



1020	4000	OLYMM	<p>VGSI and GLS glidepath not coincident (VGSI Angle 2.85/TCH 67).</p>



CATEGORY	A	B	C	D
GLS DA*	213/24		200 (200-1/2)	

SW-2, 26 DEC 2024 to 23 JAN 2025

SW-2, 26 DEC 2024 to 23 JAN 2025