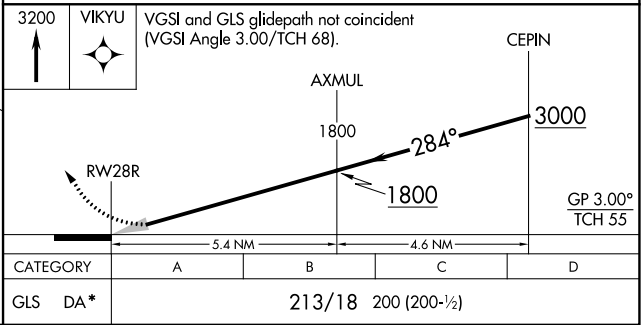
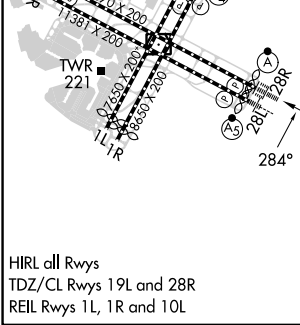
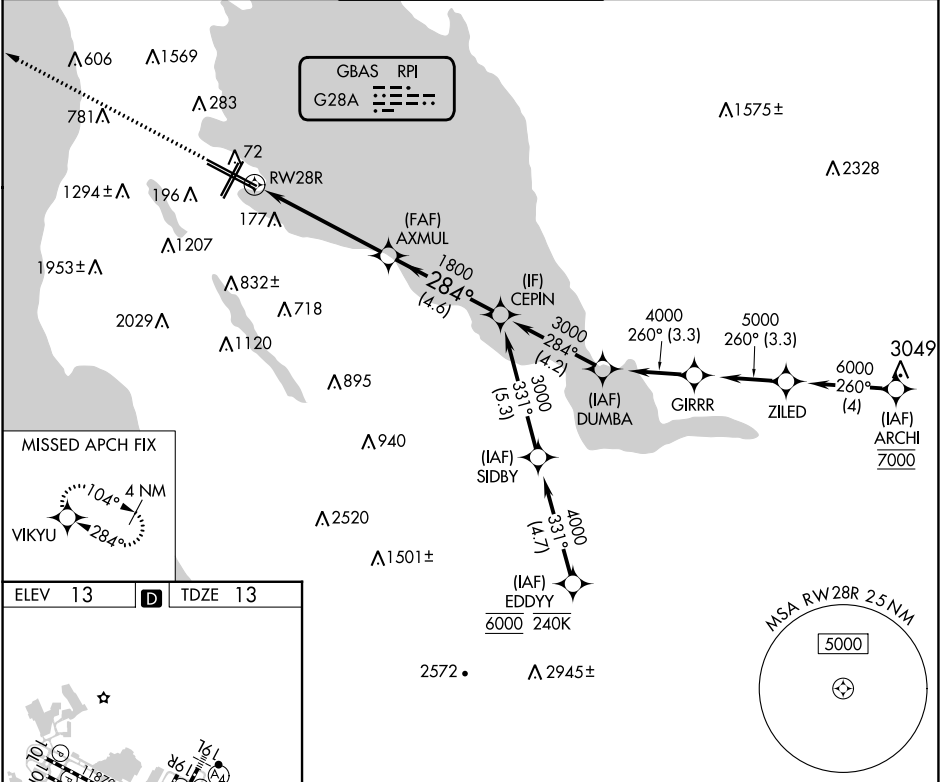


GBAS CH 20626 G28A	APP CRS 284°	Rwy Idg 11236 TDZE 13 Apt Elev 13
--	------------------------	--

GLS RWY 28R

SAN FRANCISCO INTL (SFO)

RNP APCH-GPS.		ALSIF-2 	MISSED APPROACH: Climb to 3200 direct VIKYU and hold. *Missed approach requires minimum climb of 350 feet per NM to 1900; if unable to meet climb gradient, see RNAV (GPS) Z RWY 28R.		
<p>Simultaneous approach authorized. Simultaneous operations require use of vertical guidance; maintain last assigned altitude until established on glidepath. Use of FD or AP required during simultaneous operations. Autopilot coupled approach NA below 213 feet.</p>					
D-ATIS 113.7 115.8 118.85	NORCAL APP CON 134.5 338.2	SAN FRANCISCO TOWER 120.5 269.1	GND CON 121.8	CLNC DEL 118.2	CPDLC



SW-2, 26 DEC 2024 to 23 JAN 2025

SW-2, 26 DEC 2024 to 23 JAN 2025