

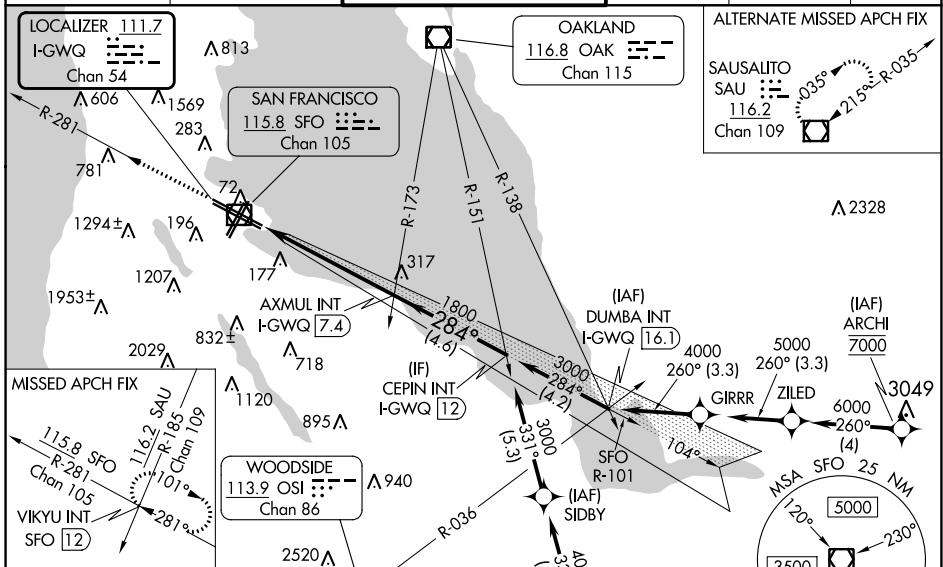
LOC/DME I-GWQ 111.7 Chan 54	APP CRS 284°	Rwy Idg 28R 28L	11236 10275
		TDZE 13	13
		Apt Elev 13	13

ILS or LOC RWY 28R

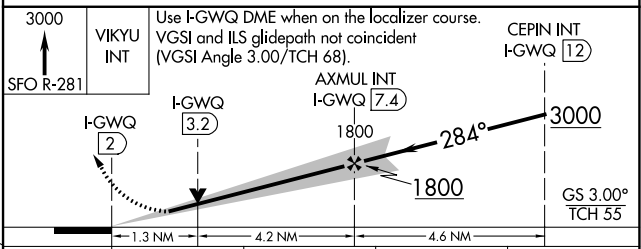
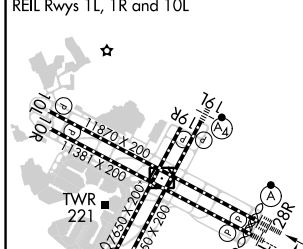
SAN FRANCISCO INTL (SFO)

<p>RNAV 1-GPS or RADAR required for procedure entry.</p> <p>⚠ Circling NA to Rwy 10L, 10R, 19L, and 19R. Circling Rwy 1L, 1R NA at night. LOC procedure NA during simultaneous operations. For inop ALS increase S-LOC 28R* Cat C/D visibility to 1 3/8 SM. Simultaneous approach authorized. Simultaneous operations require use of vertical guidance; maintain last assigned altitude until established on glideslope.</p>	<p>ALSIF-2 Rwy 28R</p>	<p>MALSR Rwy 28L</p>	<p>MISSED APPROACH: Climb to 3000 on SFO VOR/DME R-281 to VIKYU INT/SFO 12 DME and hold. *Missed approach requires minimum climb of 350 feet per NM to 1900; if unable to meet climb gradient, see ILS or LOC RWY 28L.</p>
---	----------------------------	--------------------------	--

D-ATIS 113.7 115.8 118.85	NORCAL APP CON 134.5 338.2	SAN FRANCISCO TOWER 120.5 269.1	GND CON 121.8	CLNC DEL 118.2	CPDLC
---	--------------------------------------	---	-------------------------	--------------------------	-------



ELEV 13	TDZE 28R 13
HIRL all Rwys	TDZE 28L 13
TDZ/CL Rwy 19L and 28R	
REIL Rwy 1L, 1R and 10L	



FAF to MAP 5.4 NM					
Knots	60	90	120	150	180
Min:Sec	5:24	3:36	2:42	2:10	1:48
ⓐ CIRCLING	740-1 727 (800-1)	960-1 1/4 947 (1000-1 1/4)	1560-3 1547 (1600-3)	NA	

SW-2, 26 DEC 2024 to 23 JAN 2025

SW-2, 26 DEC 2024 to 23 JAN 2025