

WAAS CH 93946 W10A	APP CRS 107°	Rwy Idg 11193 TDZE 7 Apt Elev 13
--	------------------------	---

RNAV (GPS) RWY 10L

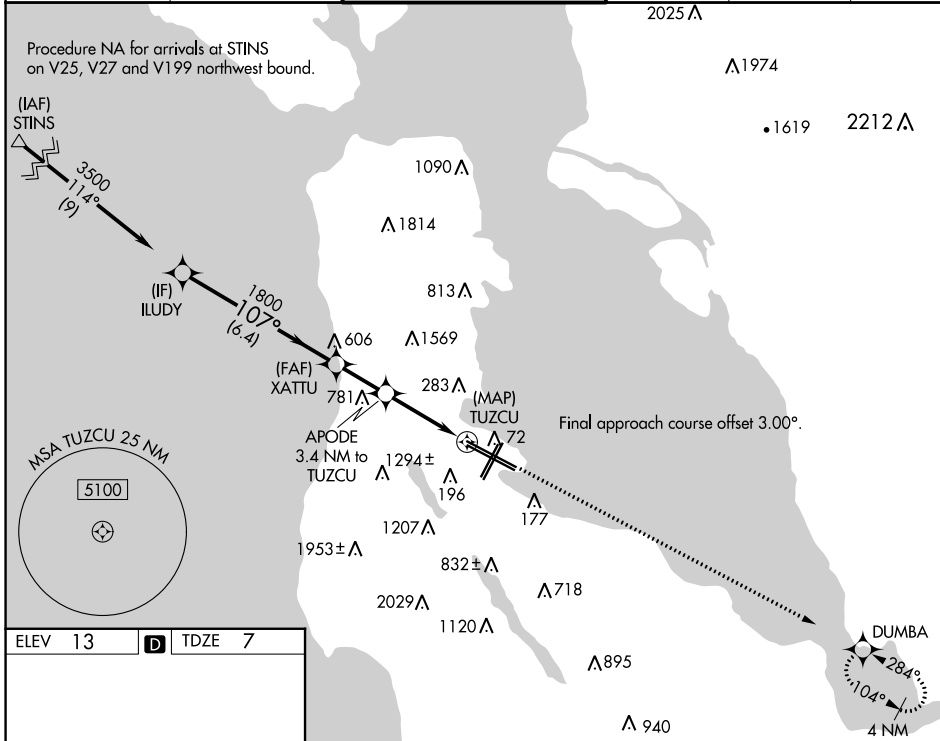
SAN FRANCISCO INTL (SFO)

RNP APCH - GPS.

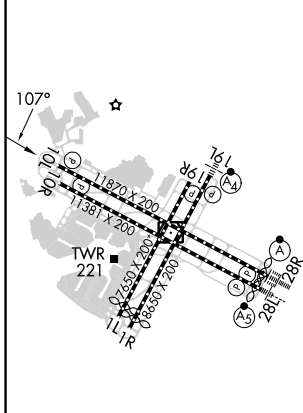
▼ For uncompensated Baro-VNAV systems, LNAV/VNAV NA below 4°C or above 54°C. Rwy 10L helicopter visibility reduction below RVR 4000 NA.

▲ MISSED APPROACH: Climb to 500, then climb to 3000 direct DUMBA and hold.

D-ATIS 113.7 115.8 118.85	NORCAL APP CON 134.5 338.2	SAN FRANCISCO TOWER 120.5 269.1	GND CON 121.8	CLNC DEL 118.2	CPDLC
---	--------------------------------------	---	-------------------------	--------------------------	-------



ELEV 13	D	TDZE 7
---------	----------	--------



TDZ/CL Rws 19L and 28R
REIL Rws 1L, 1R, and 10L
HIRL all Rws

ILUDY	VGSi and RNAV glidepath not coincident (VGSi Angle 3.00/TCH 80).			500	3000	DUMBA
3500	XATTU	APODE	TUZCU	↑	↑	✧
1800	1800	3.4 NM to TUZCU	1140			
GP 3.00°	6.4 NM	2.1 NM	3.4 NM			
TCH 55						
CATEGORY	A	B	C	D		
LPV DA	257/40		250 (300-3/4)			
LNAV/VNAV DA	494-1 3/8		487 (500-1 3/8)			
LNAV MDA	1080-1 1/4	1080-1 1/2	1080-3	1073 (1100-3)		
	1073 (1100-1 1/4)	1073 (1100-1 1/2)				

SW-2, 26 DEC 2024 to 23 JAN 2025

SW-2, 26 DEC 2024 to 23 JAN 2025