

APP CRS	Rwy Idg	10704
104°	TDZE	10
	Apt Elev	13

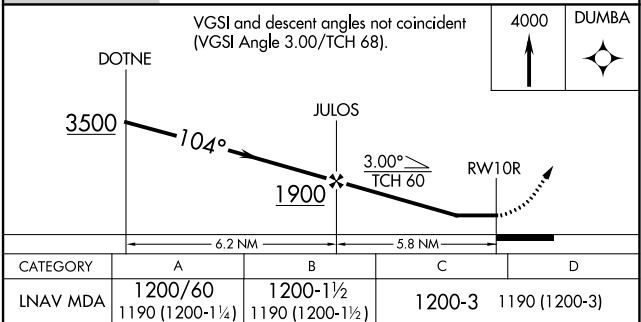
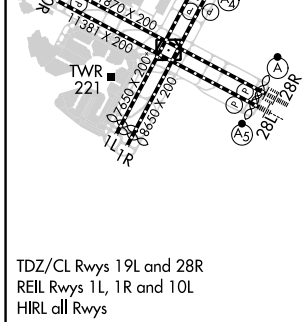
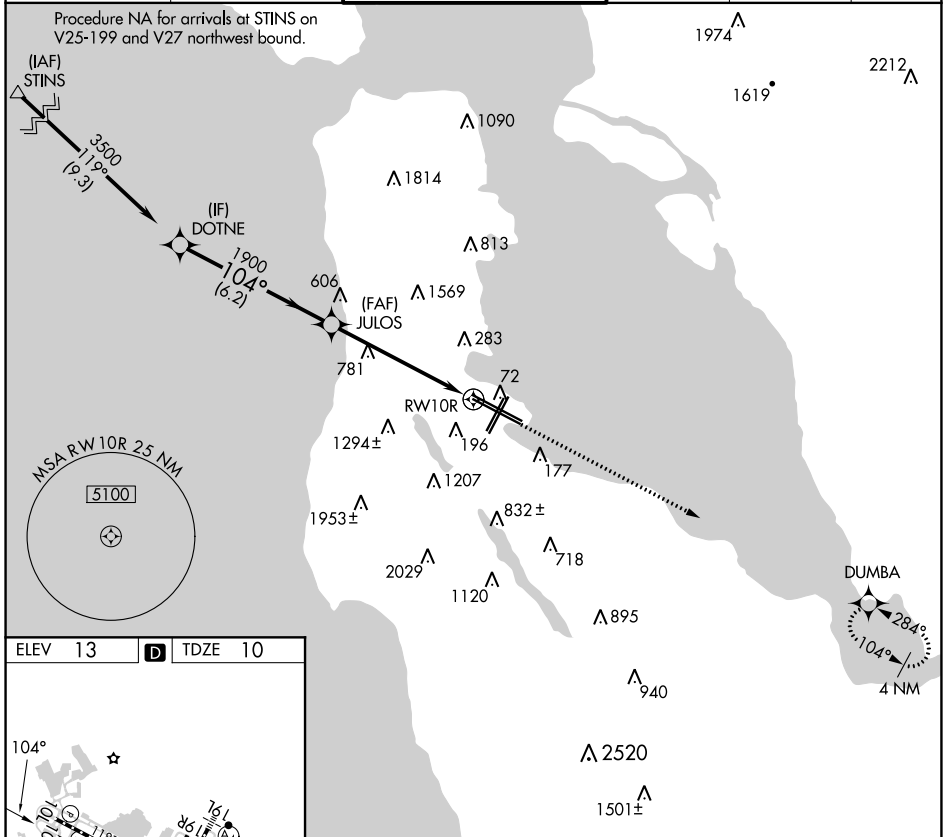
RNAV (GPS) Y RWY 10R

SAN FRANCISCO INTL (SFO)

⚠ DME/DME RNP-0.3 NA. When VGSI inop, procedure NA at night. Helicopter visibility reduction below RVR 5000 NA.

MISSED APPROACH: Climb to 4000 direct DUMBA and hold.

D-ATIS 113.7 115.8 118.85	NORCAL APP CON 134.5 338.2	SAN FRANCISCO TOWER 120.5 269.1	GND CON 121.8	CLNC DEL 118.2	CPDLC
---	--------------------------------------	---	-------------------------	--------------------------	-------



SW-2, 26 DEC 2024 to 23 JAN 2025

SW-2, 26 DEC 2024 to 23 JAN 2025