

WAAS CH 57945 W19D	APP CRS 194°	Rwy Idg TDZE Apt Elev	7650 11 13
--	------------------------	-----------------------------	---------------------------------------

RNAV (GPS) Z RWY 19R

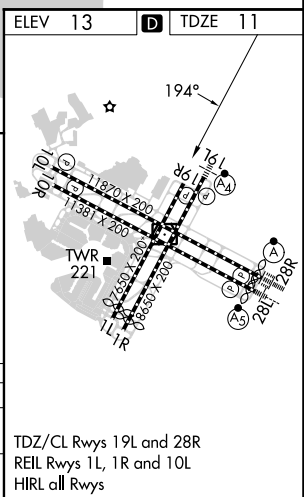
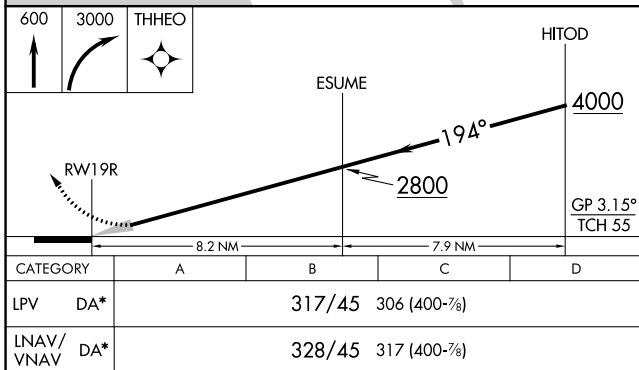
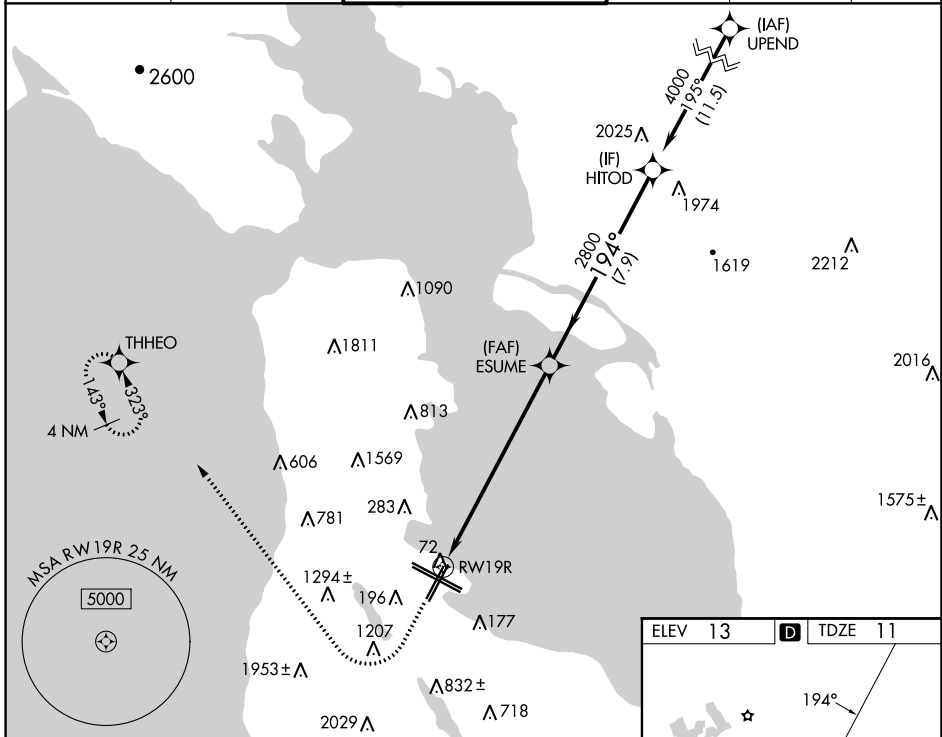
SAN FRANCISCO INTL (SFO)

RNP APCH - GPS.

Simultaneous approach authorized. Simultaneous operations require use of vertical guidance; maintain last assigned altitude until established on glidepath. For uncompensated Baro-VNAV systems, LNAV/VNAV NA below 4°C or above 54°C. Simultaneous approach NA below 12°C (52°F).

MISSED APPROACH: Climb to 600 then climbing right turn to 3000 direct THHEO and hold.
 *Missed approach requires minimum climb of 395 feet per NM to 2100; if unable to meet climb gradient, see RNAV (GPS) Y RWY 19R.

D-ATIS 113.7 115.8 118.85	NORCAL APP CON 134.5 338.2	SAN FRANCISCO TOWER 120.5 269.1	GND CON 121.8	CLNC DEL 118.2	CPDLC
---	--------------------------------------	---	-------------------------	--------------------------	-------



SW-2, 26 DEC 2024 to 23 JAN 2025

SW-2, 26 DEC 2024 to 23 JAN 2025