

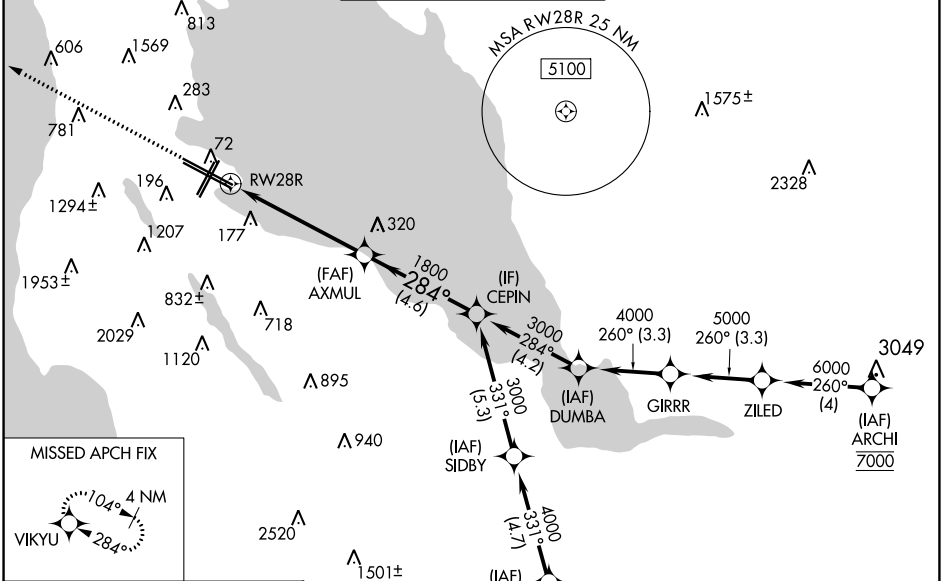
WAAS CH 48803 W28A	APP CRS 284°	Rwy Idg TDZE Apt Elev	11236 13 13
----------------------------------------	------------------------	-----------------------------	----------------------------------------

RNAV (GPS) Z RWY 28R

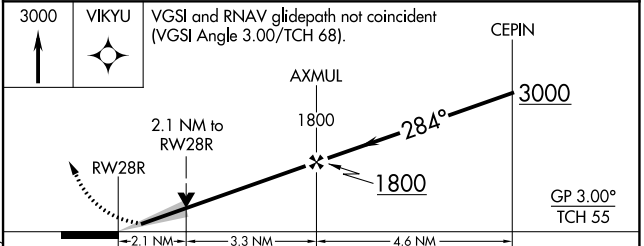
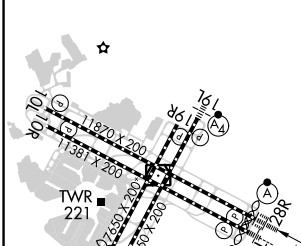
SAN FRANCISCO INTL (SFO)

RNP APCH - GPS.	ALSF-2	MISSED APPROACH: Climb to 3000 direct VIKYU and hold. *Missed approach requires minimum climb of 350 feet per NM to 1900; if unable to meet climb gradient, see RNAV (GPS) RWY 28L.
<p>⚠ Circling NA to Rwy's 10L, 10R, 19L, and 19R. Circling Rwy 1L, 1R NA at night. For uncompensated Baro-VNAV systems, LNAV/VNAV NA below 4°C or above 54°C. For inop ALS, increase LNAV/VNAV all Cats visibility to 1½ SM, increase LNAV Cat C/D visibility to 2 SM.</p>		

D-ATIS 113.7 115.8 118.85	NORCAL APP CON 134.5 338.2	SAN FRANCISCO TOWER 120.5 269.1	GND CON 121.8	CLNC DEL 118.2	CPDLC
-----------------------------------------------	--------------------------------------	-------------------------------------------	-------------------------	--------------------------	-------



ELEV 13	D	TDZE 13
---------	----------	---------



CATEGORY	A	B	C	D
LPV DA*		213/18	200 (200-½)	
LNAV/VNAV DA		642-1⅓	629 (700-1⅓)	
LNAV MDA	760/24 747 (800-½)	760/40 747 (800-¾)	760-1¾	747 (800-1¾)
C CIRCLING	760-1 747 (800-1)	1020-1½ 1007 (1100-1½)	1640-3 1627 (1700-3)	NA

TDZ/CL Rwy's 19L and 28R
REIL Rwy's 1L, 1R and 10L
HIRL all Rwy's

SW-2, 26 DEC 2024 to 23 JAN 2025

SW-2, 26 DEC 2024 to 23 JAN 2025