

(SFO4.SFO) 23334

# SAN FRANCISCO FOUR DEPARTURE

AL-375 (FAA)

SAN FRANCISCO INTL (SFO)  
SAN FRANCISCO, CALIFORNIA

**TOP ALTITUDE:  
ASSIGNED BY ATC**

RED BLUFF  
115.7 RBL :  
Chan 104

D-ATIS  
113.7 115.8 118.85  
CPDLC  
GND CON  
121.8  
SAN FRANCISCO TOWER  
120.5 269.1  
NORCAL DEP CON  
120.9 323.2

### TAKEOFF MINIMUMS

Rwys 1L/R: Standard.

Rwys 28L/R: Standard with a minimum climb of 351' per NM to 1300.

NOTE: RADAR required.

NOTE: Rwys 1L/R: DME required.

SACRAMENTO  
115.2 SAC :  
Chan 99

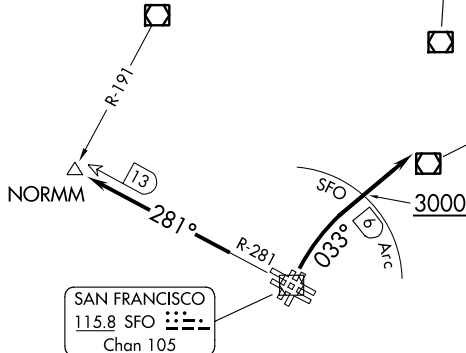
SAUSALITO  
116.2 SAU :  
Chan 109

CONCORD  
117.0 CCR :  
Chan 117

LINDEN  
114.8 LIN :  
Chan 95

OAKLAND  
116.8 OAK :  
Chan 115

SAN FRANCISCO  
115.8 SFO :  
Chan 105



NOTE: Chart not to scale.

### DEPARTURE ROUTE DESCRIPTION

**TAKEOFF RUNWAYS 1L/R:** Climbing right turn heading 033° or ATC assigned heading to cross SFO 6 DME at or above 3000 for RADAR vectors to assigned route/fix. Expect further clearance to filed altitude 10 minutes after departure.

**TAKEOFF RUNWAYS 28L/R:** Climb on SFO VOR/DME R-281 to NORMM INT/SFO 13 DME; then expect RADAR vectors to assigned route/fix. Expect further clearance to filed altitude 10 minutes after departure.

### LOST COMMUNICATIONS:

If not in contact with departure control after reaching 3000, continue climb to filed altitude and proceed direct to assigned route/fix.

**SAN FRANCISCO FOUR DEPARTURE**  
(SFO4.SFO) 15SEP16

SAN FRANCISCO, CALIFORNIA  
SAN FRANCISCO INTL (SFO)

SW-2, 26 DEC 2024 to 23 JAN 2025

SW-2, 26 DEC 2024 to 23 JAN 2025