

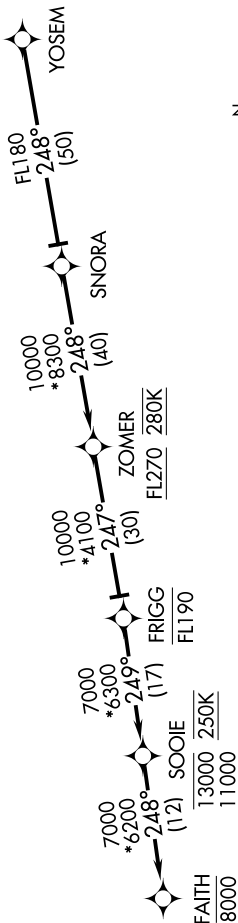
OAKLAND CENTER  
134.375 281.5  
NORCAL APP CON  
128.325 254.3  
D-ATIS  
113.7 115.8 118.85  
SAN FRANCISCO TOWER  
120.5 269.1  
GND CON  
121.8



ARRIVAL ROUTE DESCRIPTION

From YOSEM on track 248° to SNORA, then on track 248° to cross ZOMER at/above FL270 and at 280K.

LANDING RUNWAYS 28L/R: From ZOMER on track 247° to cross FRIGG at/below FL190, then on track 249° to cross SOOIE between 11000 and 13000 and at 250K, then on track 248° to cross FAITH at 8000. Expect assigned instrument approach procedure, or expect RADAR vectors to final.



- NOTE: RADAR required.
- NOTE: RNAV 1.
- NOTE: DME/DME/IRU or GPS required.
- NOTE: YOSEM3 STAR ATC assigned only.
- NOTE: Chart not to scale.